

NEW MANNER OF DINING

Dining with a Mask

Wear a **mask** whenever you **talk!**



Eat
silently.



Put on
the mask
when you talk.



Cover your mouth
with a handkerchief, etc.
if a mask is unavailable.

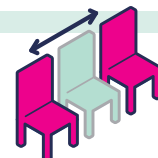
- ▶ **Change your mask** with a **new one** before dining.
- ▶ **Take one strap off the ear** when you eat and drink.
- ▶ **Wear a mask** when you have a conversation.

M**M**ask wearing in an appropriate manner**A****A**lcoholic disinfection**S****S**creening using acrylic boards, etc.
and meeting in a short time

Short time contact!

**K****K**eepest distancing and ventilating

Ventilation is especially important!

Comprehensive Policy Division, Policy Department,
Policy Bureau, Kanagawa Prefectural Government045-210-3061 9:00am to 5:00pm
on weekdaysSimulation of anti infection measures
Video of "Visualized droplets while dining" ▶

Kanagawa COVID 19 Dining with a mask search

<https://www.youtube.com/watch?v=GqA23quWgWg>