



In Pursuit of Conservation and Restoration of Kanagawa's Water Source Environment

Water resources, that support our lives, have been mostly secured by a series of development projects starting from the Sagami Dam Construction Plan in 1938 to the completion of Miyagase Dam in 2001. However, if we look at the water source environment, we find such problems as deterioration of forests and pollution of water by domestic wastewater.

Since 2000, Kanagawa Prefectural Government discussed and exchanged opinions on these issues many times with the prefectural citizens and municipalities. The Government also deliberated the issues at the Prefectural Assembly. Based on these discussion, the Kanagawa Prefecture has drawn up the "Kanagawa Basic Policies for Conservation and Restoration of Water Source Environment", which identifies the policies over the next 20 years. It has also made the "Kanagawa Five-Year Action Plan for Conservation and Restoration of Water Source Environment", which explains the programs to be carried out in the first 5 years of the specified 20 years.



Deterioration of the man-made forest

To secure finances of the programs in the Five-Year Action Plan, the prefectural tax ordinance was amended; the Kanagawa Prefecture has implemented the programs of the Plan from FY 2007, and introduced the increased tax rates on the prefectural inhabitant tax on individuals as the financial resources.

Kanagawa Basic Policies for Conservation and Restoration of Water Source Environment

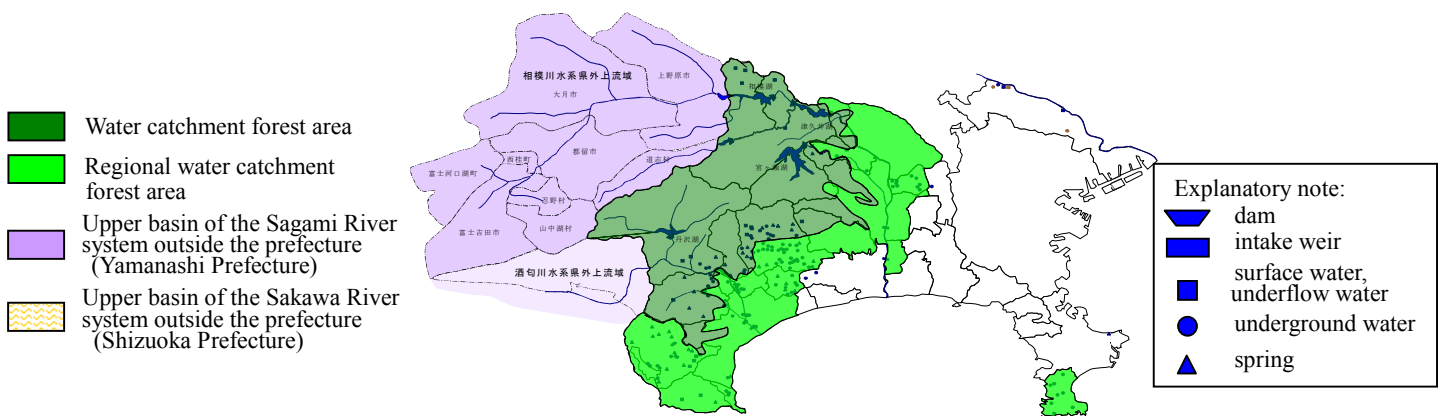
To guarantee stable and secure supply of quality water to sustain people's life for the future, it is necessary to continue consistent and comprehensive efforts to conserve and restore the water catchment forests and clean water sources.

Thus, the "Kanagawa Basic Policies for Conservation and Restoration of Water Source Environment" identifies the basic ideas of comprehensive and systematic policies to promote conservation and restoration of the water source environment over the next 20 years

| | |
|--------------------|--|
| Purpose | To secure the stable supply of quality water |
| Basic Idea | To conserve and restore the functions of the sound and natural water cycle in the watersheds from upstream to downstream covering surface and ground-water veins, and the whole area related in terms of water utilization |
| Guiding Principles | <ol style="list-style-type: none"> 1. The policies shall be promoted in a comprehensive manner. 2. The policies shall be developed based on the public will. 3. The policies shall be promoted based on the adaptive management.* |
| Target Areas | All the catchment basins surrounding the intake weirs of the surface and ground waters, as well as the upper stream dam areas both in and outside of the prefecture. |

*Note: "Adaptive management" is the management method to monitor the process of implementing the plan, analyze and evaluate the results, and review the plan based on the latest scientific knowledge.

Areas to be Covered by the Conservation and Restoration Policies for Water Source Environment



Kanagawa Five-Year Action Plan for Conservation and Restoration of Water Source Environment

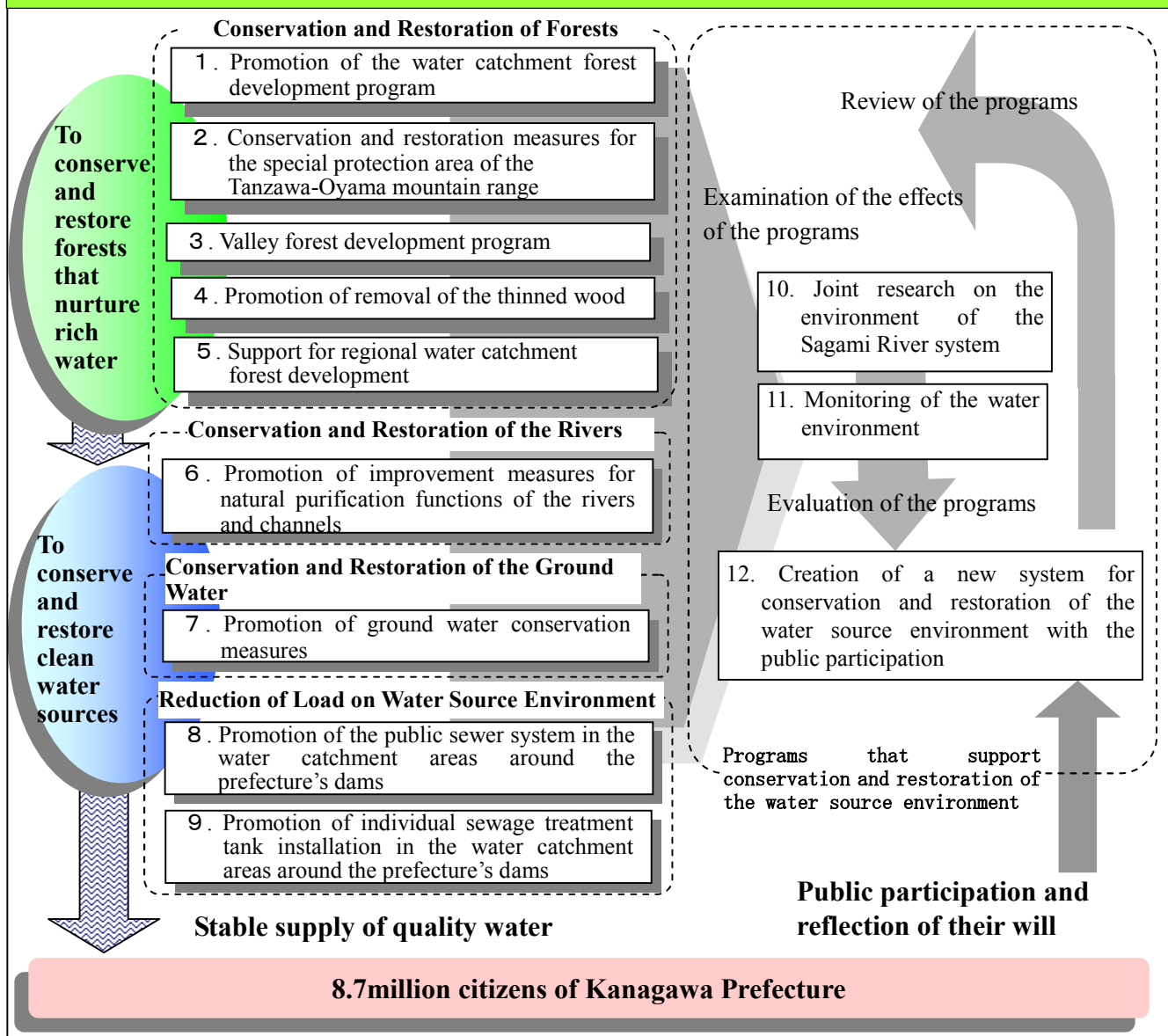
To promote conservation and restoration of the water source environment effectively and steadily according to the Basic Policies, the Five-Year Action Plan defines programs to be implemented in the first five years of the specified 20 years.

| | |
|--|---|
| Time Frame of the Action Plan | From FY 2007 through FY 2011 |
| Program Covered by the Action Plan | <ul style="list-style-type: none"> ○ Programs expected to have direct effects on conservation and restoration of the water source environment, and which are to be implemented in the water source conservation areas within the prefecture. ○ Programs designed to build a new system to promote conservation and restoration of the water source environment. |
| Number of Programs and Newly Required Expenses | 12 programs Total expenses over the 5 yrs: About ¥19 bil. Average annual expenses: About ¥3.8 bil. |



Properly managed man-made forest

12 Programs of the Five-Year Action Plan



Outline of the 12 Programs in the Five-Year Action Plan

Numbers in () show the budget to be required over the five years. (in million yen)

1. Promotion of water catchment forest development program

Further promote public management and support for privately-owned forests in the water catchment areas, and develop the forests as those with high public functions such as water nurturing.

(8,393)

2. Conservation and restoration measures for the special protection area of the Tanzawa-Oyama mountain range

Implement measures to prevent soil erosion, and conduct the conservation and restoration research on beech forests and the collaborative project with the public for tree trunk protection.

(796)

3. Valley forest development program

Develop forests in the upper-stream areas so that they will be able to serve their public functions, such as prevention of soil erosion, purification of water and preservation of biodiversity.

(200)

4. Promotion of removal of the thinned wood

Support collection and removal of the thinned wood to promote development of forests through effective use of their resources.

(409)

5. Support for regional water catchment forest development

Encourage the municipal governments' programs to secure and develop water catchment forests, and promote thinning of privately-owned old artificial forests to conserve regional water sources.

(949)

6. Promotion of improvement measures for natural purification function of the rivers and channels

Promote the municipal governments' programs to develop waterfront environment and purify water to create good water source environment.

(1,122)

7. Promotion of groundwater conservation measures

Promote the municipal governments' measures to nurture groundwater and maintain water quality in the regions where groundwater is the major source of tap water.

(1,165)

8. Promotion of the public sewer system in the water catchment areas around the prefecture's dams

Support the municipal governments in developing public sewer system to improve the domestic waste-water treatment rate in the catchment areas around the prefecture's dams.

(4,270)

9. Promotion of individual sewage treatment tank installation in the water catchment areas around the prefecture's dams

Support the municipal governments in installing individual sewage treatment tanks (advanced treatment type) to improve domestic waste-water treatment rate in the catchment areas around the prefecture's dams.

(646)

10. Joint research on the environment of the Sagami River system

Conduct environmental research on the condition of the forests in the upper basins of the Sagami River system outside the prefecture, and on the water-pollutant load in the entire Katsura River and Sagami River system.

(98)

11. Monitoring of the water environment

Monitor the condition of forests, rivers and groundwater to evaluate the effects of the programs, and provide information concerning the water source environment by white paper, etc.

(848)

12. Creation of a new system for conservation and restoration of the water source environment with the public participation

Reflect the prefectural citizens' will to support conservation and restoration of the water source environment, and create a scheme in which the citizens' can participate in the process of planning of the measures and implementation of the programs.

(192)

Tax Rates for the Prefectural Inhabitant Tax on Individuals Increased from FY2007 to Fund the Programs

In order to carry out the programs for conservation and restoration of the water source environment in a continuous and steady manner, it is necessary to secure stable financial sources for this purpose, besides the unstable general revenue that is easily affected by economic trends.

Therefore, the Kanagawa Prefectural Government decided to increase the tax rates of the prefectural inhabitant tax on individuals, which consists of the per capita rates and those based on the income levels, so that the expenses of about 3.8 billion yen a year, which is newly needed to promote the 12 special programs in the “Five-Year Action Plan”, are widely and fairly shouldered by the prefectural citizens that use water.

The revenue from the increase in the tax is used to implement the programs for conservation and restoration of the water source environment. In order to clarify the use of this tax revenue, we also established a special account (Kanagawa Prefectural Government Account for Conservation and Restoration of Water Source Environment Programs) and a fund (Kanagawa Prefectural Government Fund for Conservation and Restoration of Water Source Environment) within this account.

- **Time of implementation of tax rate increase:** For 5 years from April 1, 2007 (for taxes of FY2007 - FY2011)
- **Tax rates**

| Breakdown of the prefectural inhabitant tax on individuals | Original amount/ratio of the tax from FY'07 (A) | Amount/ratio added for conservation and restoration of water source environment (B) | Total (A+B) |
|--|---|---|-----------------|
| Per capita rates | ¥1,000 per year | ¥300 per year | ¥1,300 per year |
| Ratio based on income levels | 4% (uniform ratio) | 0.025% | 4.025% |

- **Expected tax revenue for the programs:** About ¥3.8 billion per year (about ¥19 billion for 5 years)
- **Average amount of tax increase to be shouldered by person:** About ¥950 per year (¥79 per month)
- **Amount of the tax increase based on annual income (trial calculation)**

| Annual income | Original annual tax from FY'07 (A) | Newly increased rates for conservation and restoration of water source environment | | Total per year (A+B) | |
|---------------|------------------------------------|--|---------------------|----------------------|---------|
| | | per year (per month) (B) | Rates by per capita | | |
| ¥3 mil. | ¥4,600 | ¥300 (¥25) | ¥300 | ¥4,900 | |
| 5 | 55,200 | 600 (50) | | ¥0 | 55,800 |
| 7 | 118,400 | 1,000 (83) | | 300 | 119,400 |
| 9 | 182,400 | 1,400 (117) | | 700 | 183,800 |
| 11 | 253,200 | 1,800 (150) | | 1,100 | 255,000 |
| 13 | 326,000 | 2,300 (192) | | 1,500 | 328,300 |
| | | | | 2,000 | 328,300 |

Note 1. The above calculation is based on the taxable income which is obtained after various deductions from the annual income. The number in () is monthly amount.

2. The above calculation is based on the family model of a couple with 2 children (one of them is a specified dependant aged 16 to 22), under the condition that the husband is the only income earner (all earned salary) in the family.

◇ Information on the Plan and Programs

Information on the “Kanagawa Basic Policies for Conservation and Restoration of Water Source Environment” and the “Kanagawa Five-Year Action Plan for Conservation and Restoration of Water Source Environment”, etc., is available at the Public Information sections and the tax system reform information counters in the prefectural government office and major branch offices.

◇ Gathering to discuss conservation and restoration of the water source environment in Kanagawa

The staff in charge hold a gathering at a requested venue to explain the measures for conservation and restoration of the water source environment and the tax reform that supports these measures, and listen to your opinions. If you are interested in, contact the Planning and Coordination Section, Land and Water Resources Division.

◇ Related web pages

- “Think about the water source environment in Kanagawa”
<http://www.pref.kanagawa.jp/osirase/01/0104/suigenkankyo/index.htm>
- “Why is Kanagawa Prefecture promoting tax system reform?”
<http://www.pref.kanagawa.jp/kenzei/kaikaku/kaikakutop.htm>

◇ Any opinions and questions are welcome!

1 Nihon-odori, Naka-ku, Yokohama City, 231-8588
 Planning and Coordination Section Tel : 045(210)4352
 Water Source Environment Conservation Division Fax: 045(210)8855
 (Inquiries about the measures)
 Tax System Planning Division Tel : 045(210)7490 (Tax System Reform Hotline)
 (Inquiries about the tax system) Fax: 045(210)8806