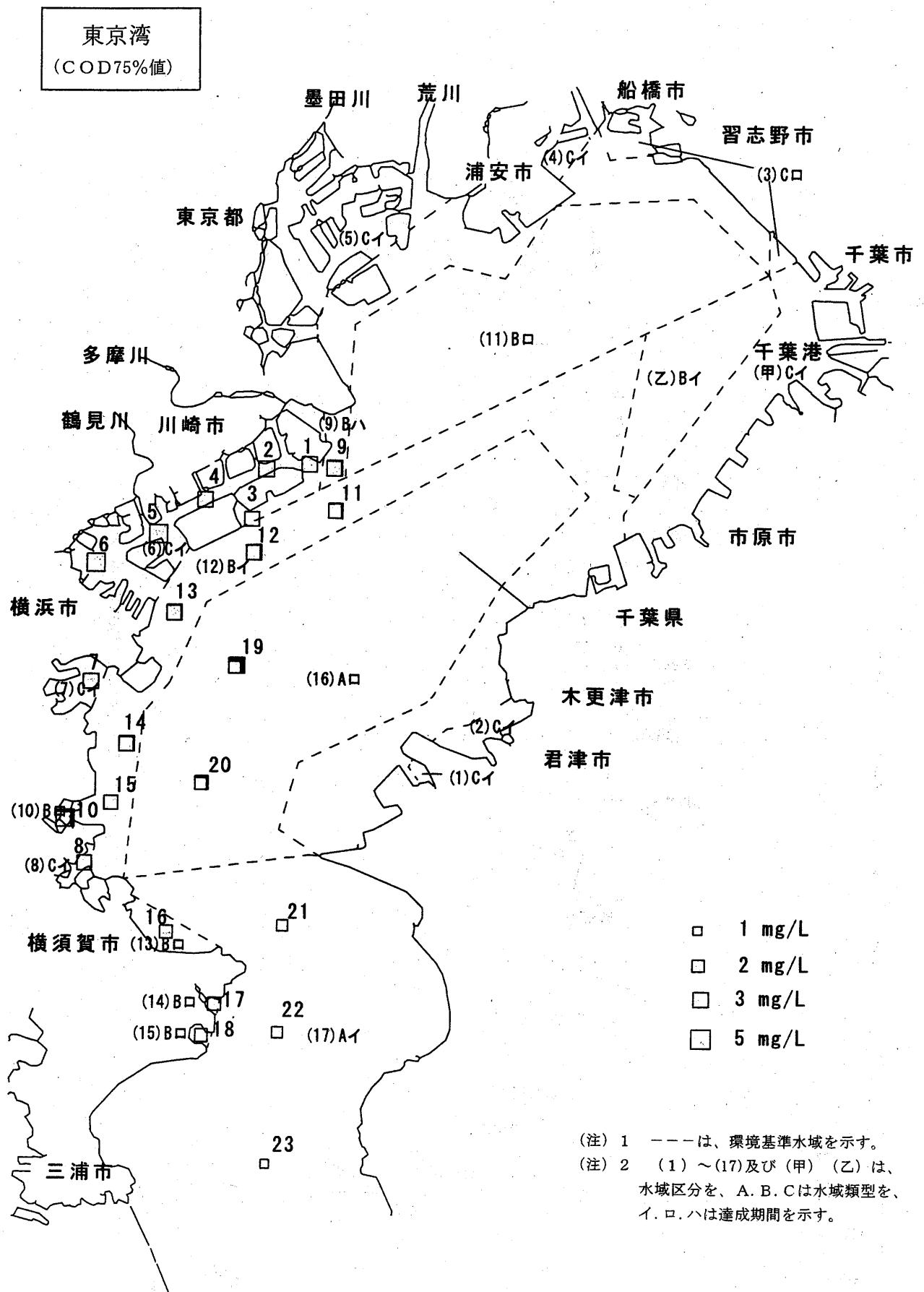


(海 域)



図-9 海域の水質汚濁状況



相模湾
(COD75%値)

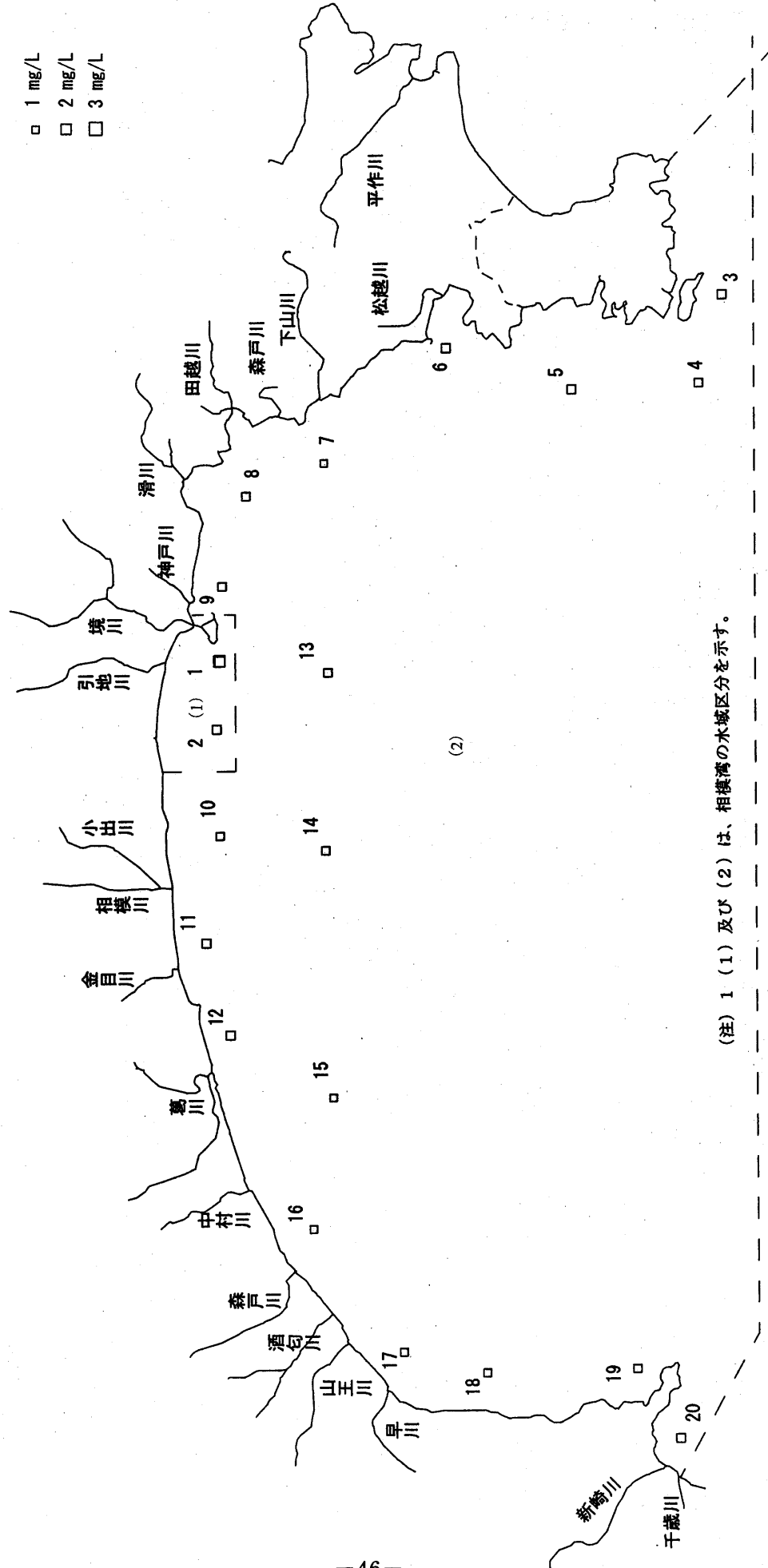


図-10 東京湾における年平均値の推移(全測定地点の平均値)
(pH・COD・全窒素・全磷)

図10-1 東京湾(全域)

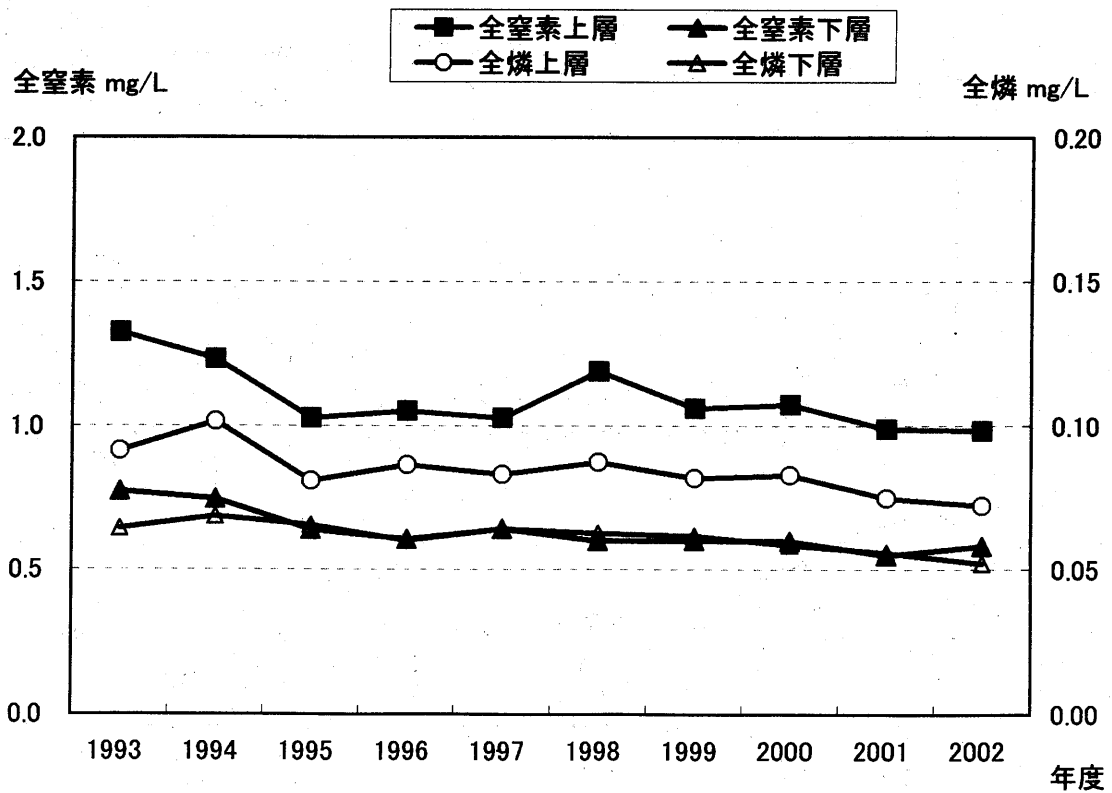
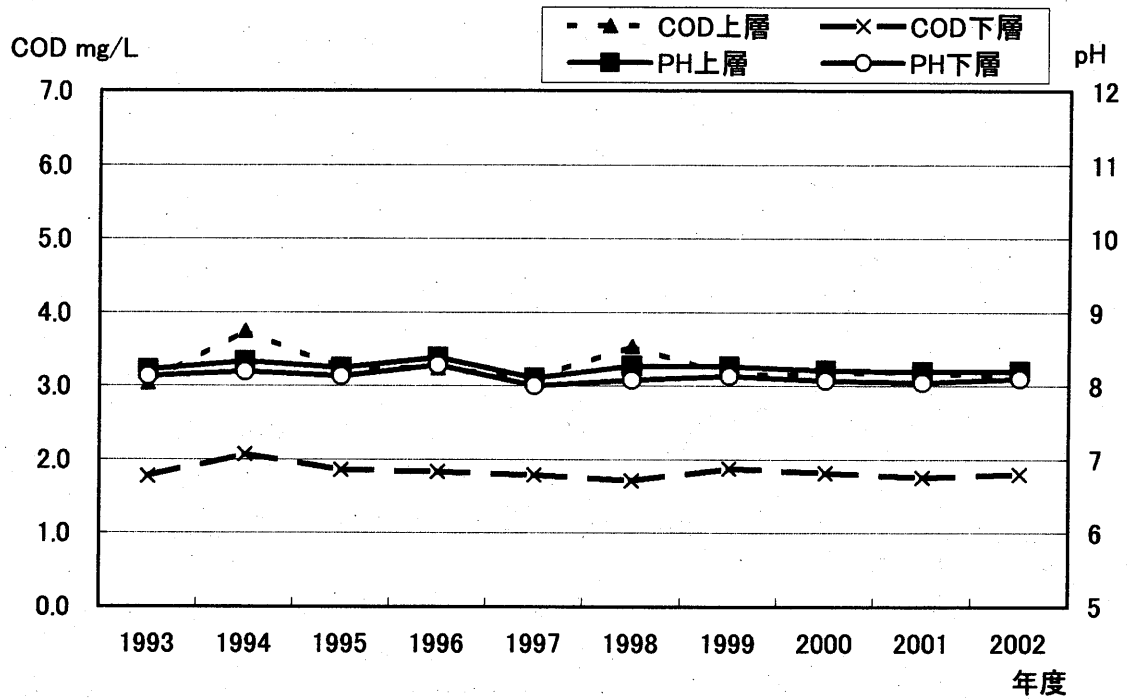
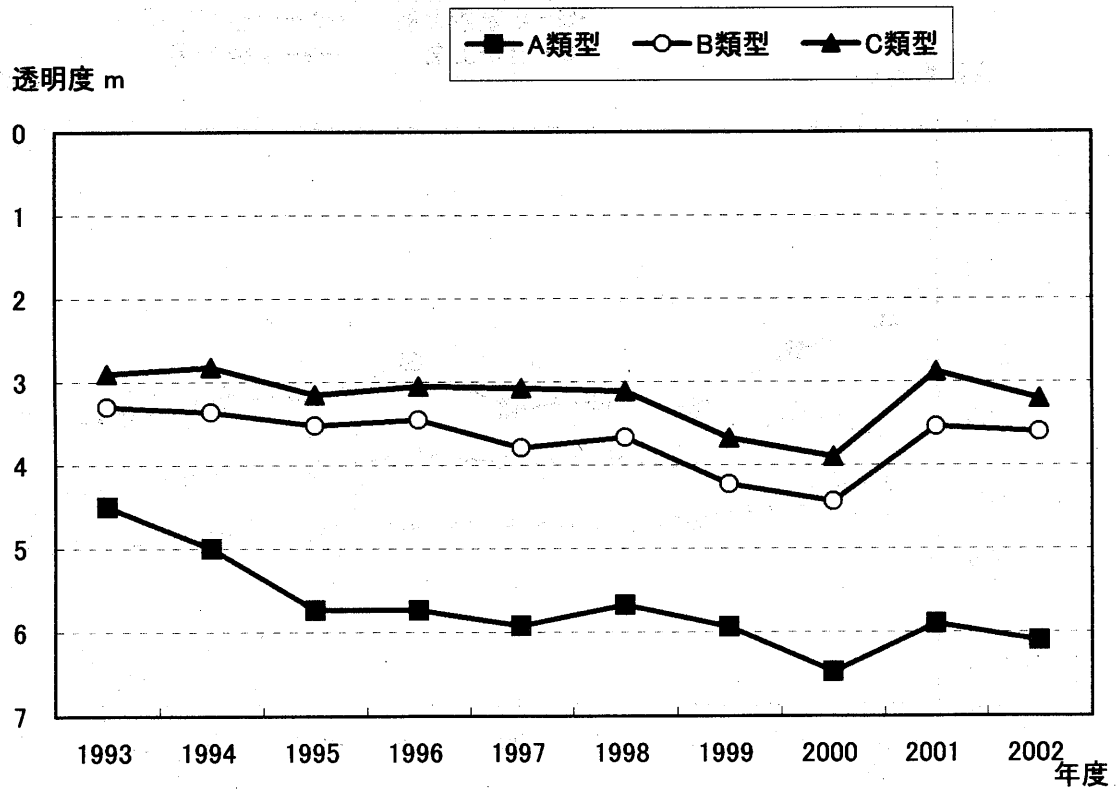
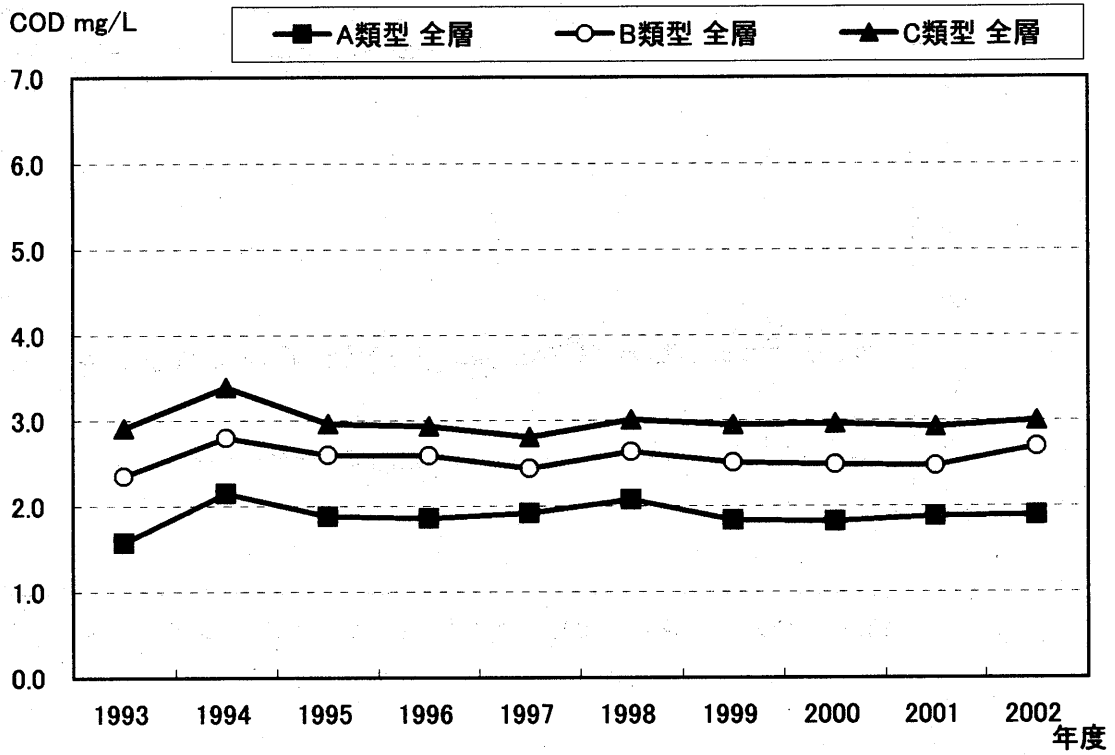
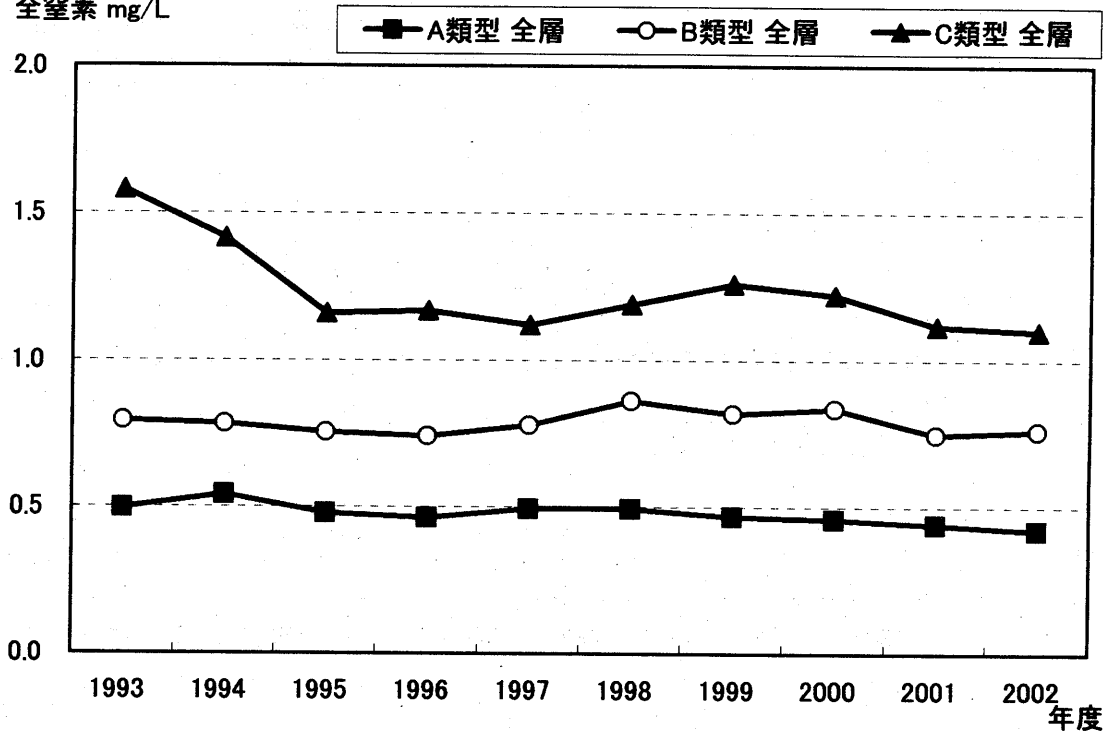


図10-2 東京湾(類型別)
(COD・透明度・全窒素・全燐)



全窒素 mg/L



全磷 mg/L

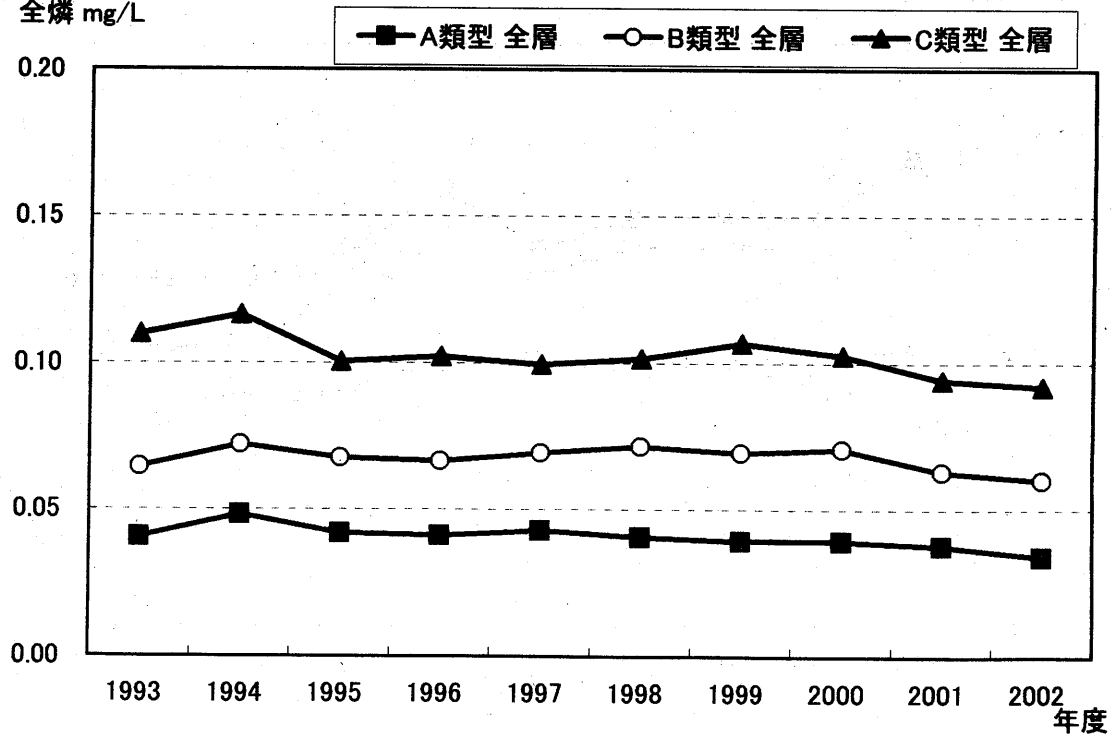


図-11 東京湾の主要地点における年平均値の推移
(pH・COD・全窒素・全燐)

図11-1 横浜港内

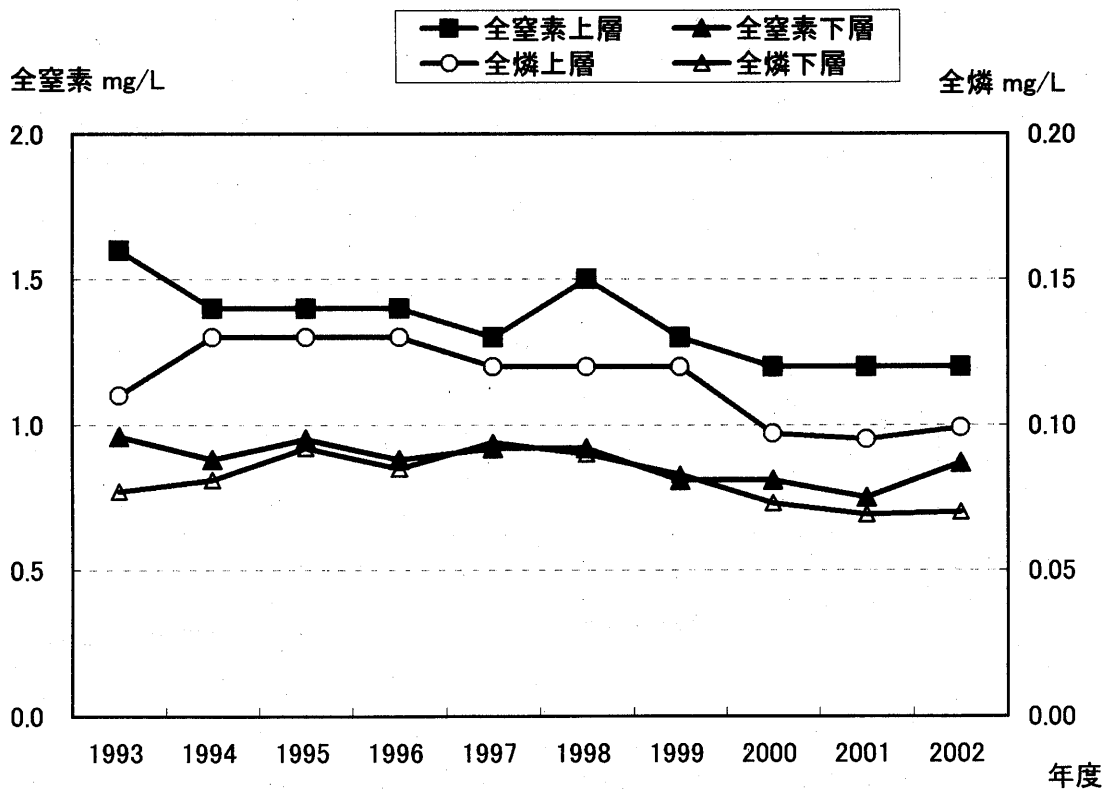
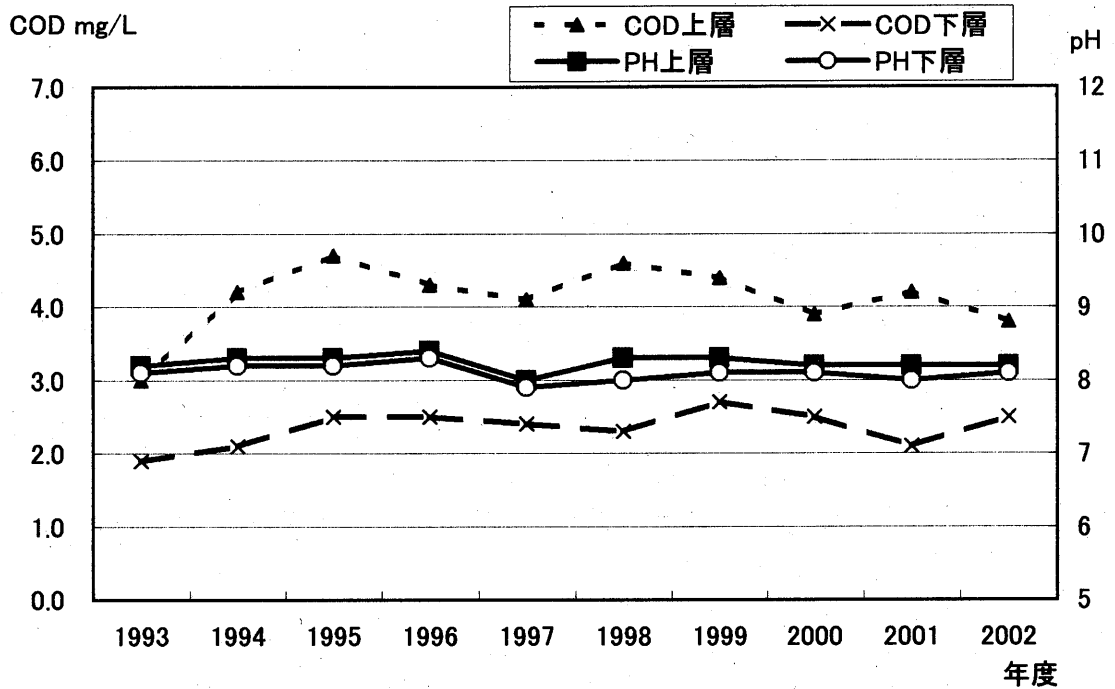


図11-2 東扇島沖

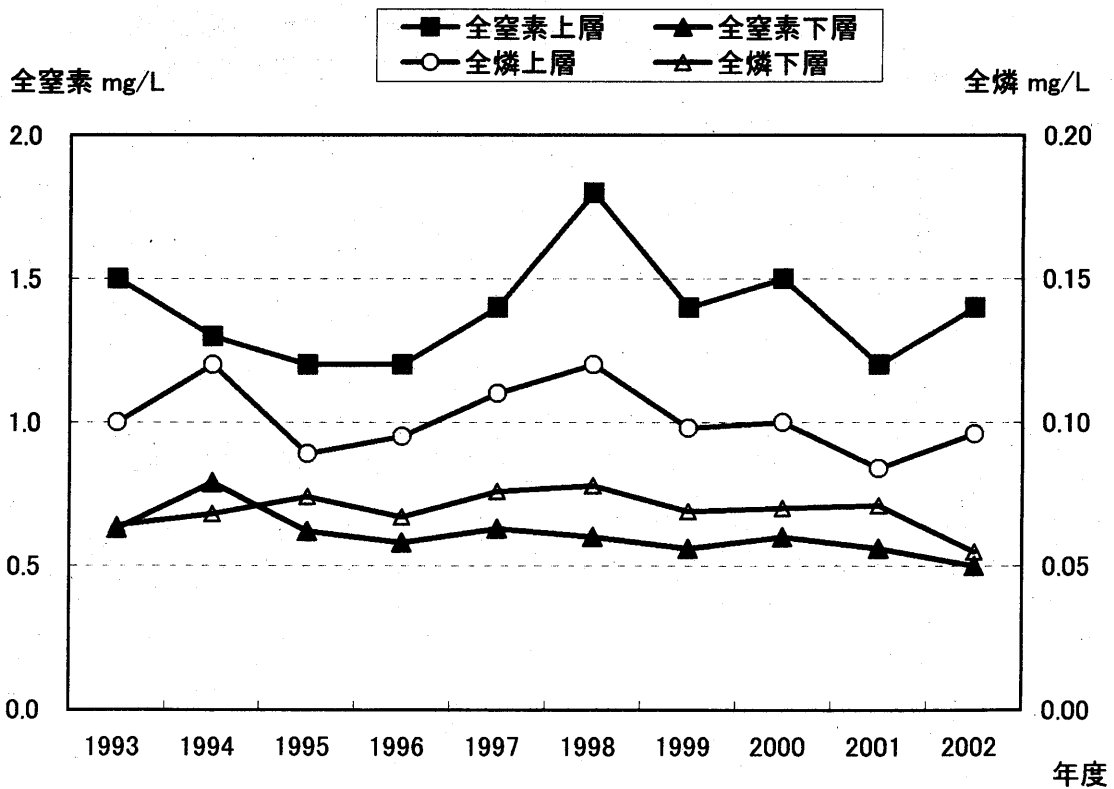
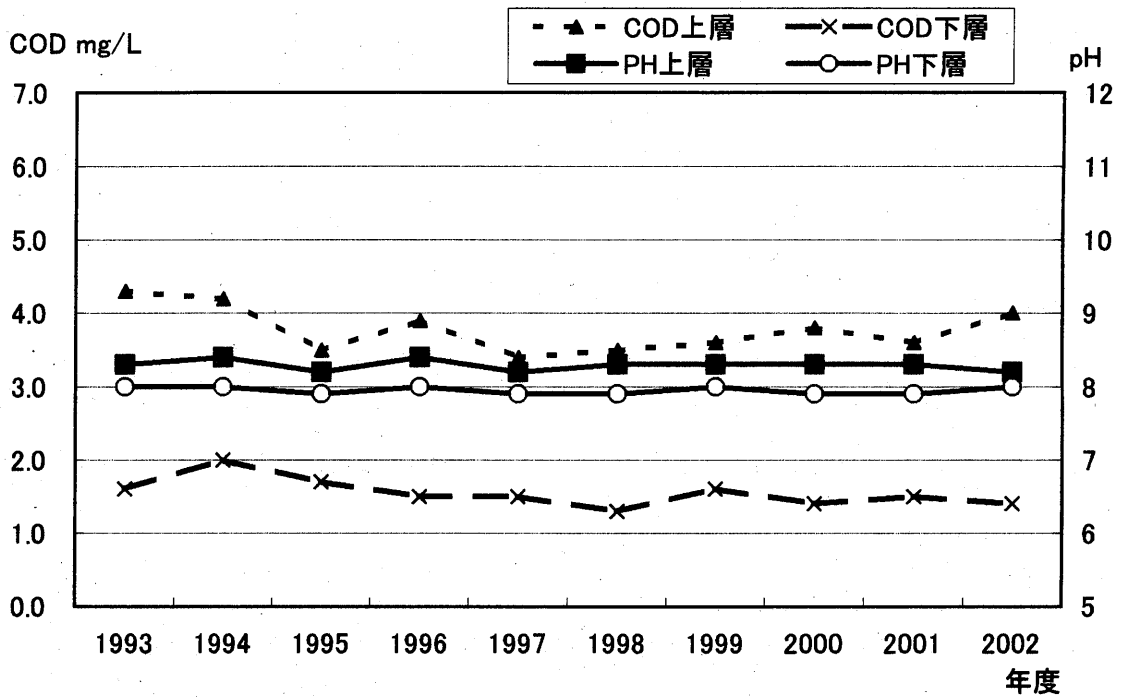


図11-3 富岡沖

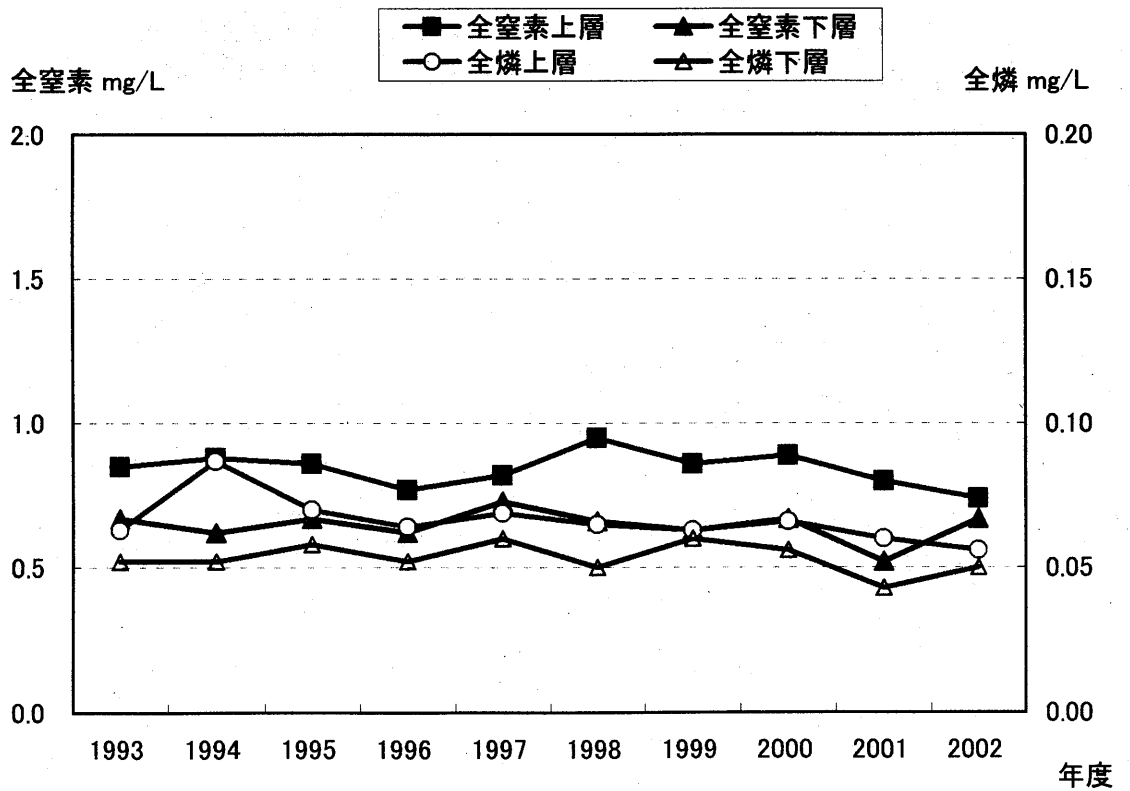
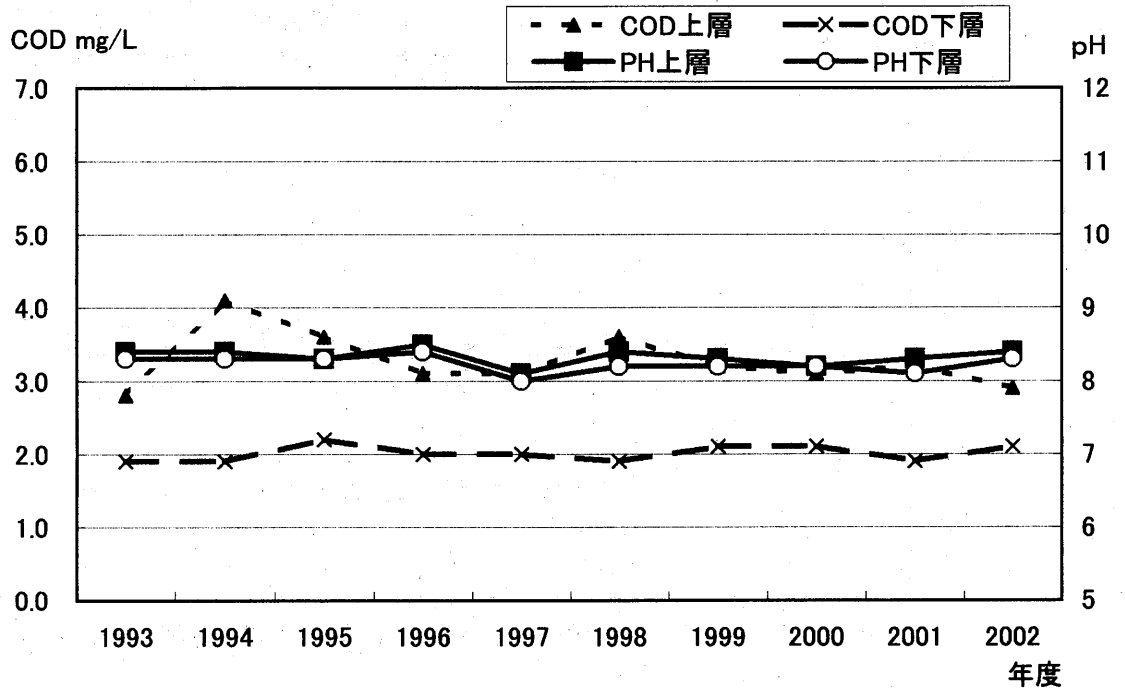


图11-4 天津湾

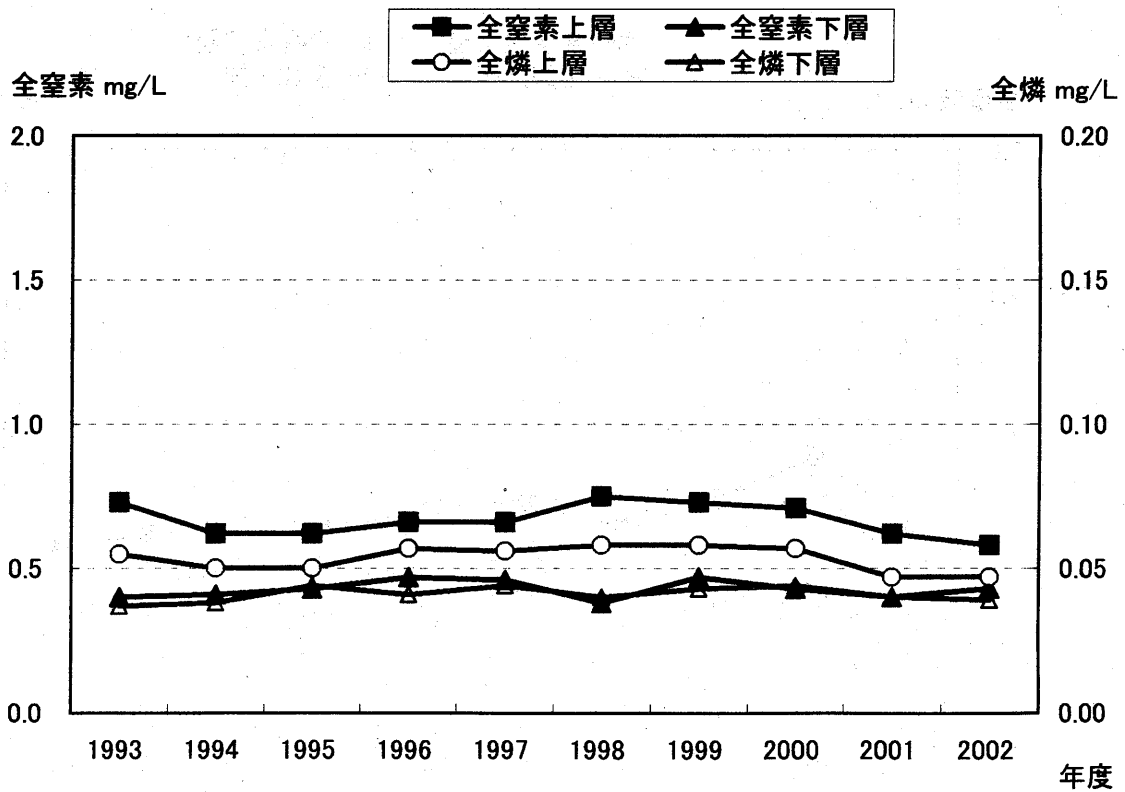
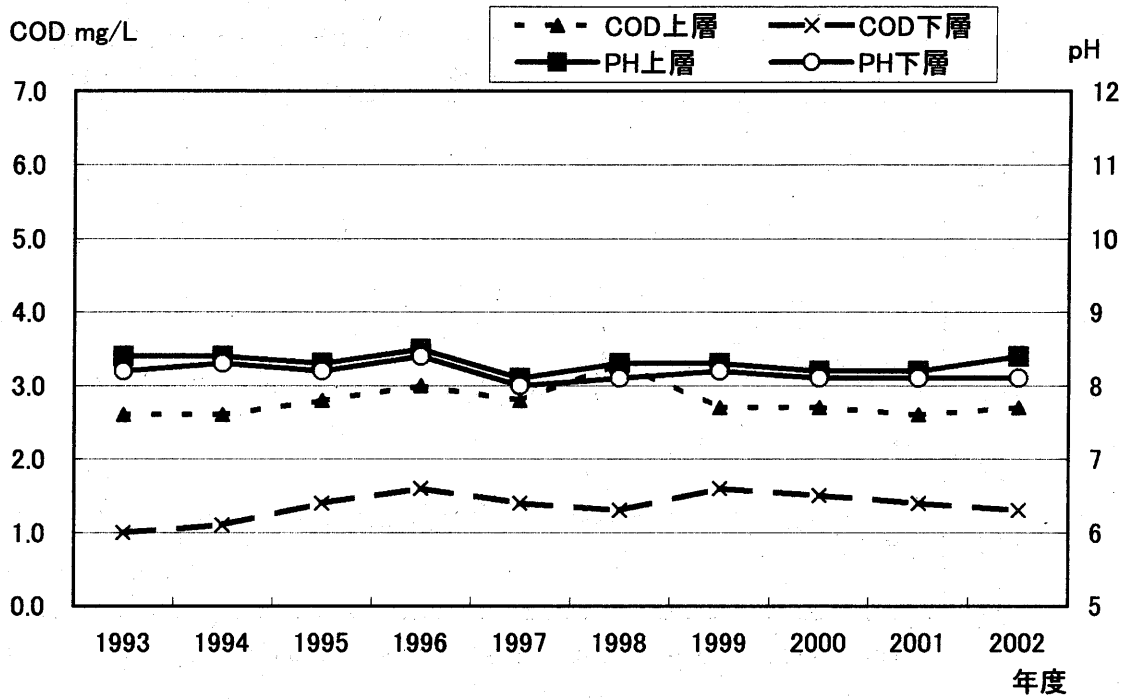


図11-5 中の瀬南

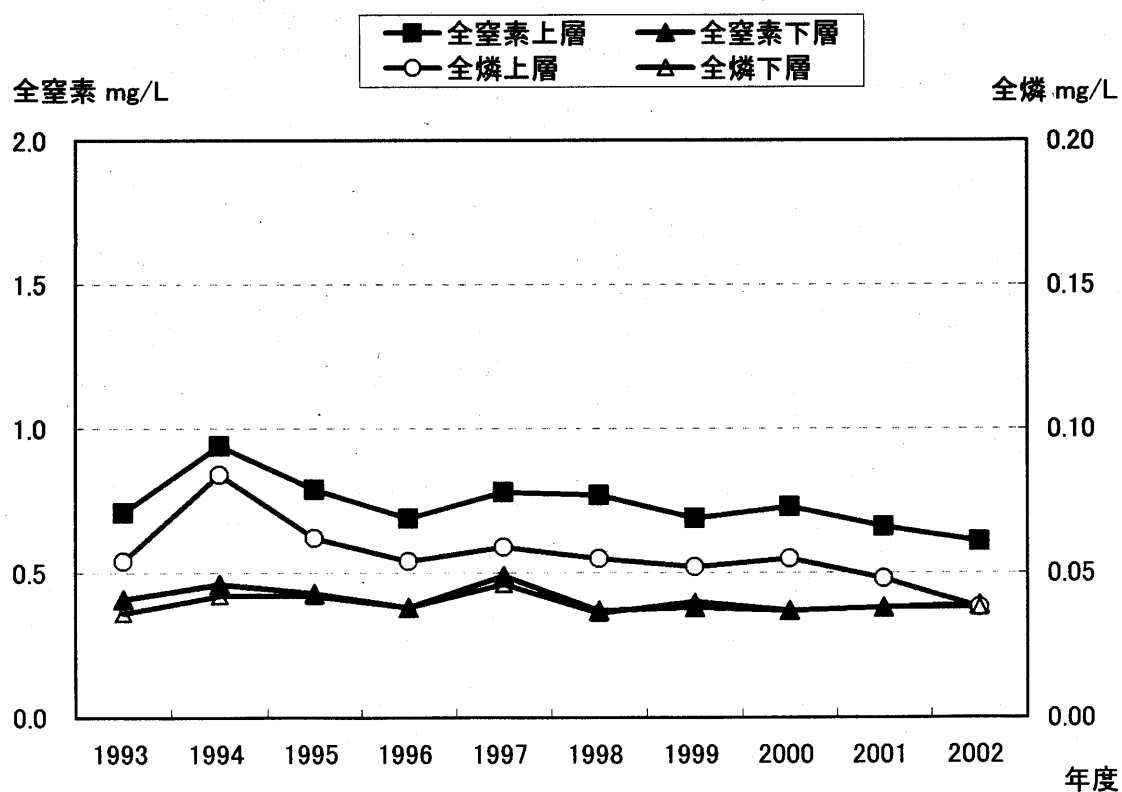
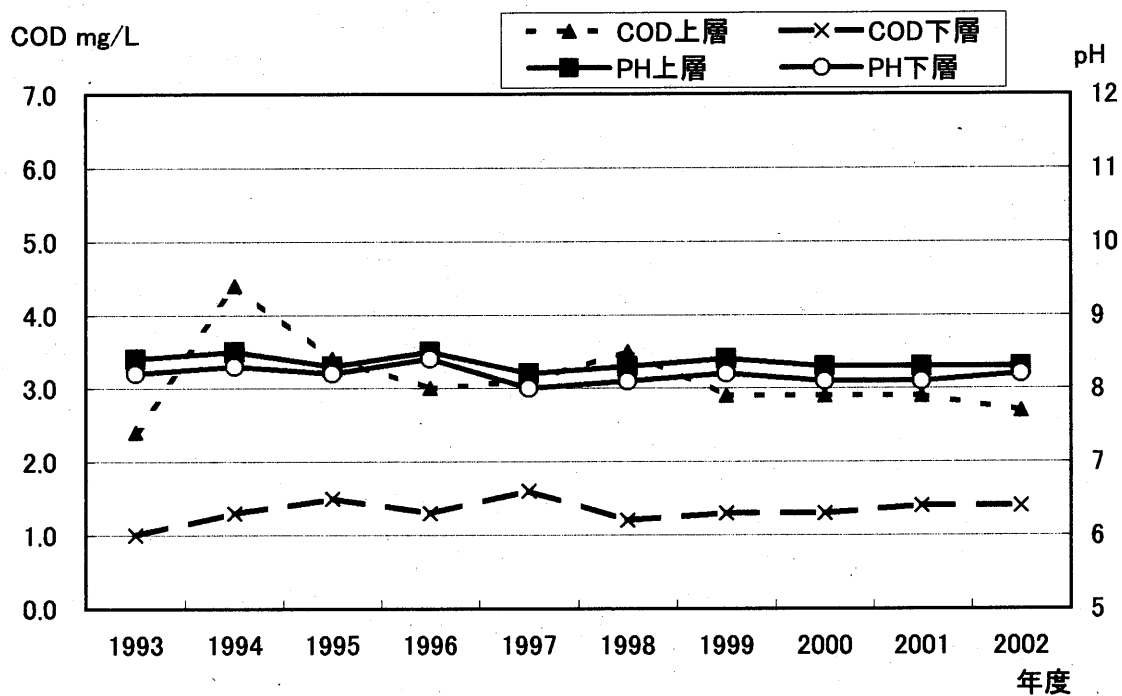


図11-6 浦賀沖

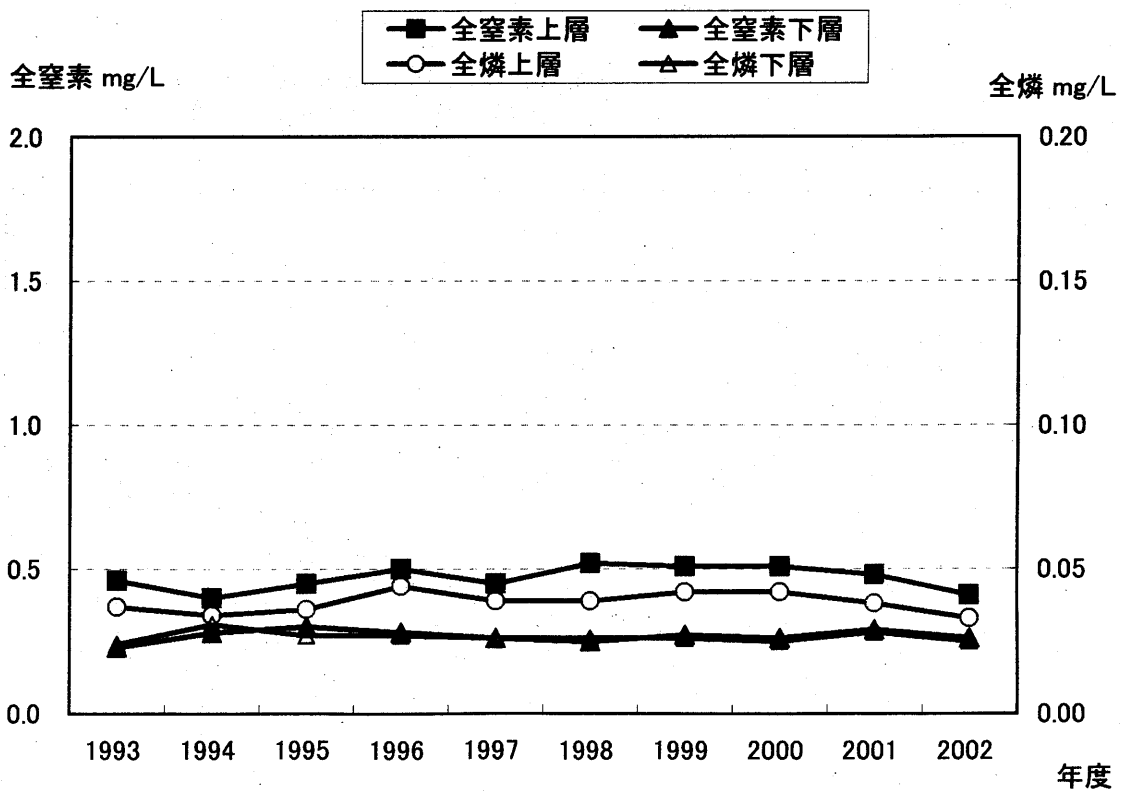
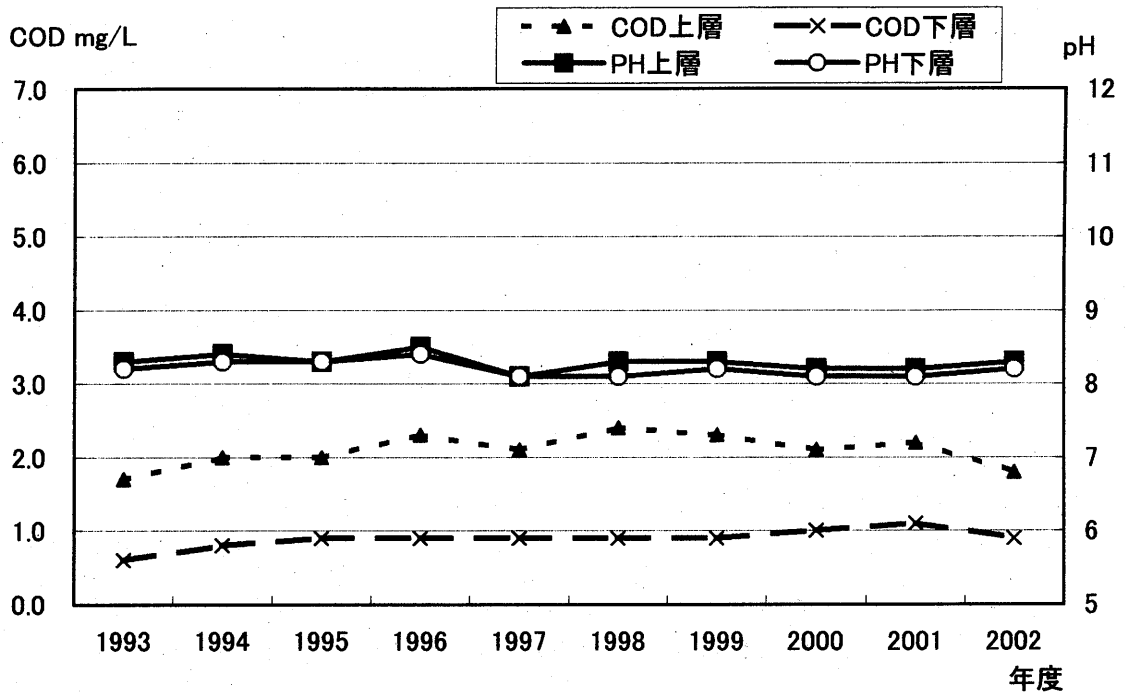


図-12 東京湾の主要地点における月別推移
(pH・COD・全窒素・全磷)

図12-1 横浜港内

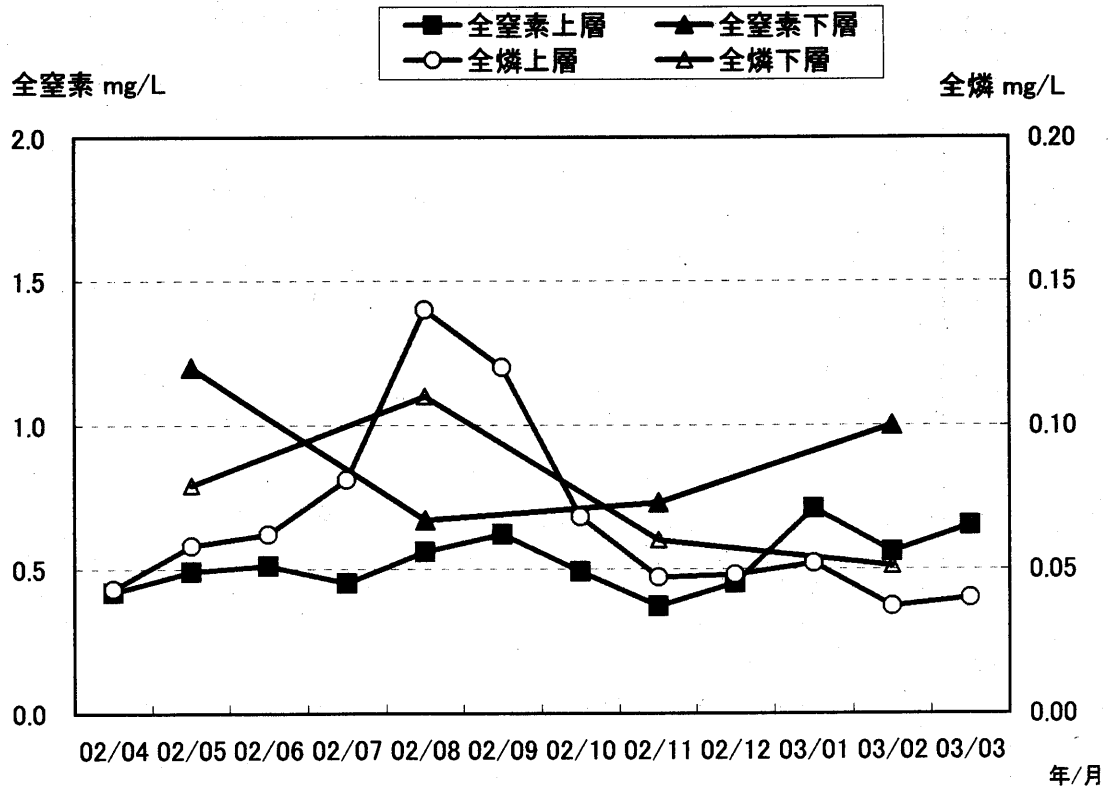
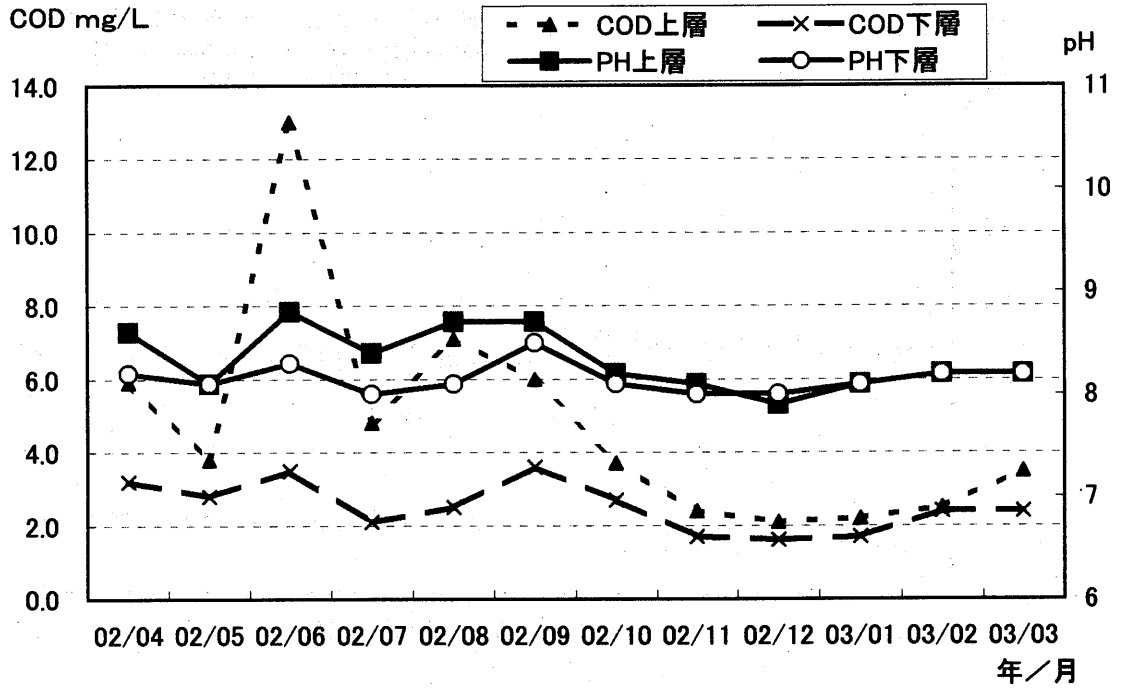


图12-2 東扇島沖

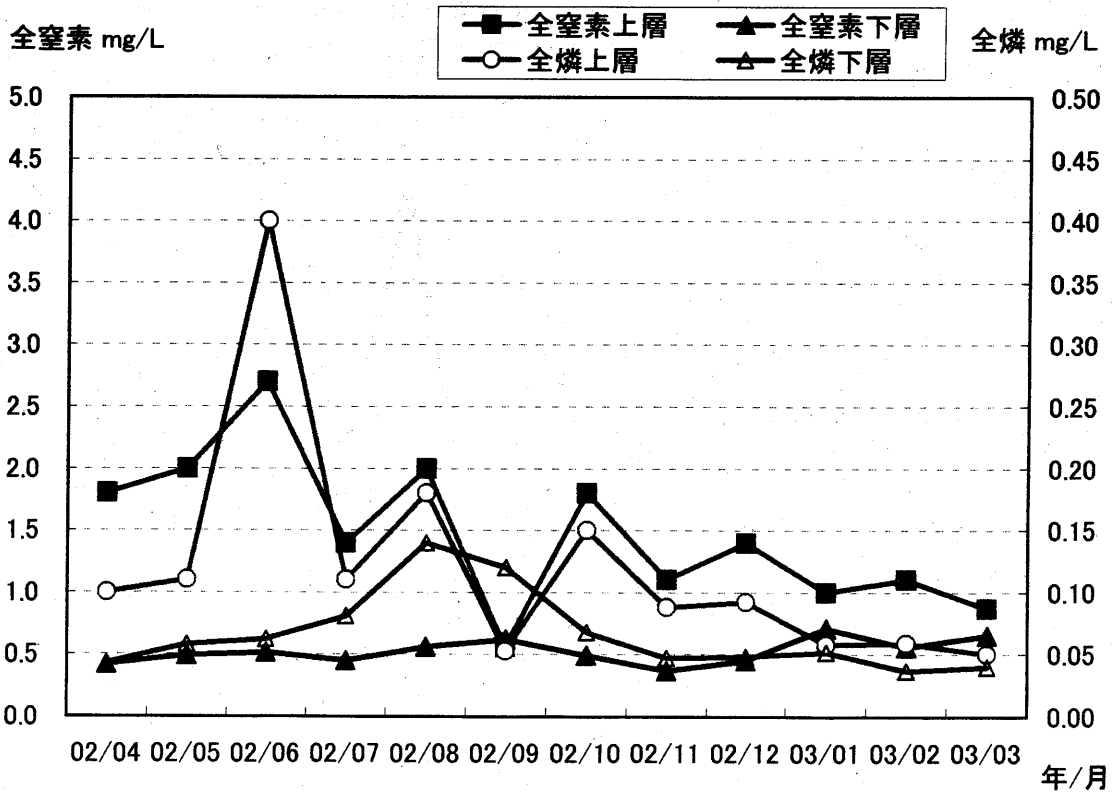
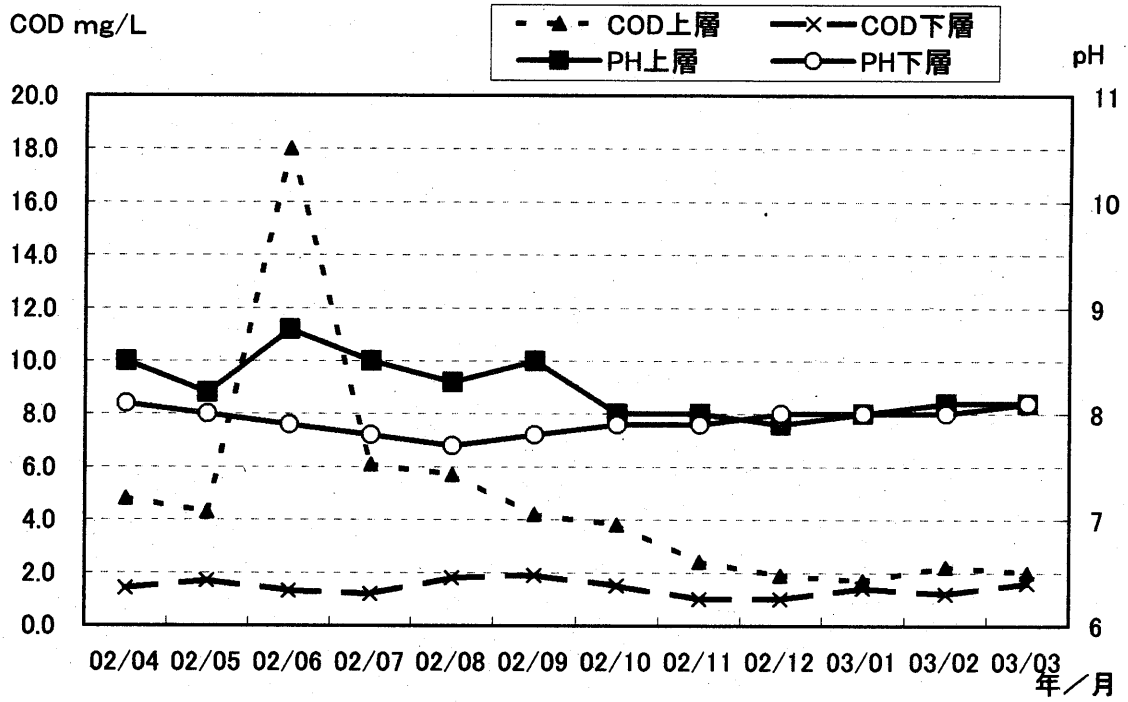


图12-3 富阳冲

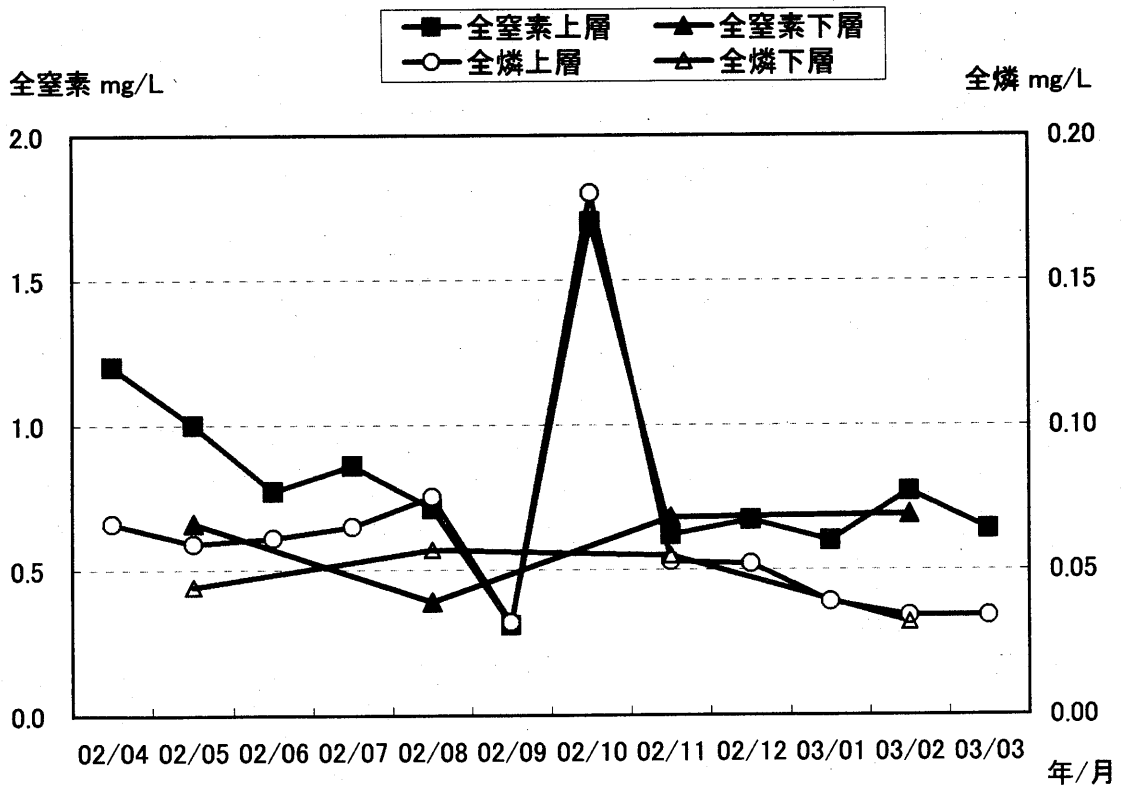
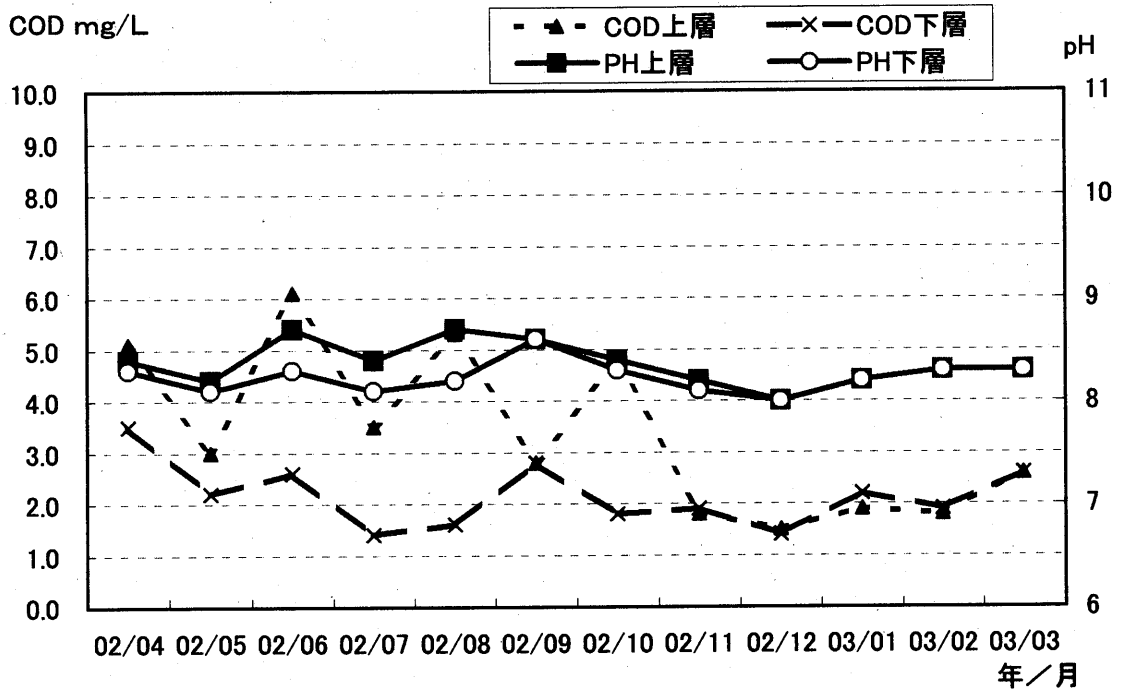


图12-4 大津湾

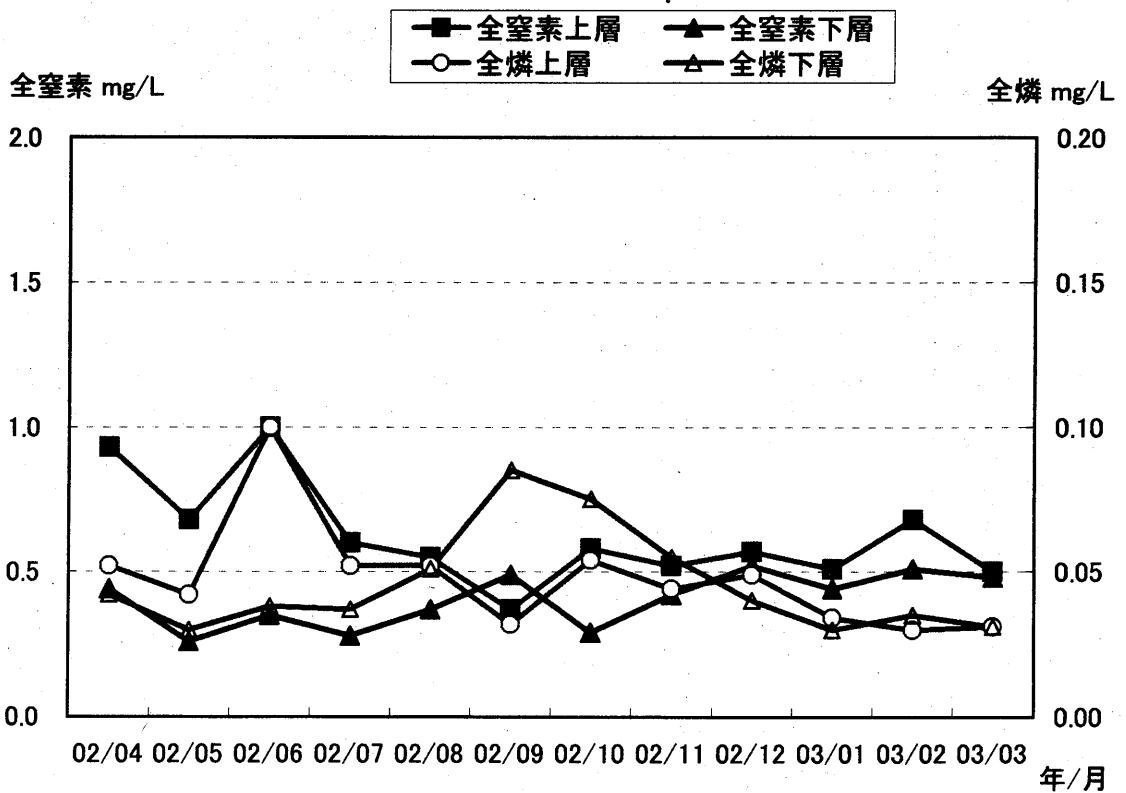
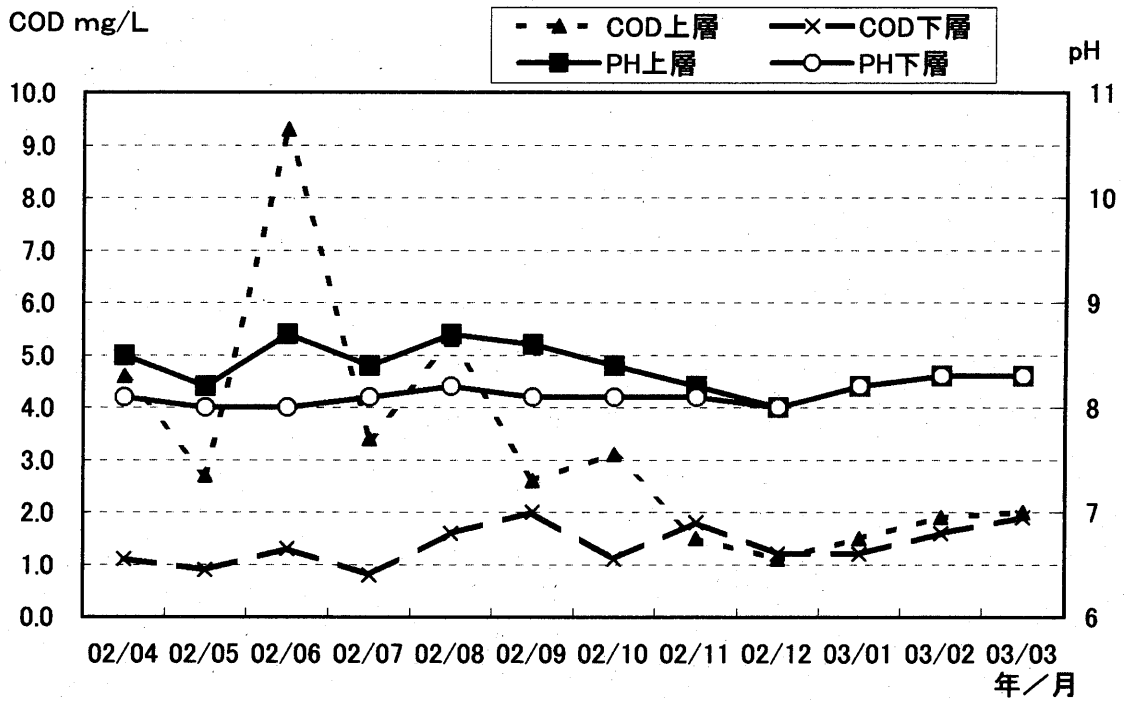


図12-5 中の瀬南

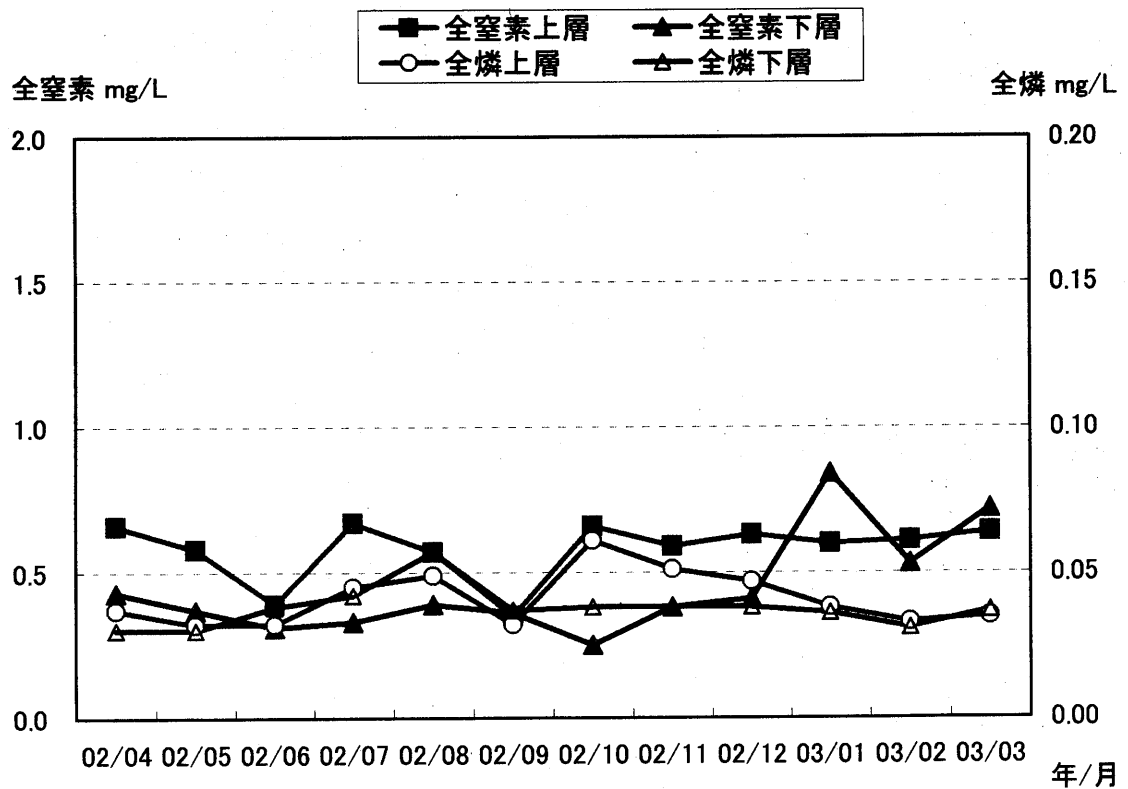
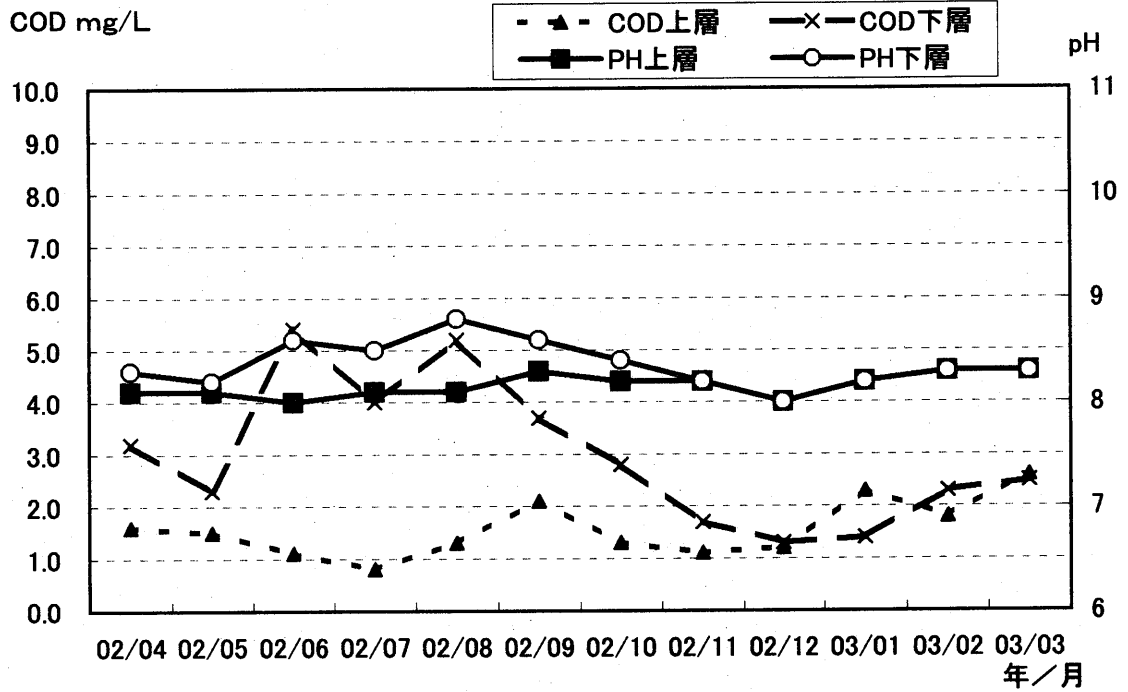


图12-6 浦賀沖

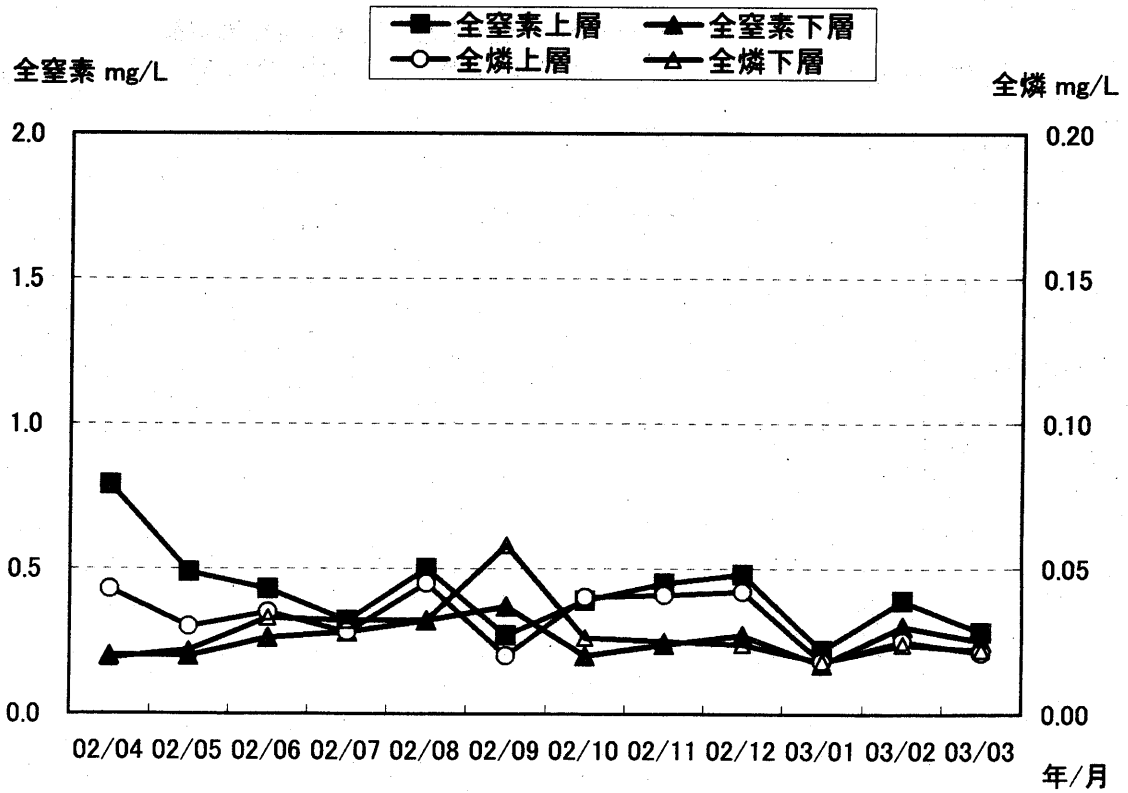
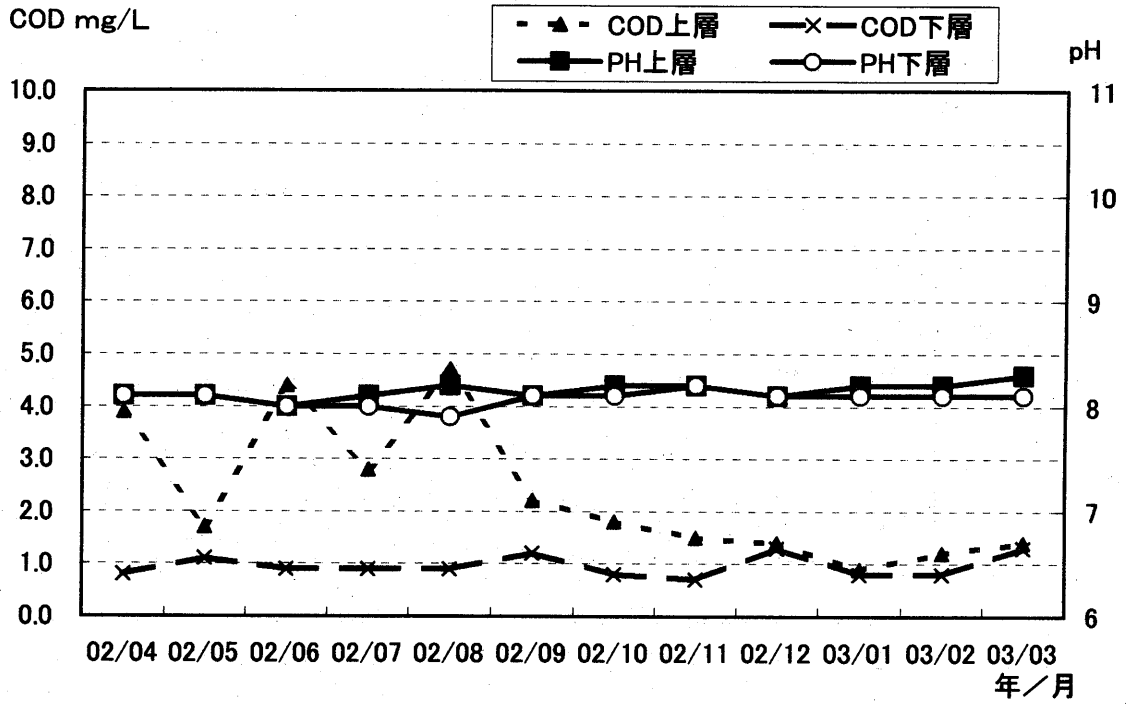


図-13 相模湾における年平均値の推移(全測定地点の平均値)
(pH・COD・全窒素・全磷)

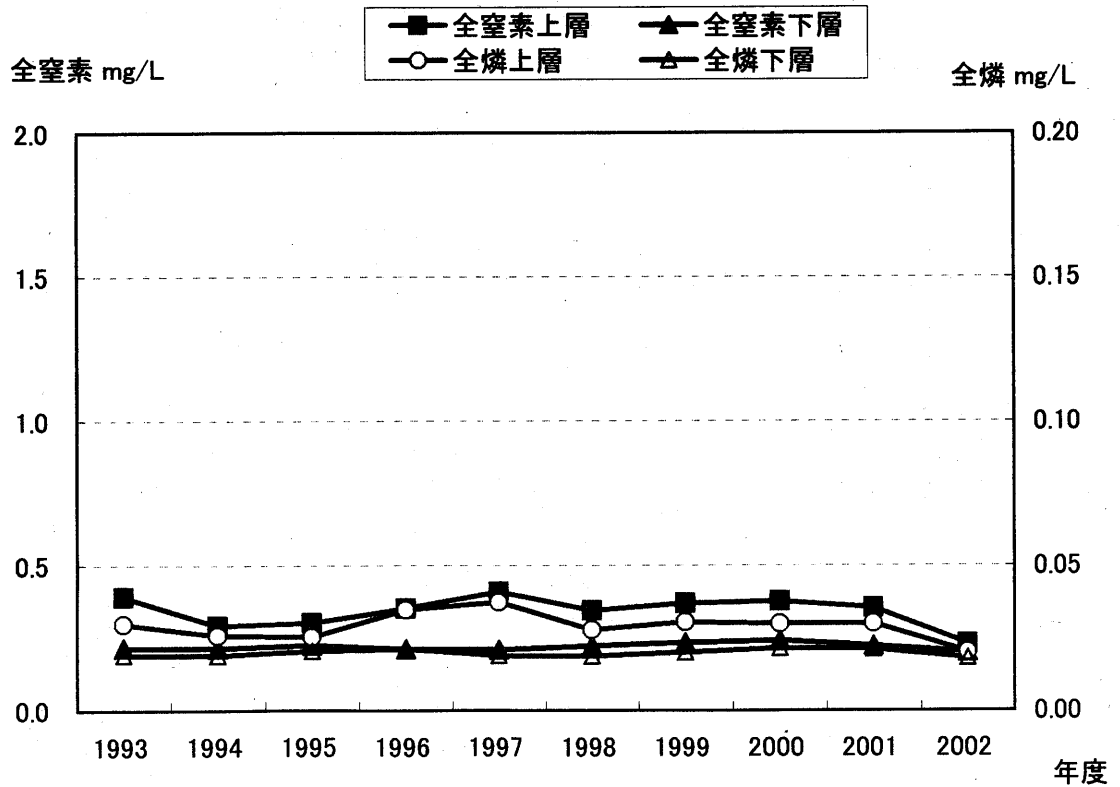
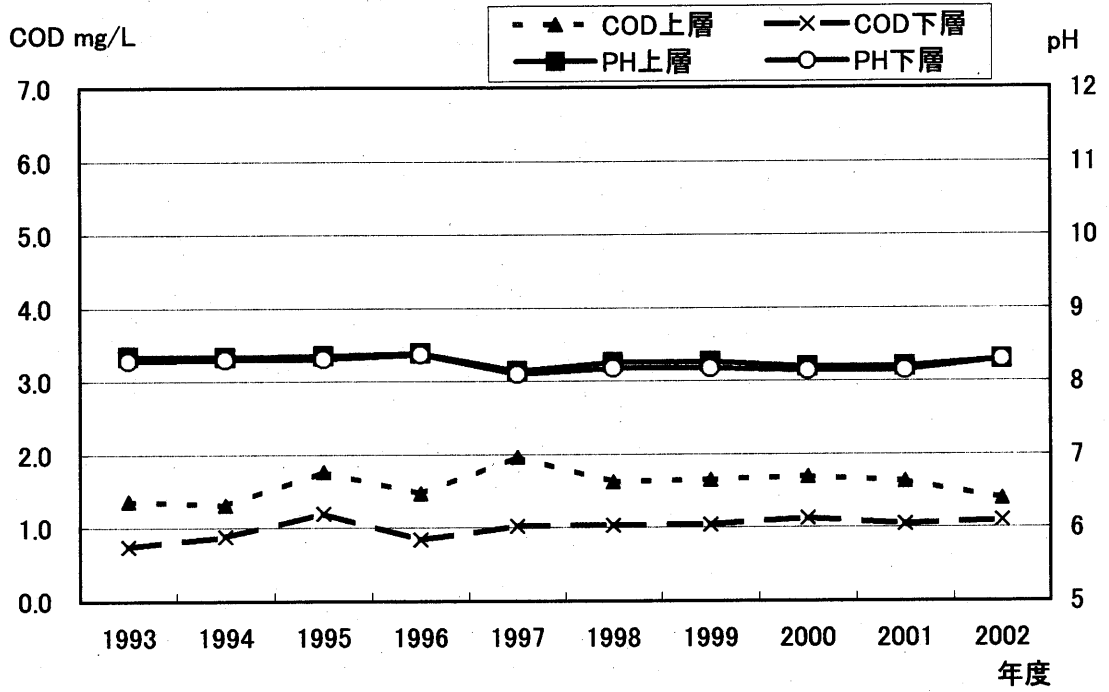


図-14 相模湾の主要地点における年平均値の推移
(pH・COD・全窒素・全磷)

図14-1 辻堂沖

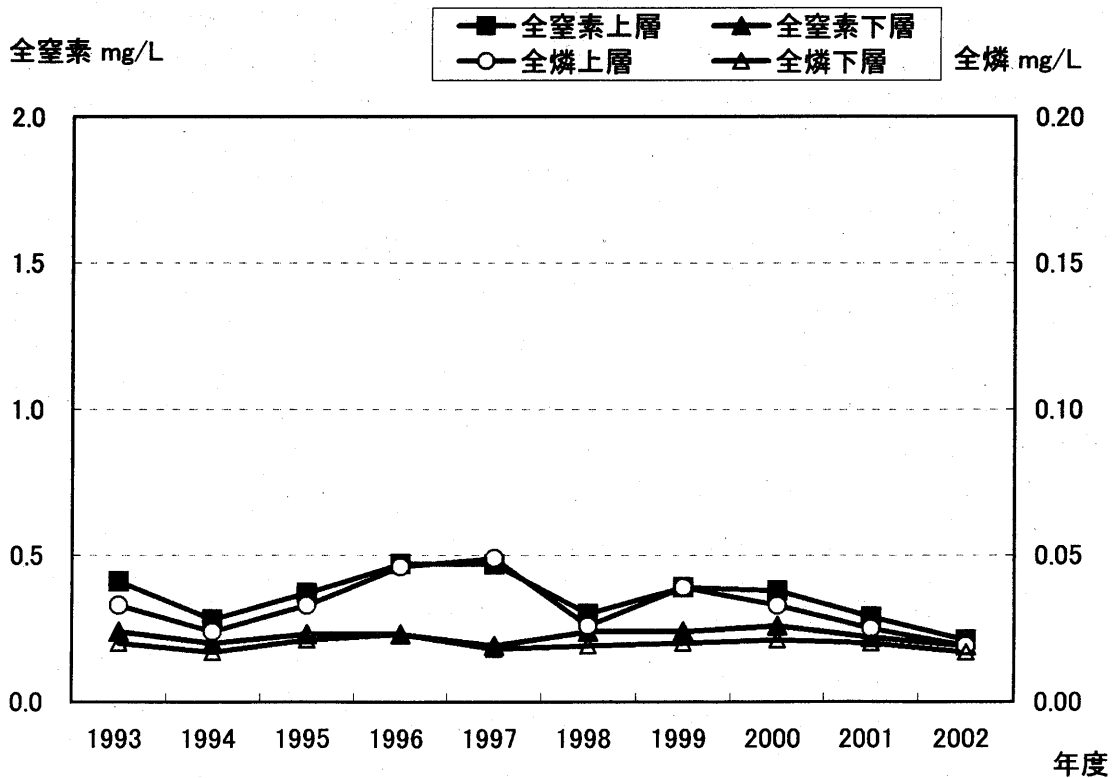
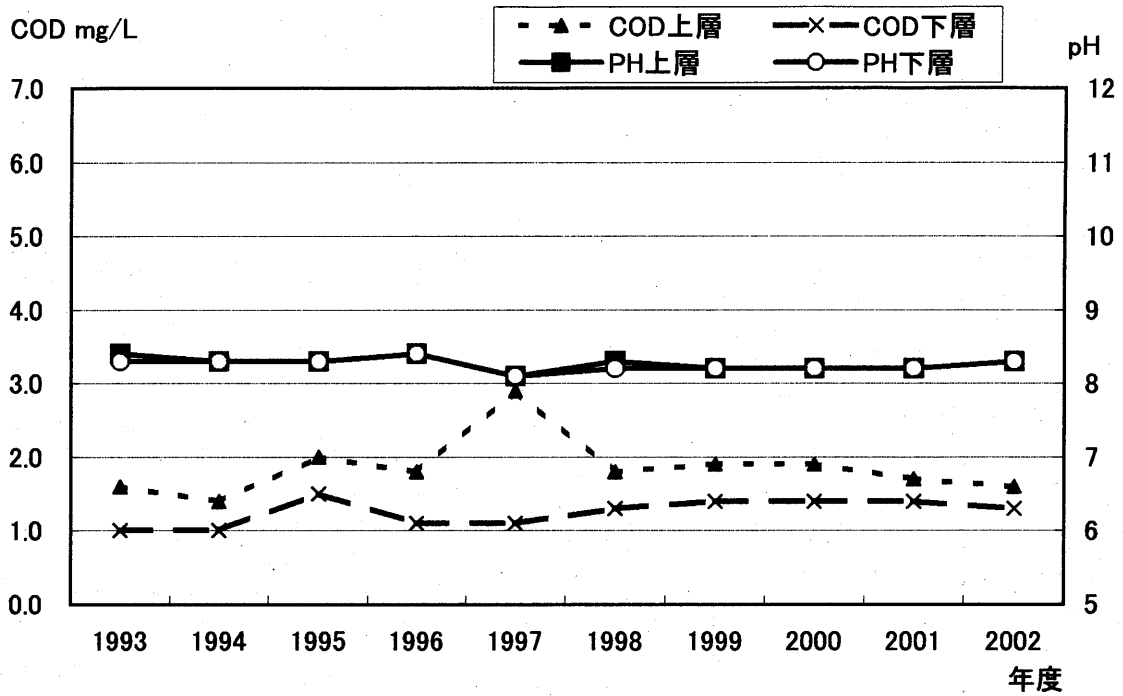


図14-2 城ヶ島西

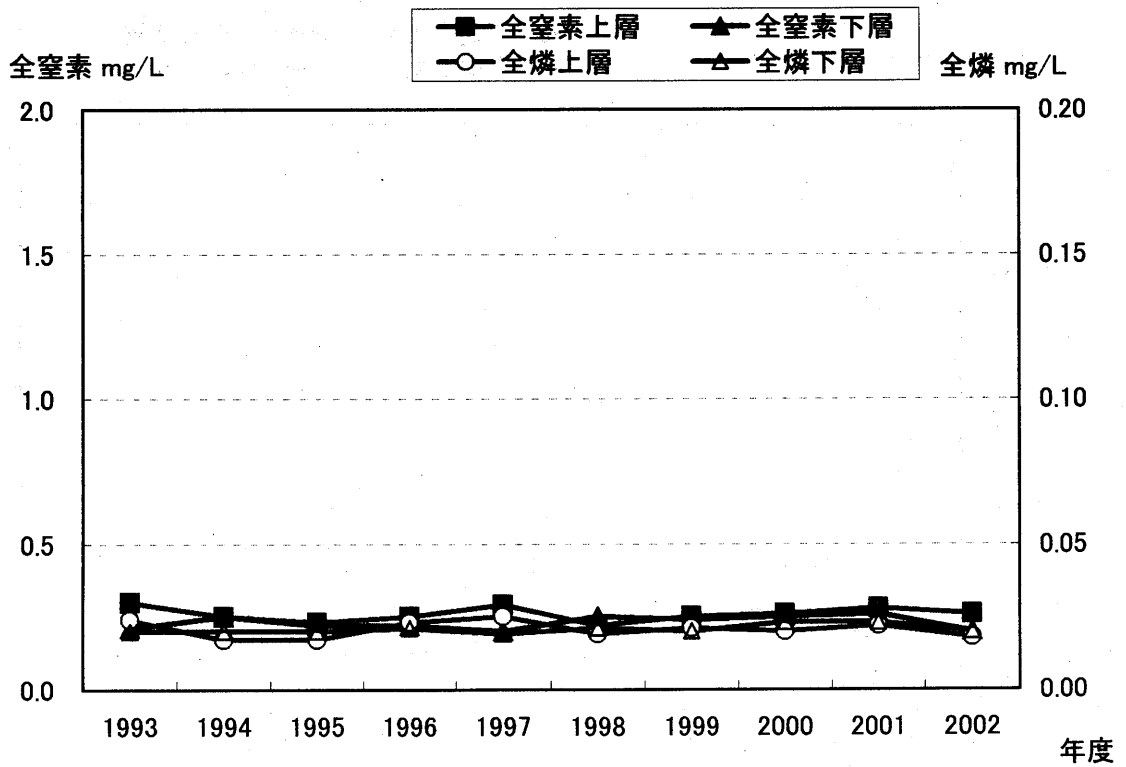
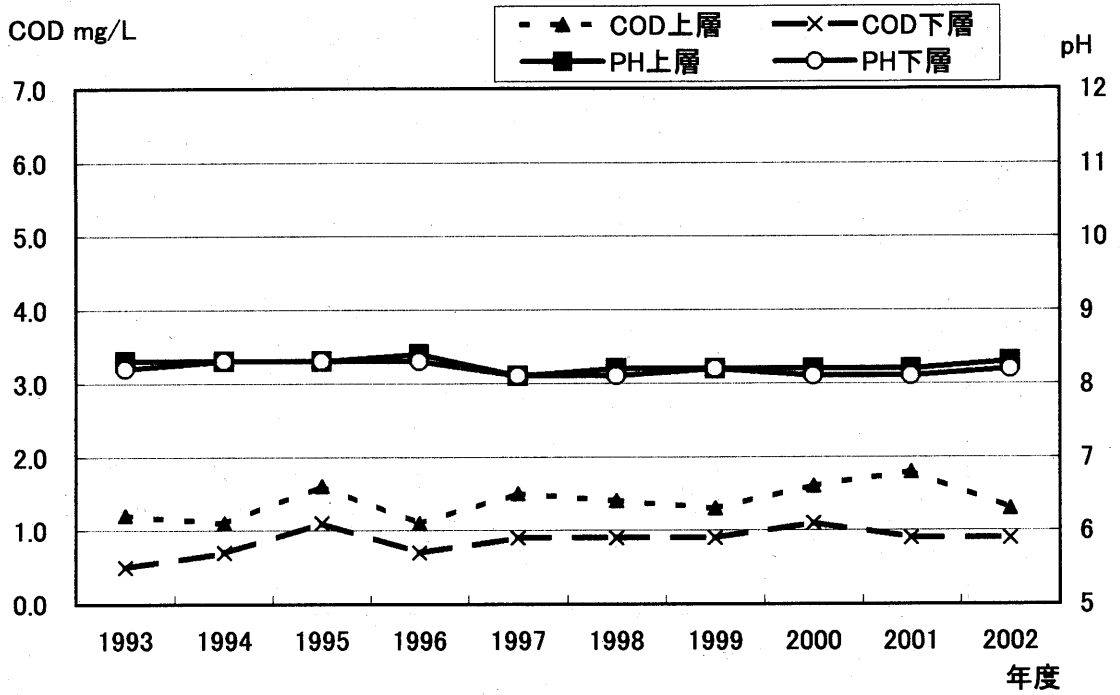


图14-3由比ヶ浜沖

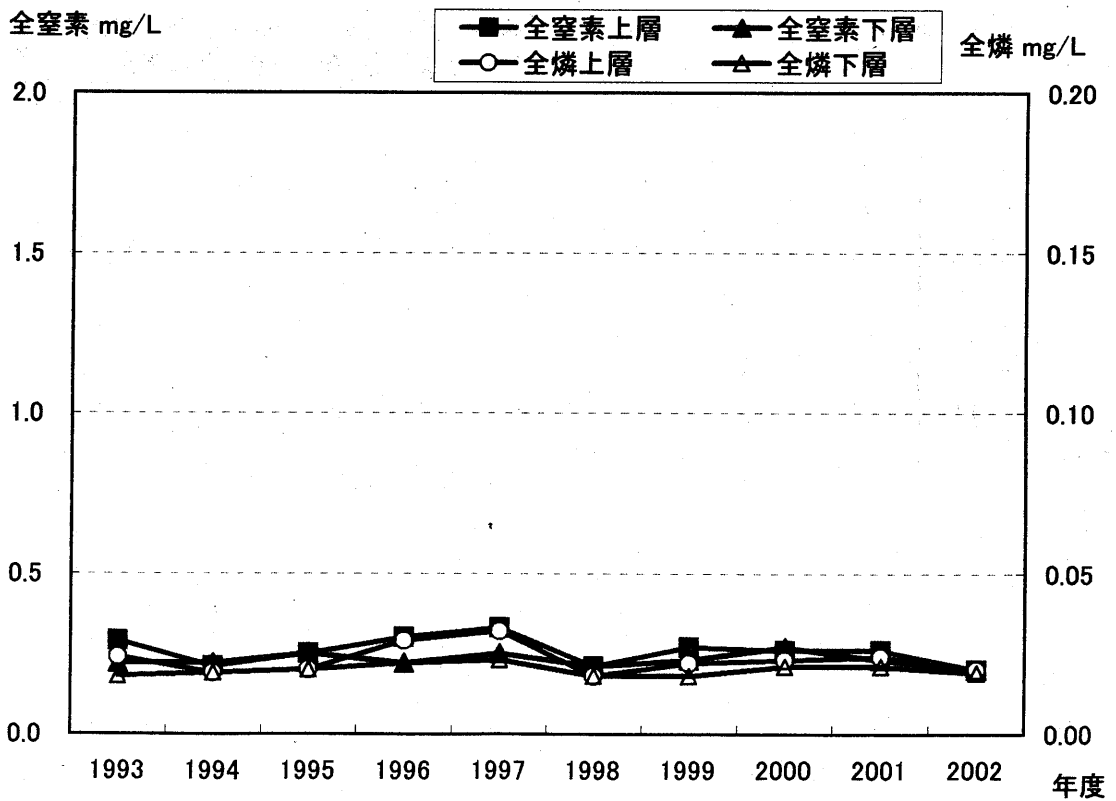
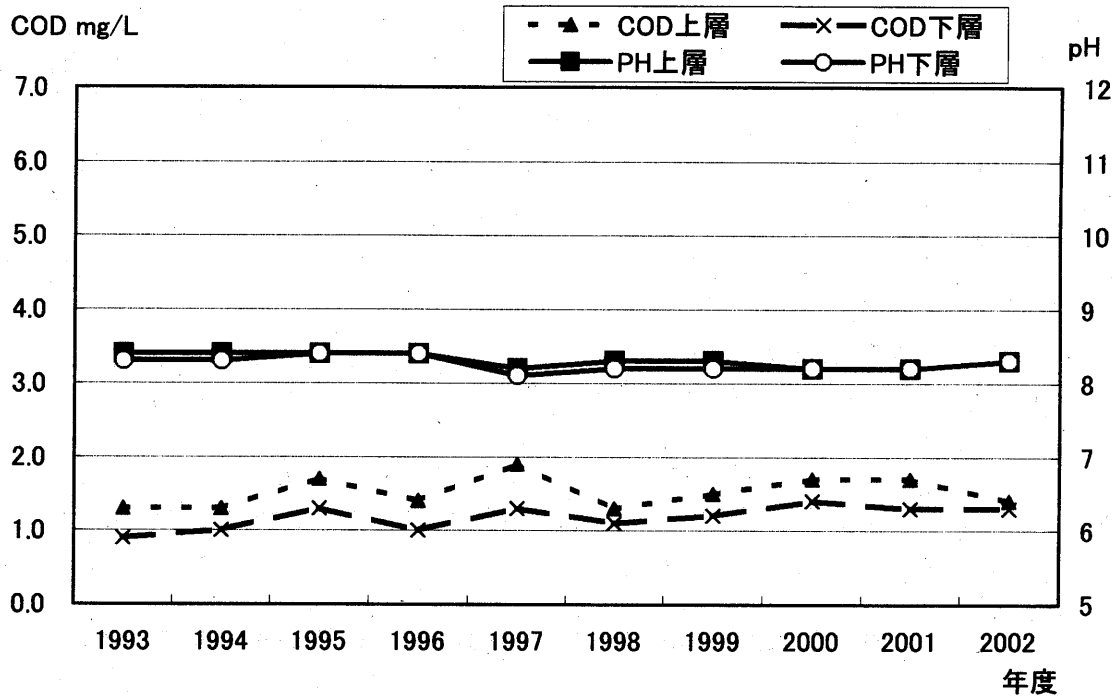


图14-4 大磯沖

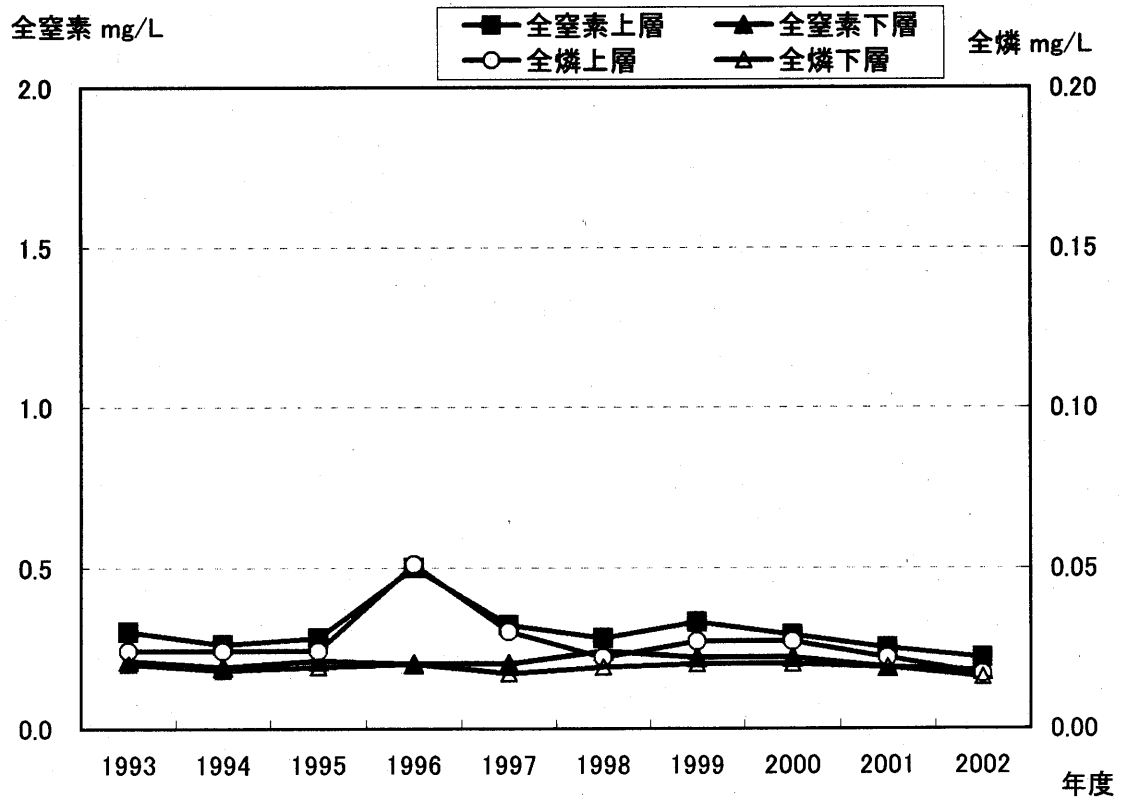
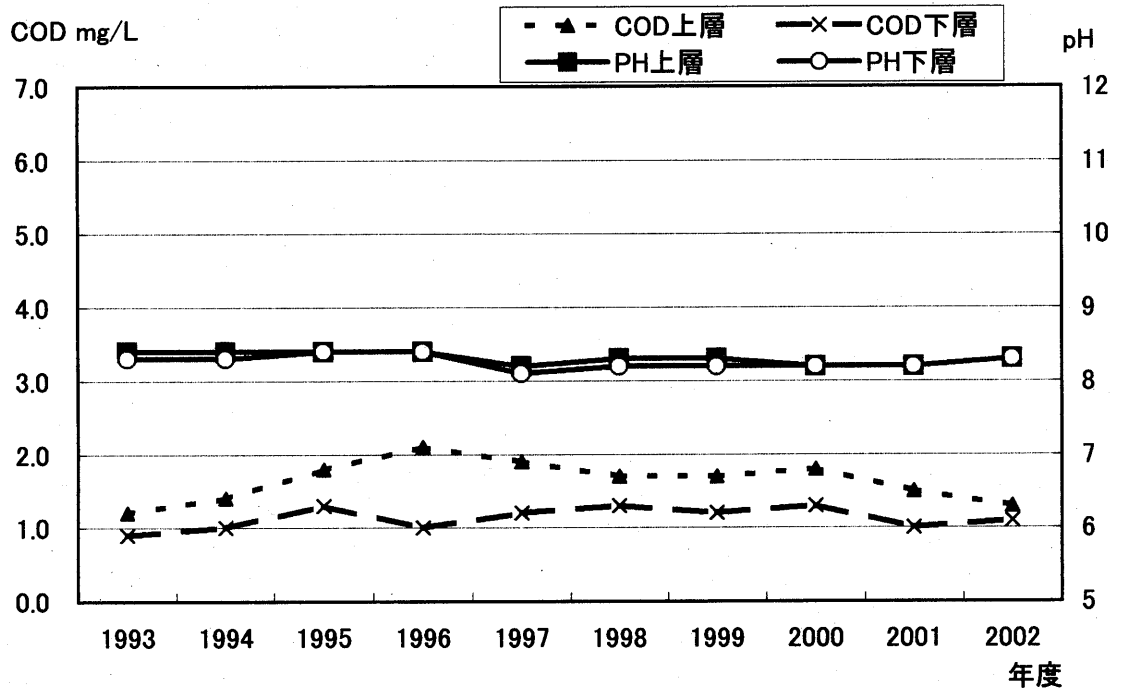


图14-5 湾央

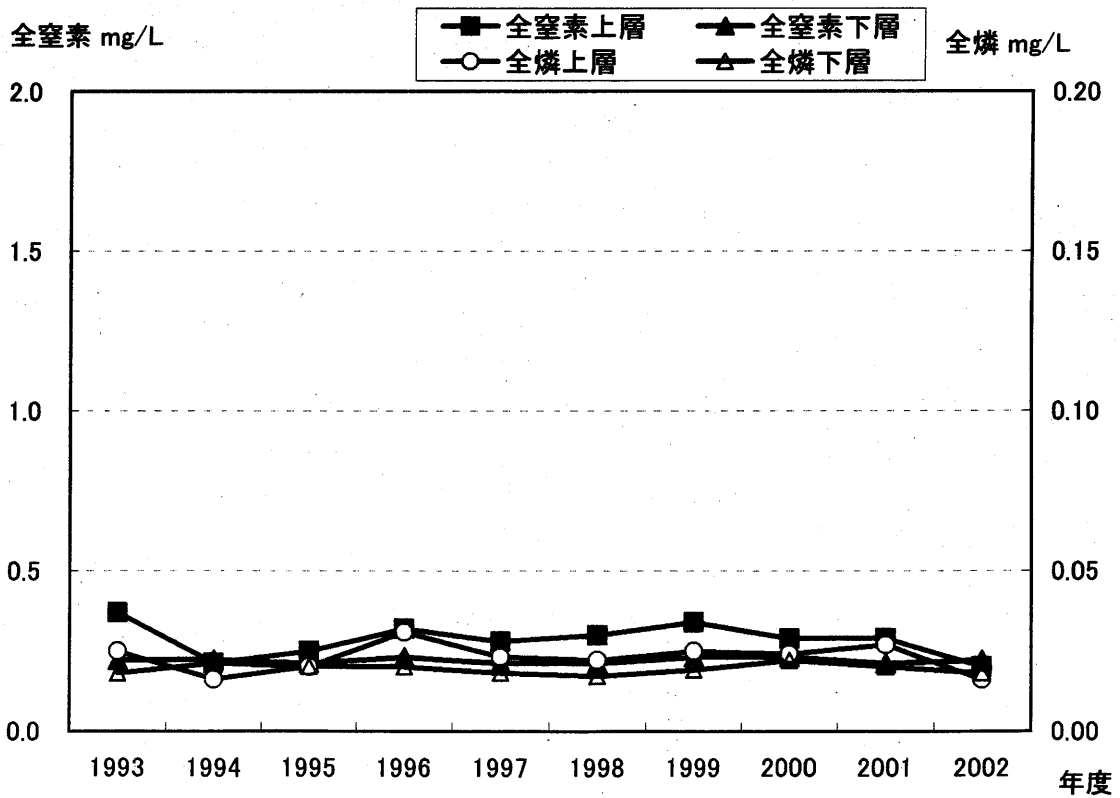
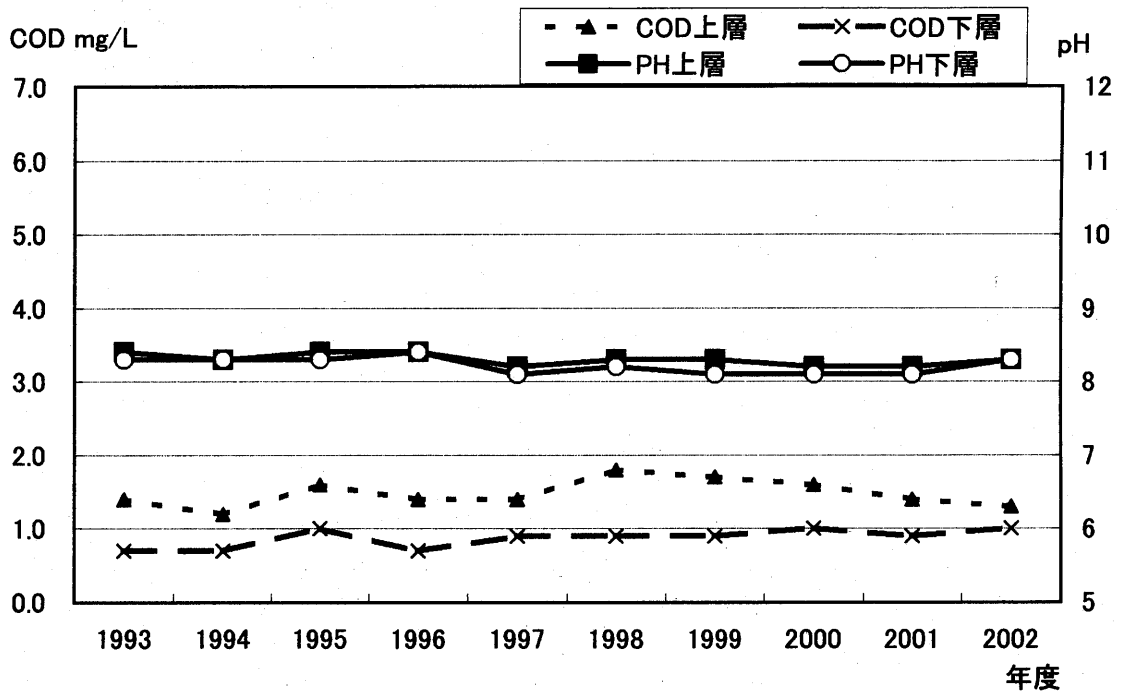


图14-6 根府川冲

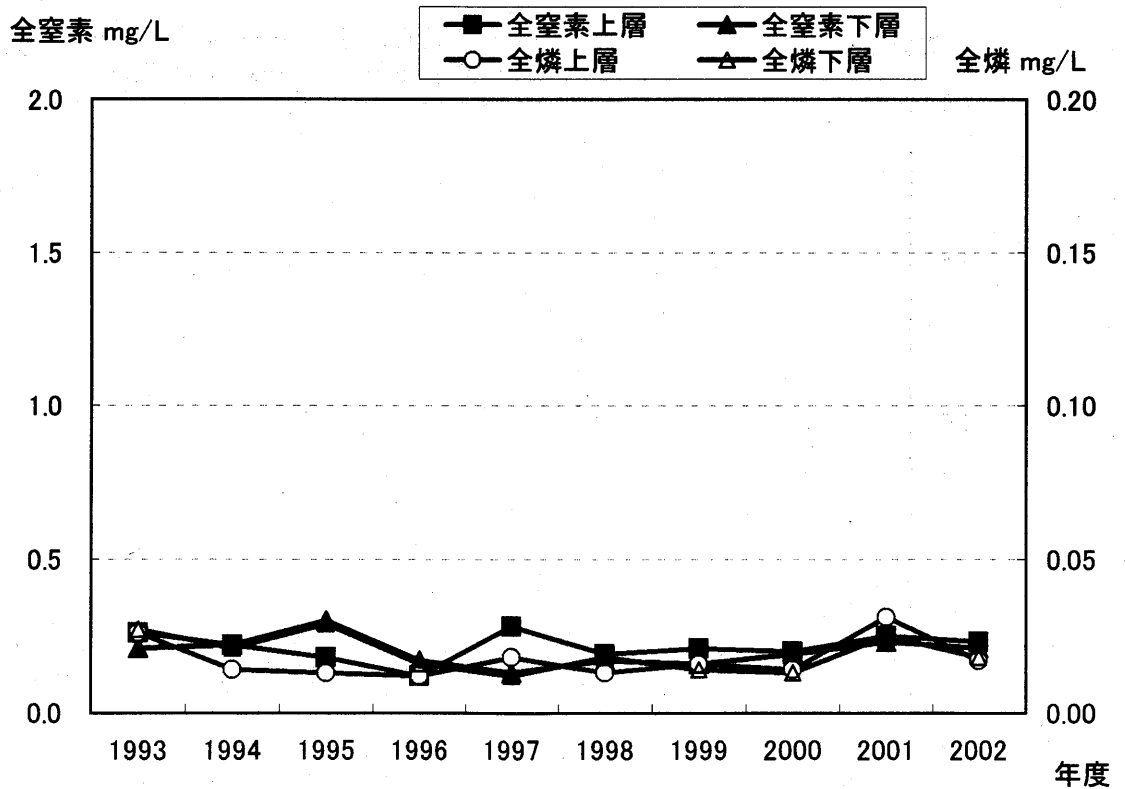
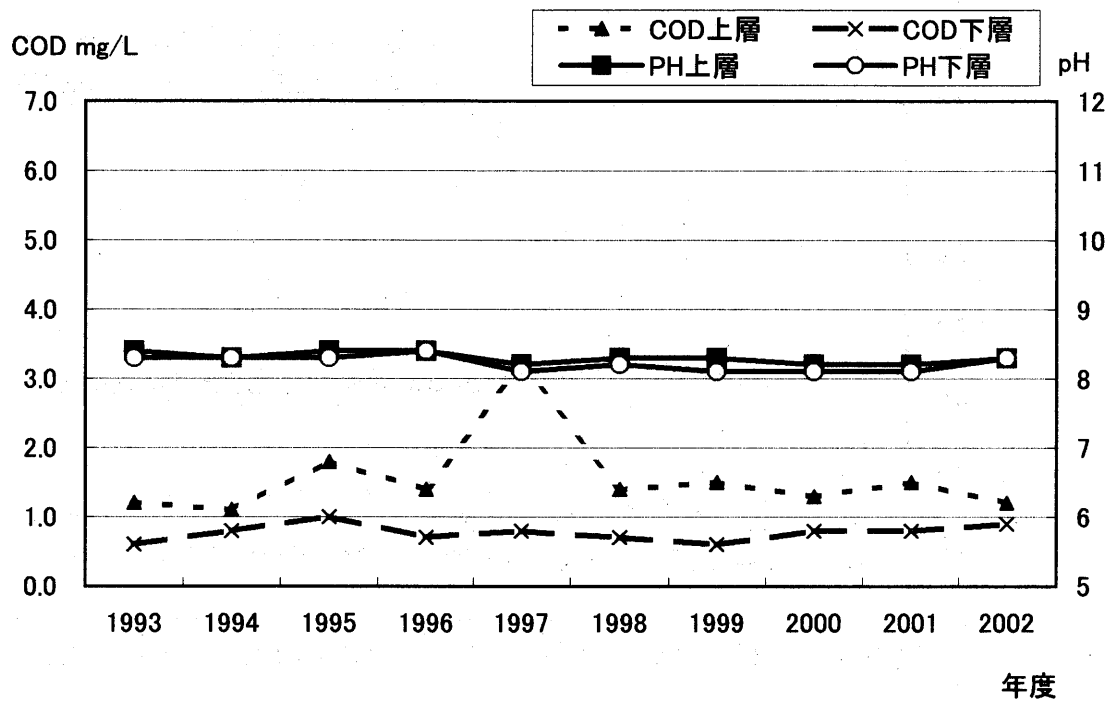


図-15 相模湾の主要地点における月別推移
(pH・COD・全窒素・全磷)

図15-1 辻堂沖

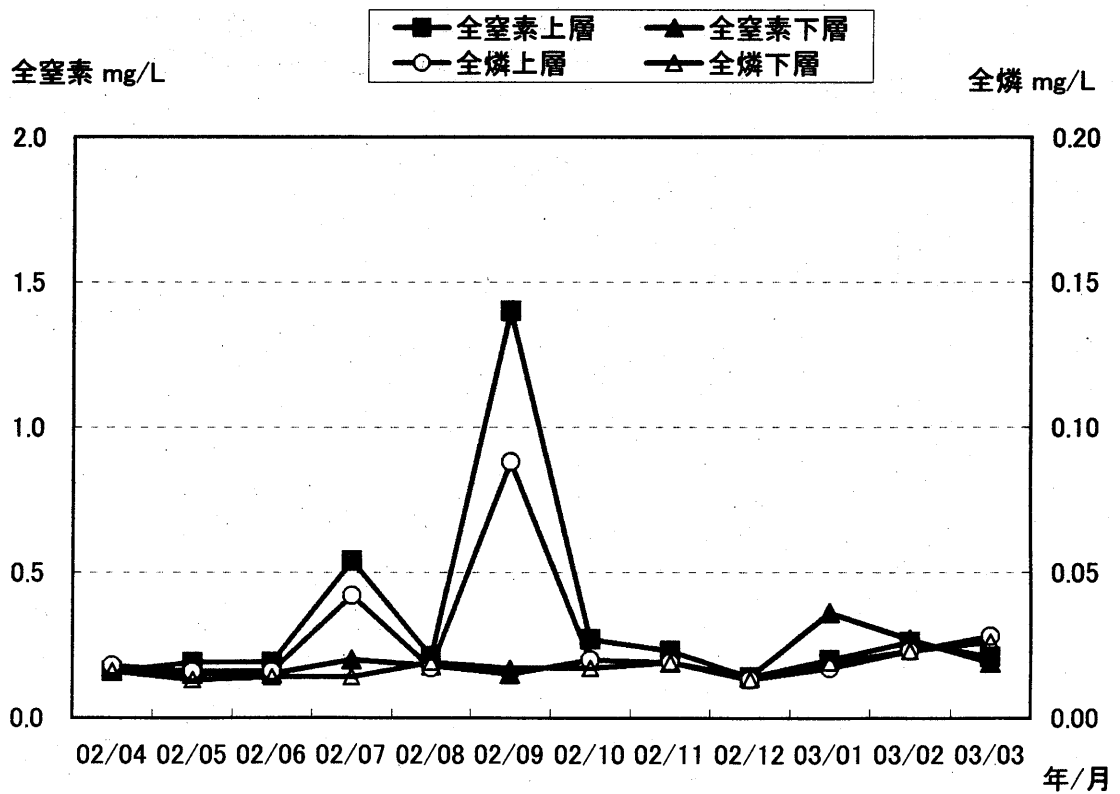
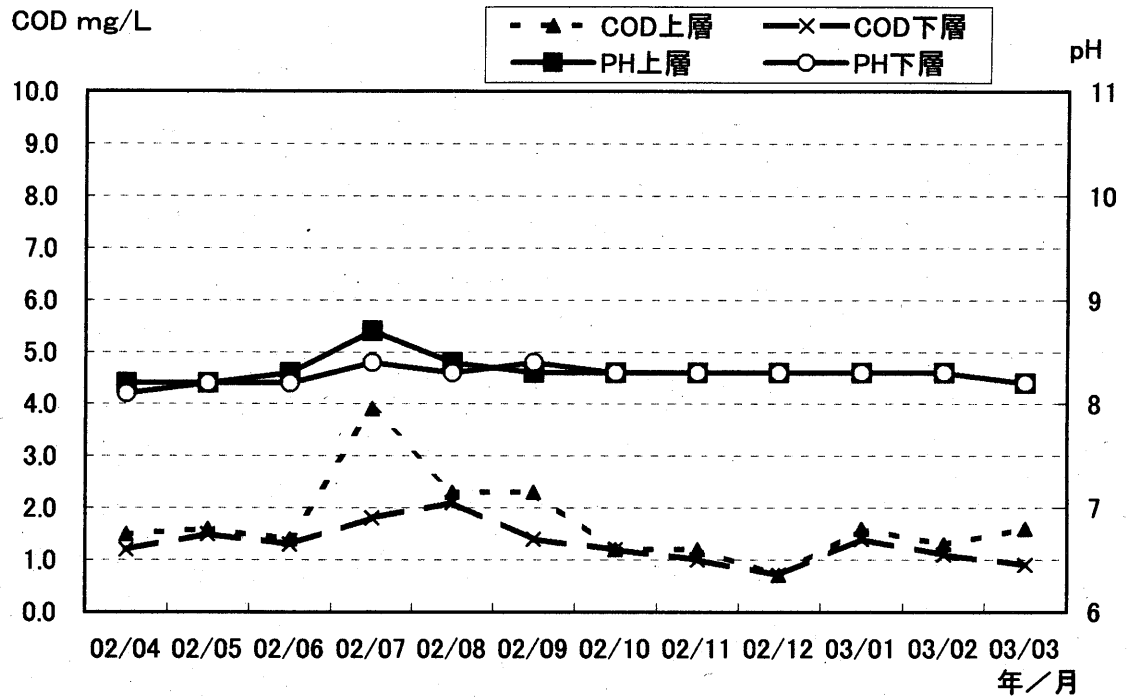


図15-2 城ヶ島西

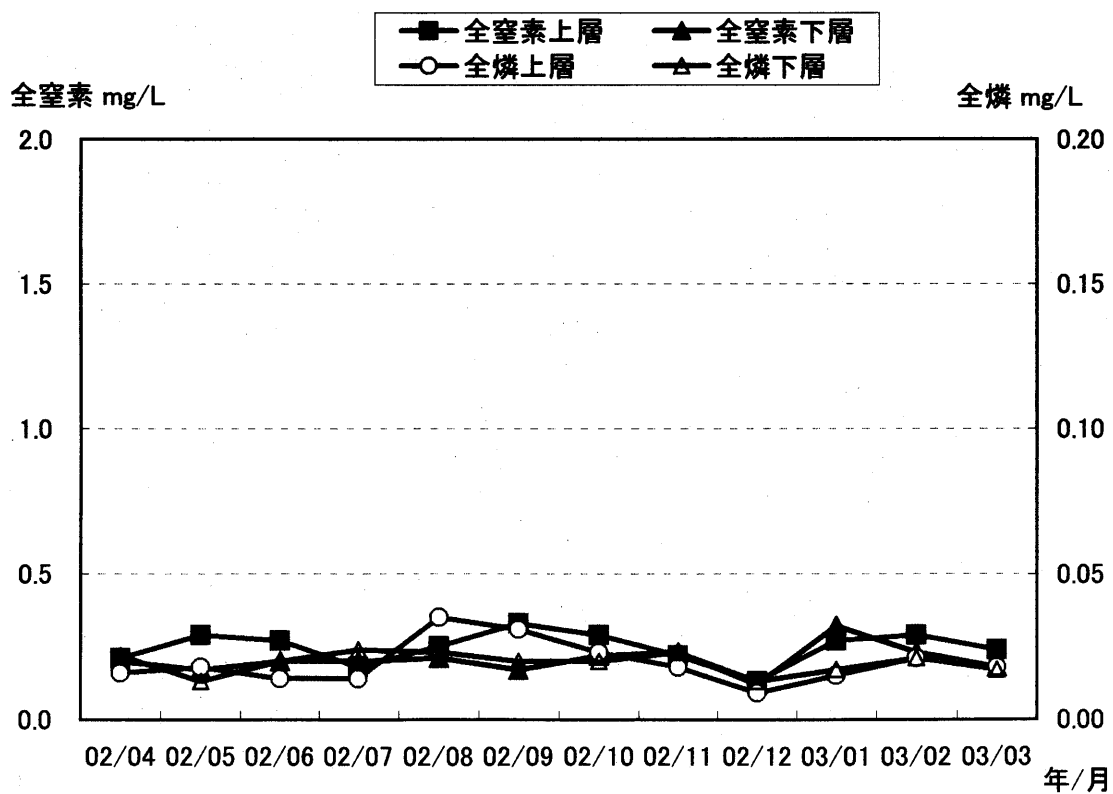
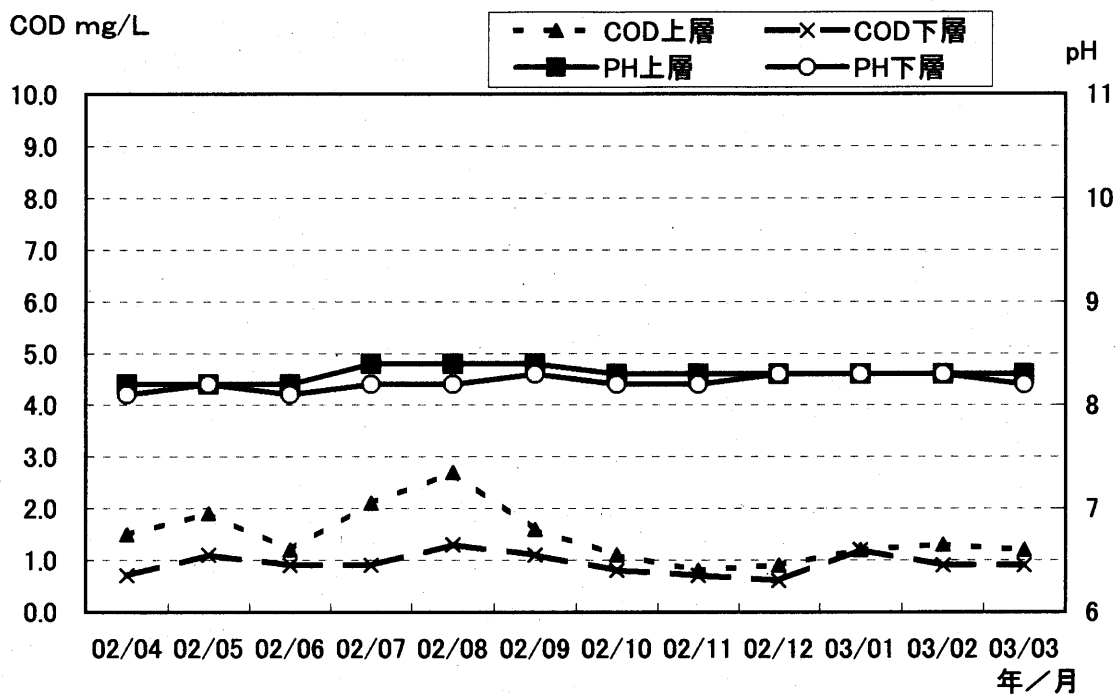


図15-3 由比ヶ浜沖

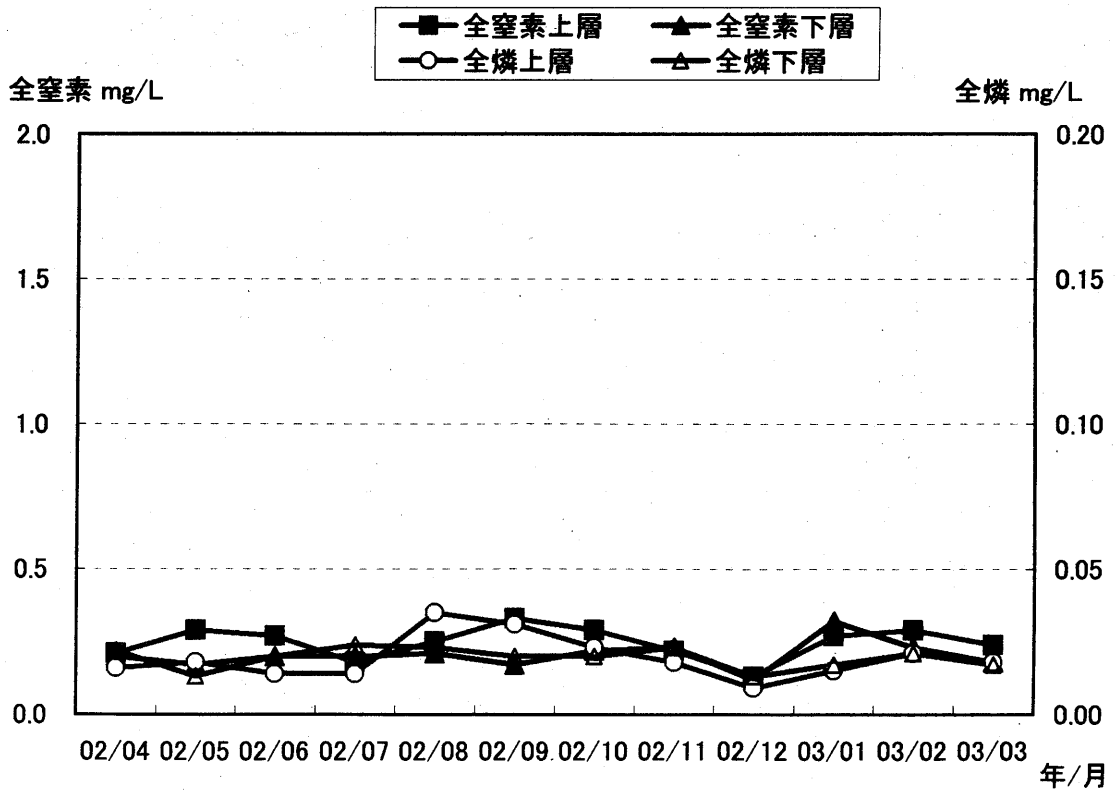
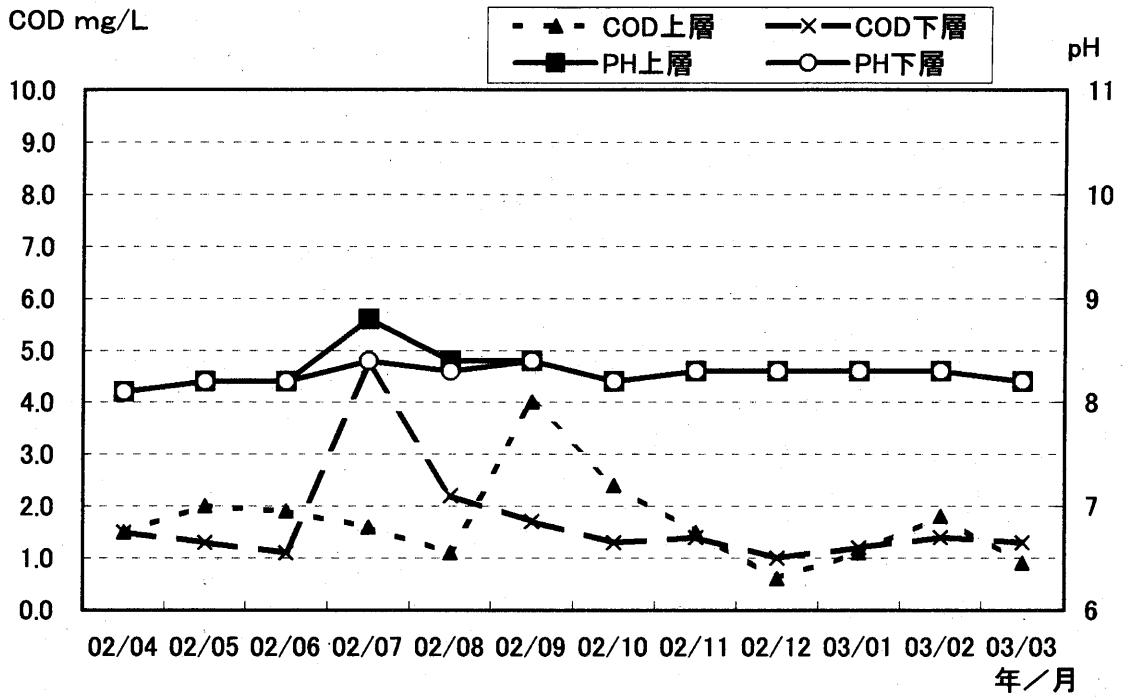


图15-4 大磯沖

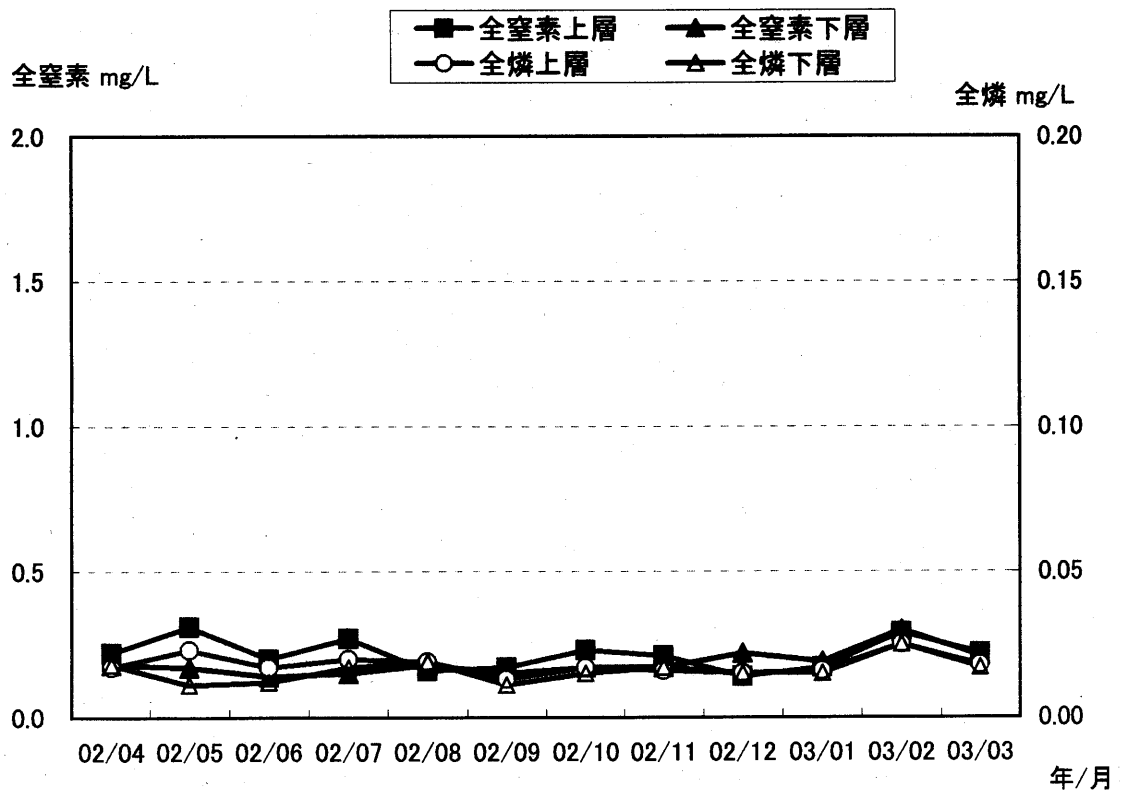
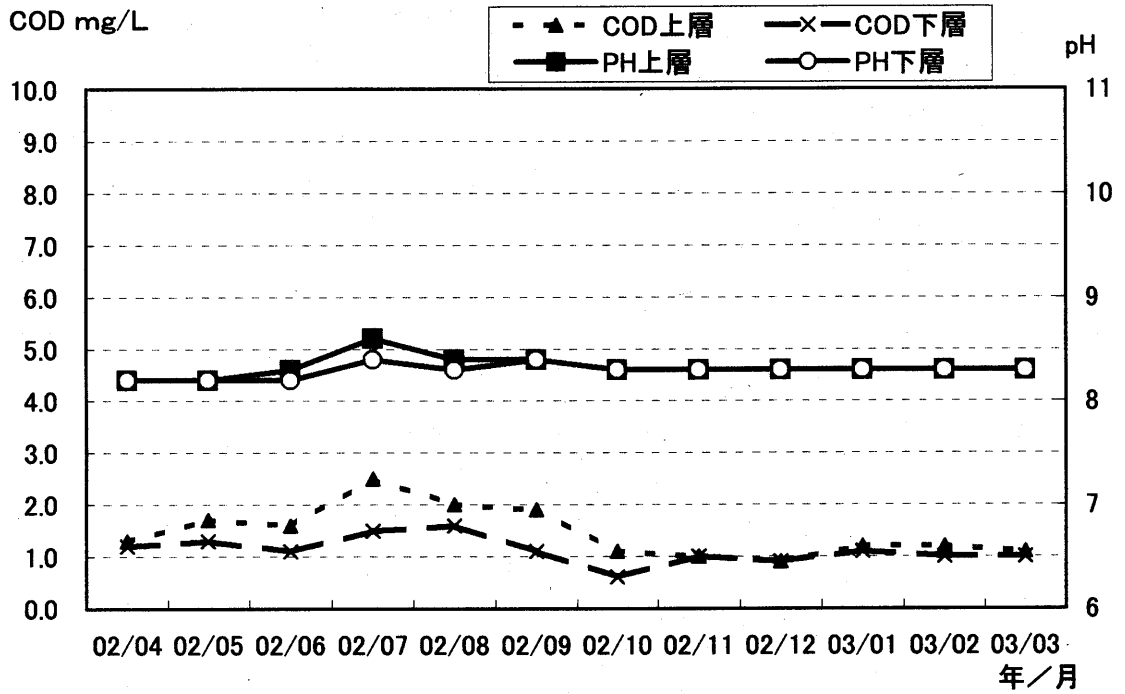


图15-5 湾央

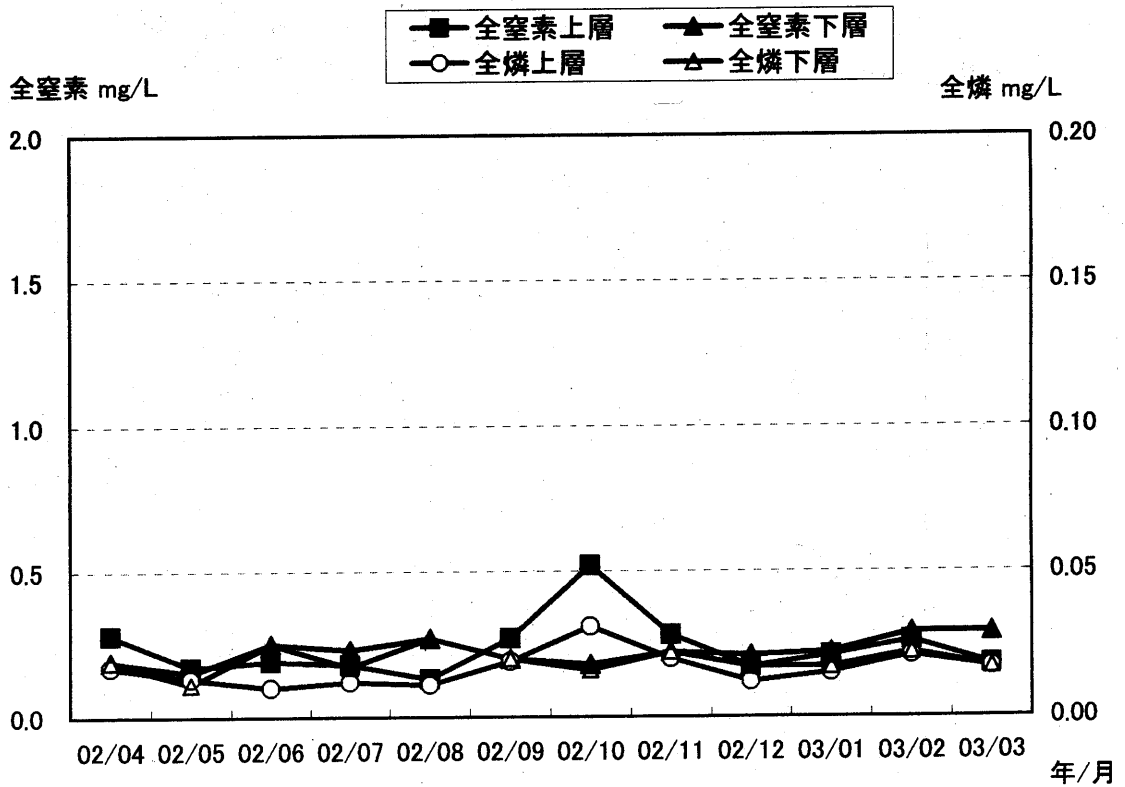
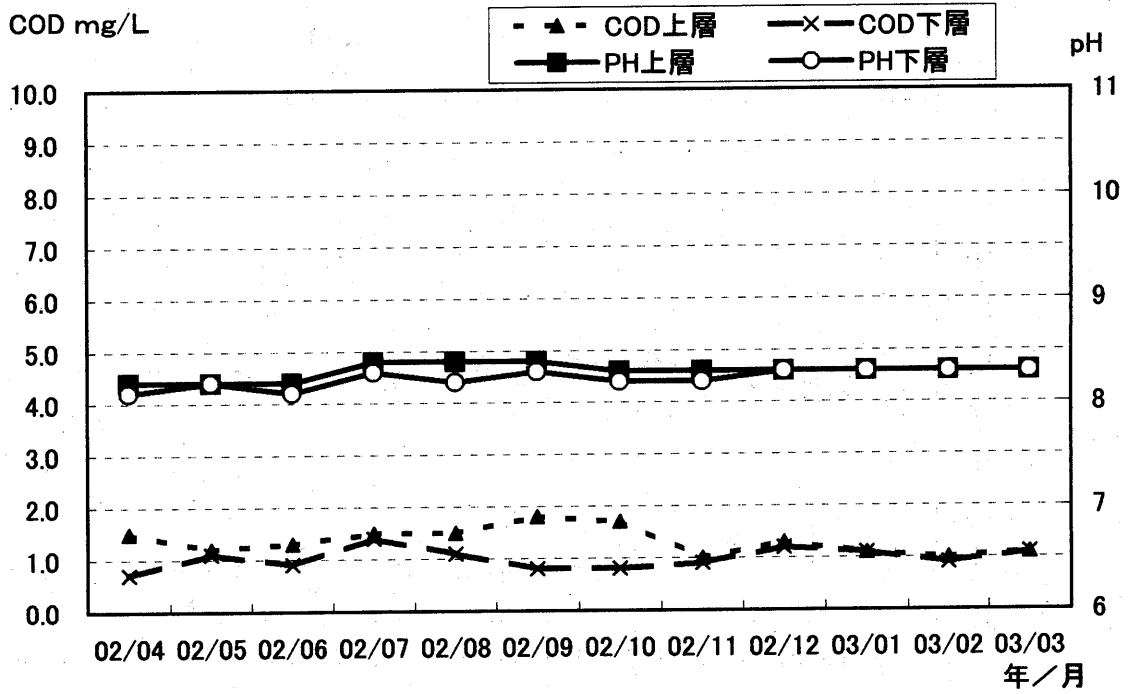


図15-6 根府川沖

