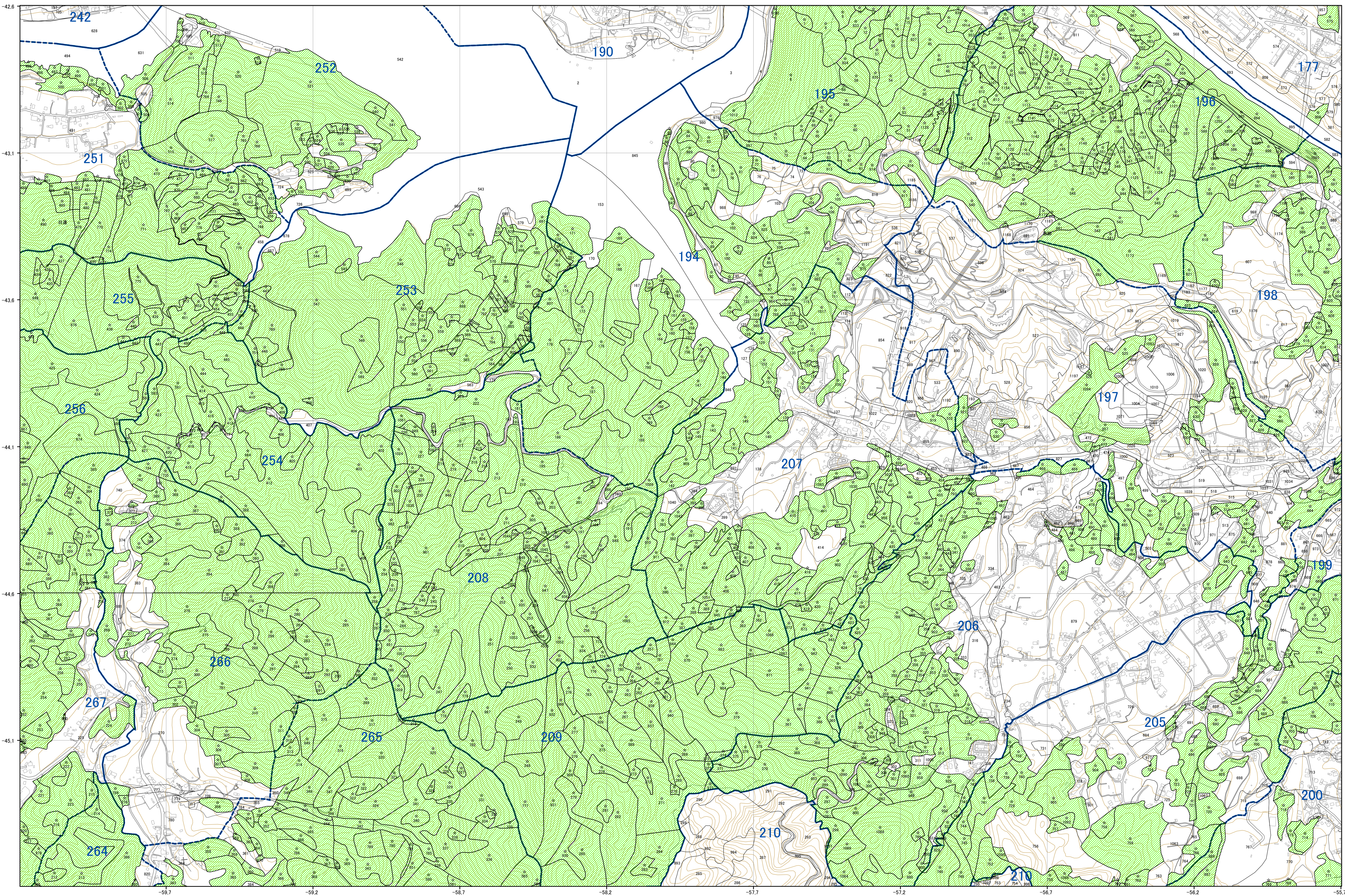
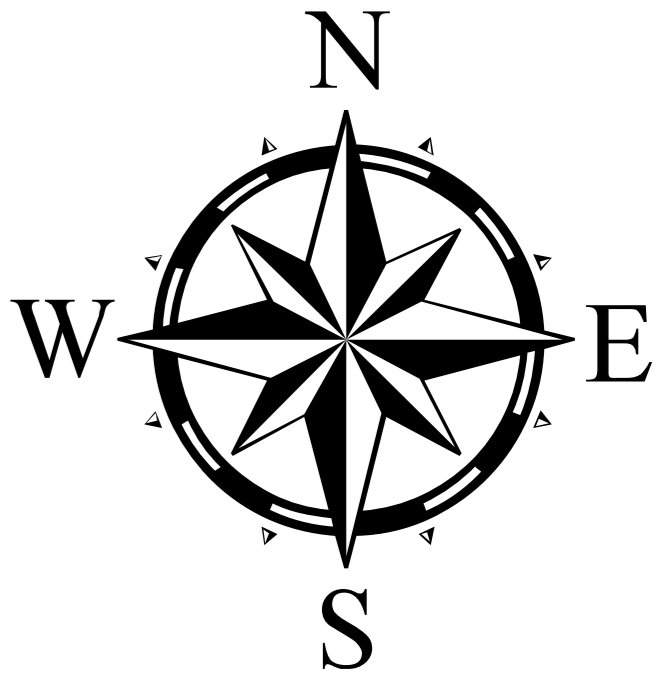


相模原市(旧相模湖町)45－33

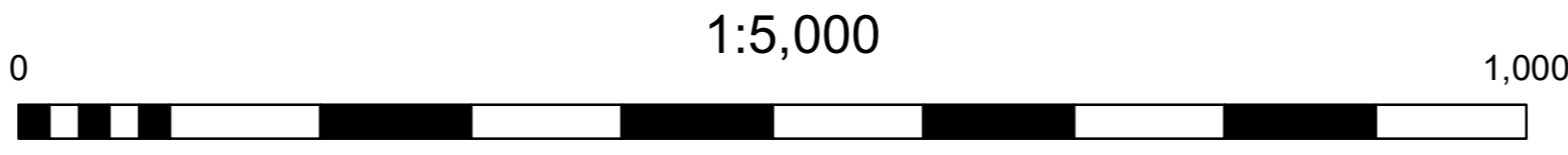
相模原市(旧相模湖町)森林計画図45－33



36	37	30							
38	39	31		32					
40	4	33	15	34	11	12			
42	43	35	18	16	19	13	01	02	
44	45	17					03	04	
20	21	22	23				14	06	07
25	26	27							09



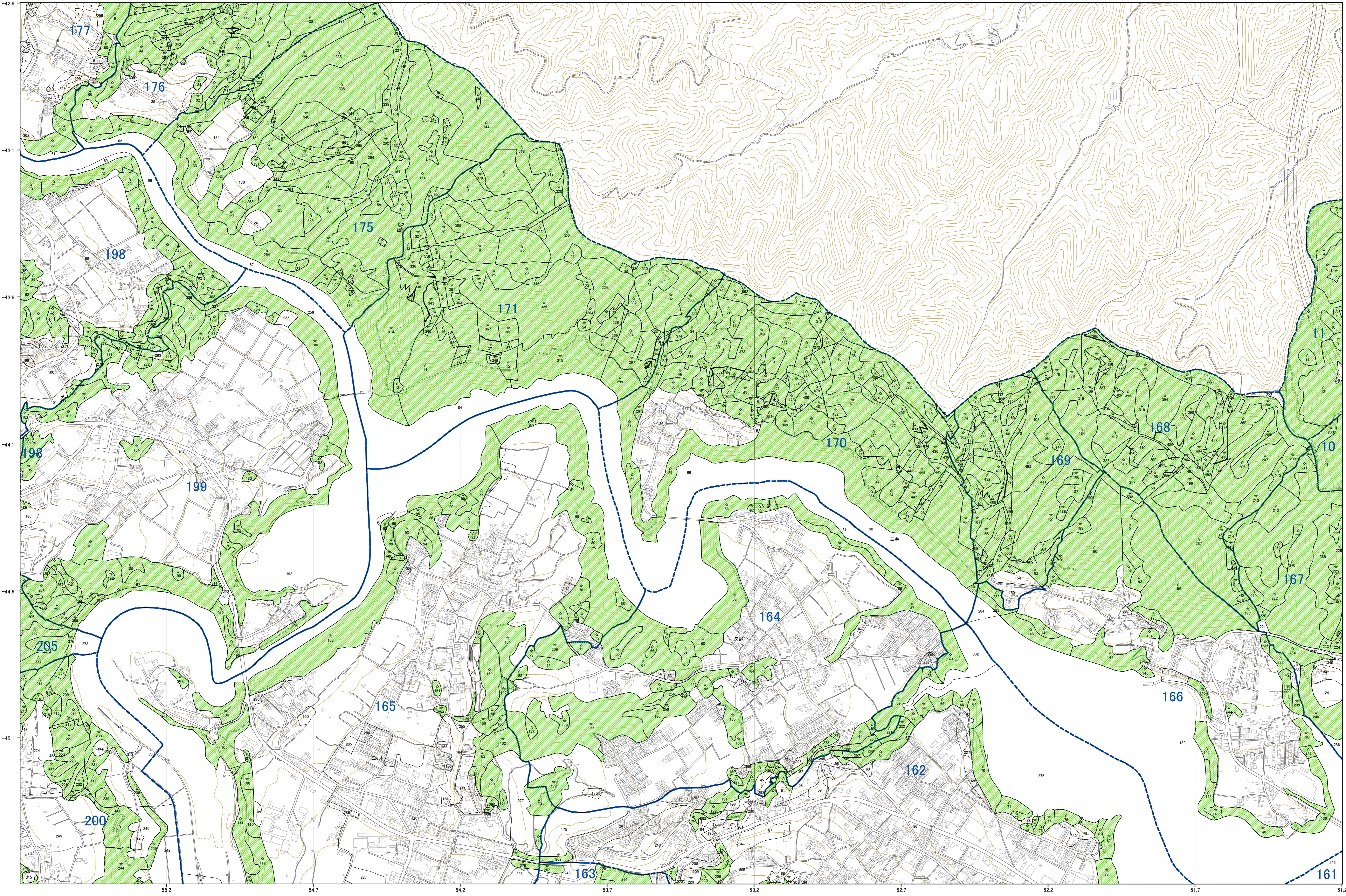
神奈川県



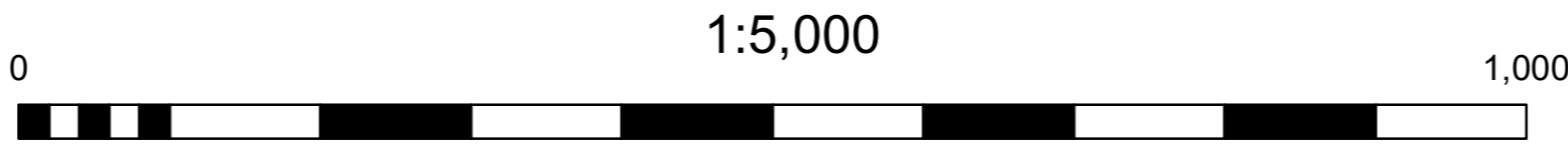
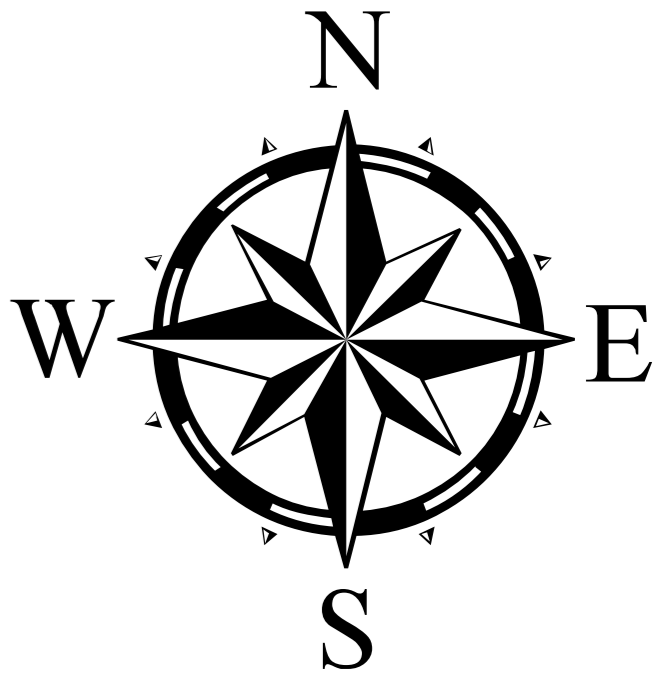
相模原市(旧相模湖町)45－33

相模原市(旧相模湖町)45－34

相模原市(旧相模湖町)森林計画図45－34



36	37	30			
38	39	31	32		
40	41	33	15 34	1	12
42	43	35	16	13	01
44	45	17	18	19	03 04
20	21	22	23	14	06 07
25	26	27			09

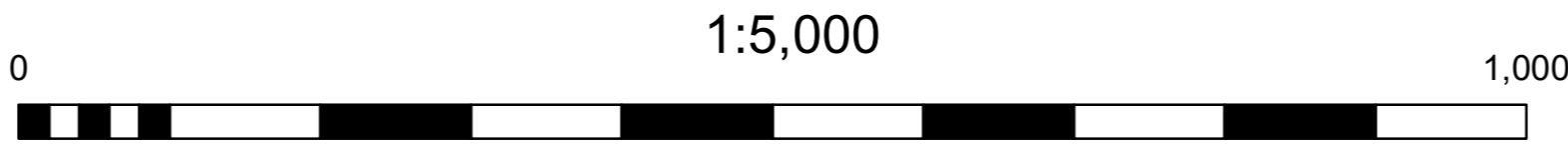
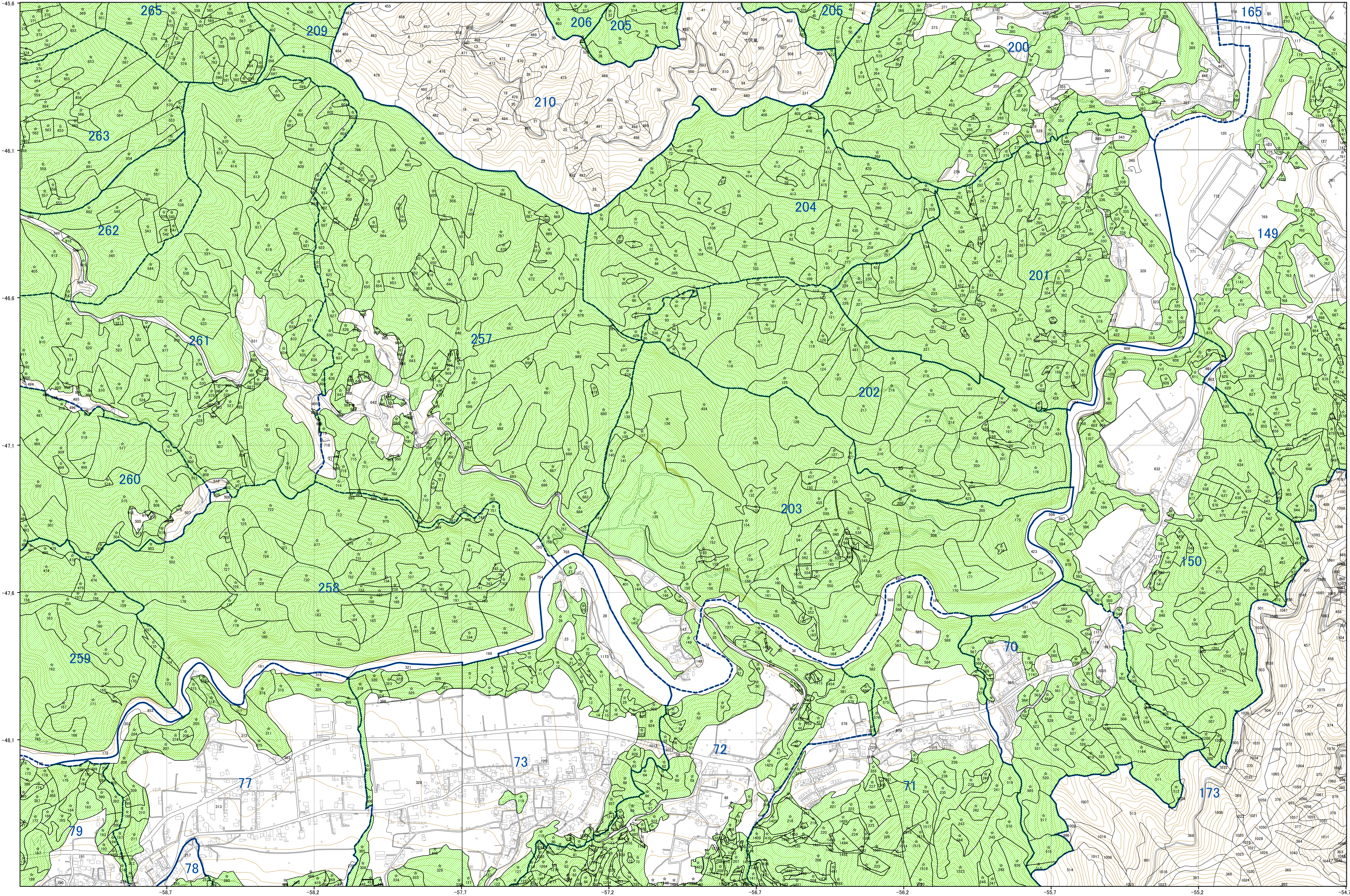


相模原市(旧相模湖町)45－34

神奈川県

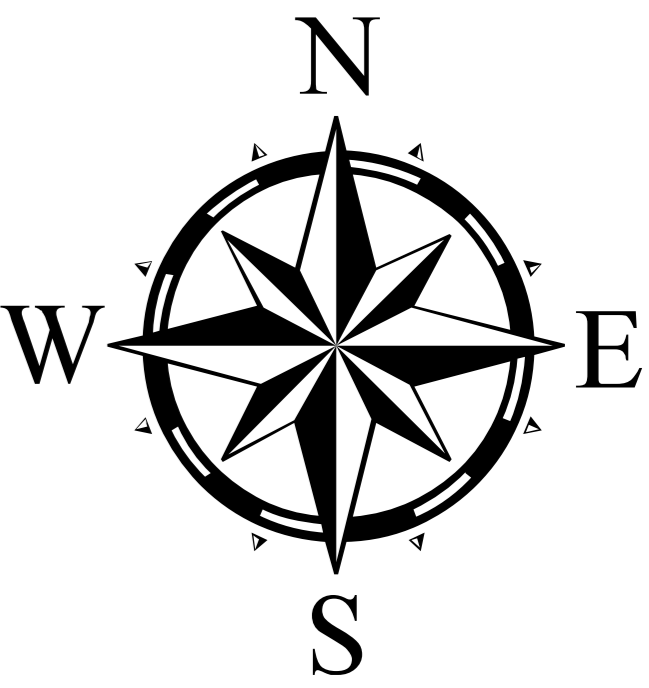
相模原市(旧相模湖町)45—35

相模原市(旧相模湖町)森林計画図45—35



相模原市(旧相模湖町)45—35

36	37	30							
38	39	31		32					
40	41	33	15	34	11	12			
42	43	35	16	19	13	01	02		
44	45	17					03	04	
20	21	22	23	14			06	07	
25	26	27						09	



神奈川県