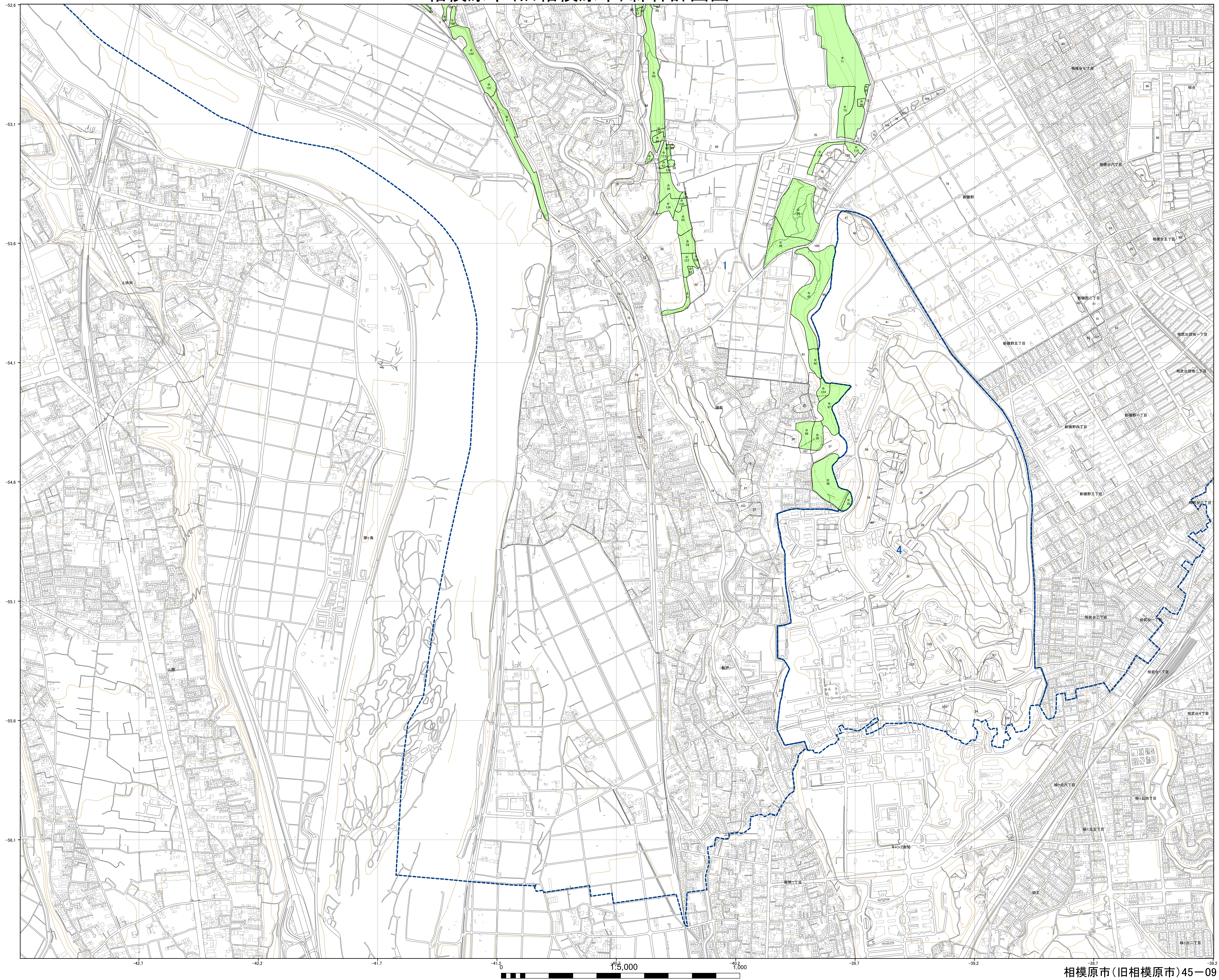
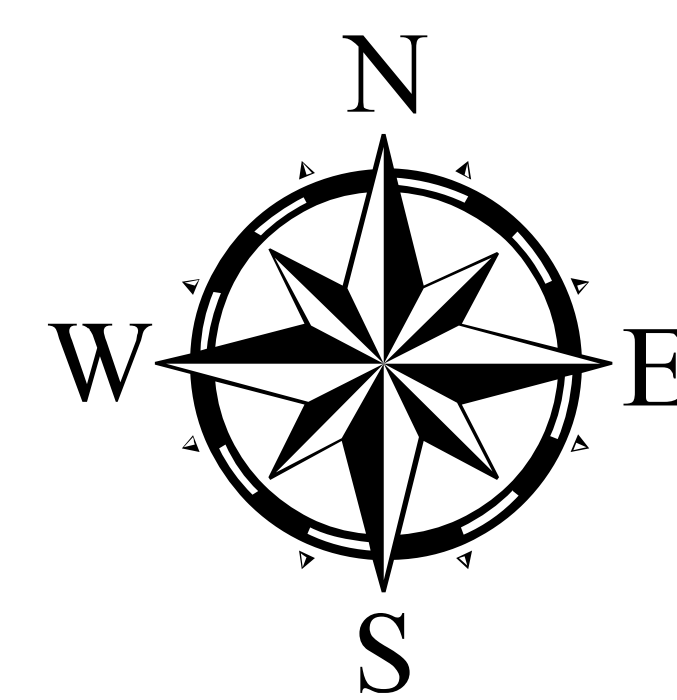


相模原市(旧相模原市)森林計画図45-09



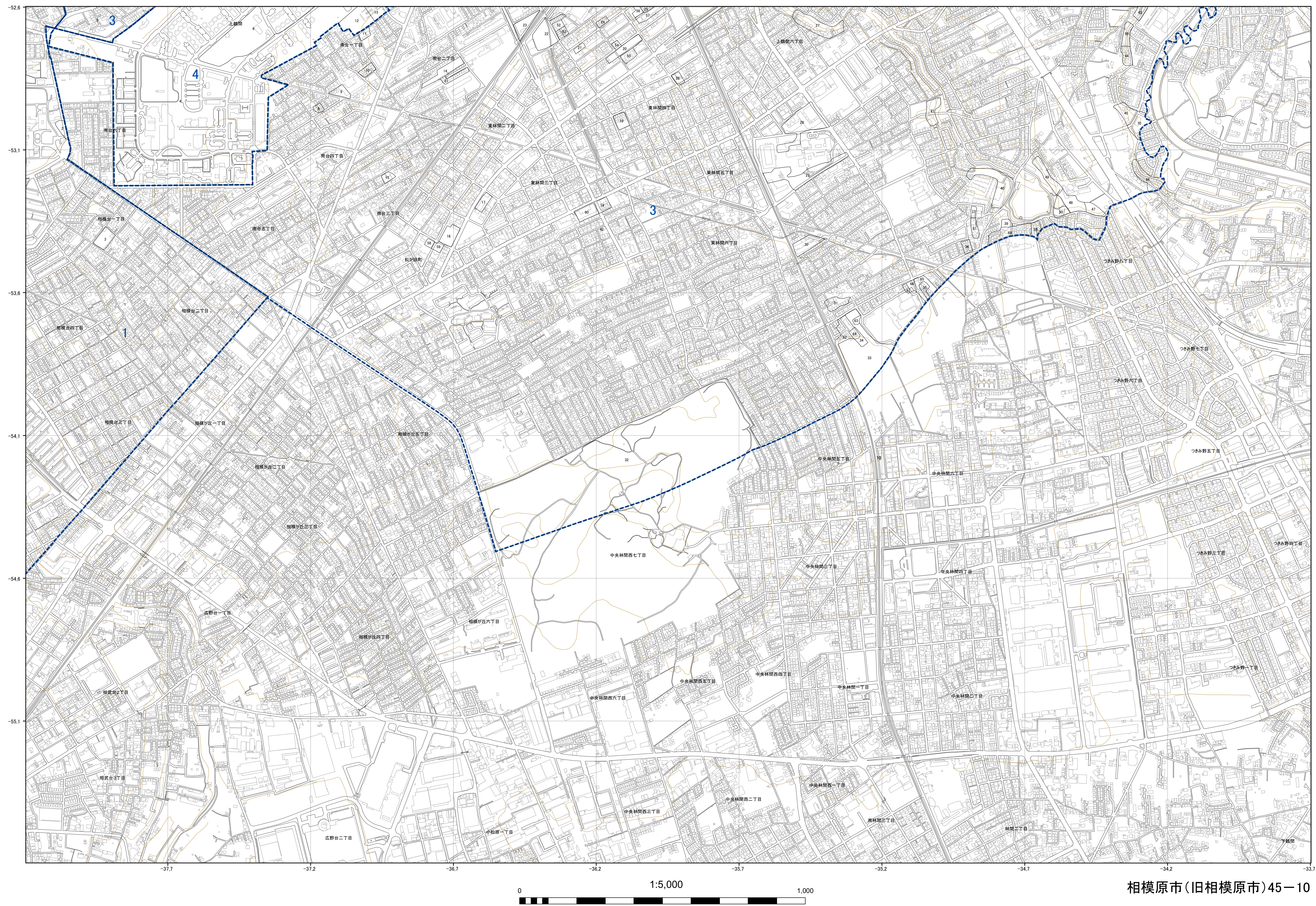
12	01	02	
13	03	04	05
14	06	07	08
		09	10





相模原市(旧相模原市)45-10

相模原市(旧相模原市)森林計画図45-10



A triangular arrangement of 10 numbered boxes (1-10) on a grid. Box 10 is highlighted with a red border.

32									
34	11		12						
			01		02				
8	19		13		03	04		05	
22	23		14		06	07		08	
27						09		10	

