

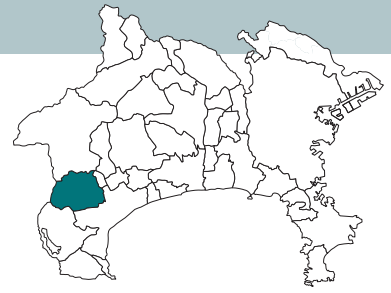
West of  
the Prefecture  
**Minami-Ashigara City**

Tourist Attraction No.

**294**

<Industrial tourism>

"An environmental creation factory" of the 21st century when I thought about the harmony with the earth, an area, the person



# Asahi Breweries Kanagawa Factory

Explanation of  
Tourist Attraction

This brewery is located in Minami-ashigara City, near Hakone and Odawara. A free tour is available from 9:30 am to 3:00 pm and takes 90 minutes. Gambrinus Hill located at the brewery's entrance was designed by Tadao Ando based on a concept of "a brewery in coexistence with forest and water." Gambrinus is the legendary folk hero said to have been the first brewer of beer. Firefly-watching parties are held at the facility's beer garden in the early summer. English, Korean, and Chinese versions of the films played during brewery tours are available and can be played depending on the status of reservations that day.

Services/Activities

Cherry blossoms can be viewed in the spring and fireflies in early summer.

Address	1223, Nuda , Minami-ashigara City, Kanagawa Prefecture
Telephone	0465 - 72 - 6270
Opening Hours	Factory tour is available from 9:30 am to 3:00 pm and takes 90 minutes. (reservation required)
Availability of Parking	Yes (free)
URL	https://www.asahibeer.co.jp/brewery/kanagawa/ English, Chinese and Korean can be selected

Recommended Season

All year

Group/Individual Mark

Group Individual

Target Regions

Europe, North America, Oceania, Asia

Access

20 mins ride by route bus or 15 mins ride by taxi from Odakyu Line "Shinmatsuda Station"  
By car: Approx. 80 minutes from central Tokyo / Haneda Airport via the Metropolitan Expressway.

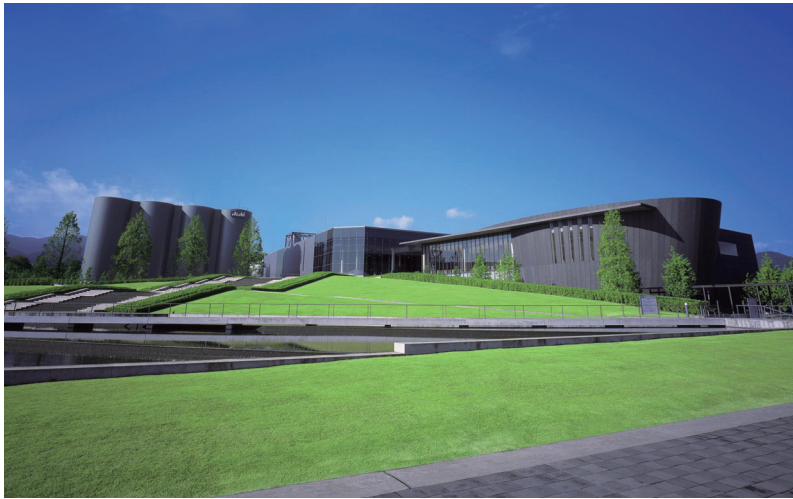
Model Route No. **94** Specific Model Route Details  
Group, Car rental

Any station in central Tokyo===Asahi Breweries Kanagawa Factory <factory tour/90 mins> === (40 mins)===Odawara Hayakawa Fishing Port <lunch/60 mins> ===(60 mins)===★free time in Enoshima <40 mins>...(17 mins walk)··· Enoden Line [Enoshima Station]+++ (23 mins)+++Enoden Line [Kamakura Station]===Any station in central Tokyo

Start Central Tokyo

Goal Central Tokyo

Time Required 7 hours 30 mins



There is a barbecue restaurant and a commercial museum adjacent to the brewery.

Nearby Sightseeing Spot

## Odawara Castle



Odawara Castle was the residence of the Hojo Clan, which ruled Kanto during the Warring States period. It is widely known for the plum trees, cherry blossom, hydrangea, and other flowers within the park. The exhibits were also recently renewed after the completion of major renovations of the castle keep.

## Enoshima



Shonan Nagisa Park Co.,Ltd. (Photo)

With Mt. Fuji to the west, and Sagami Bay to the south, Enoshima has been a famous scenic spot since the Edo Period. Mt. Fuji glows red as the sun sets. It's an amazing highlight! The approach to Enoshima Shrine is crowded with restaurants and souvenir shops. Just by taking a walk is fun.

