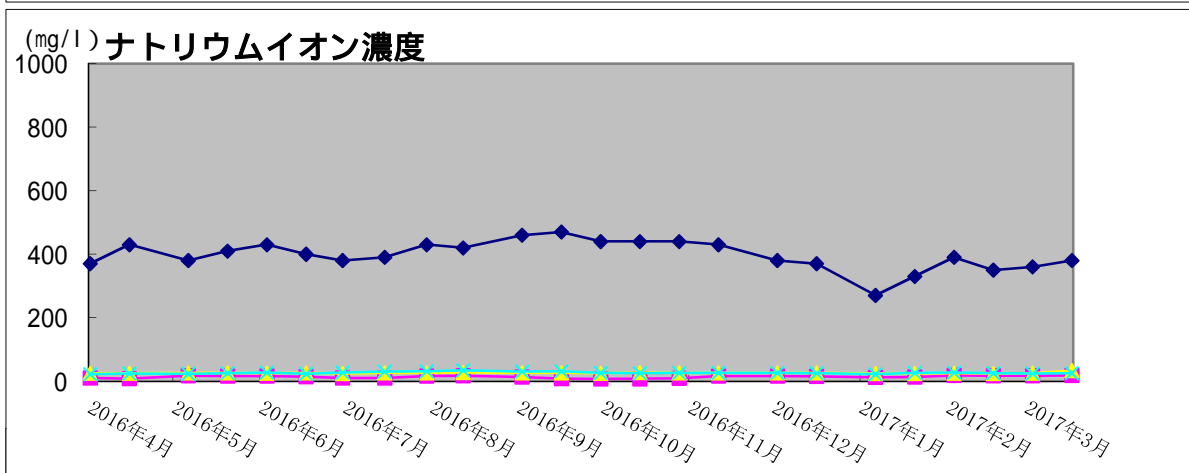
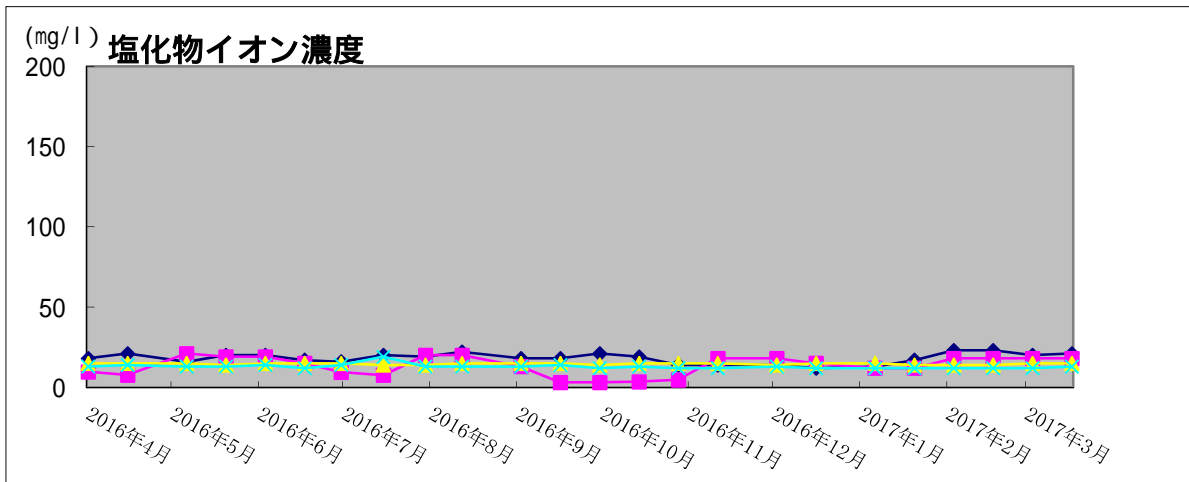
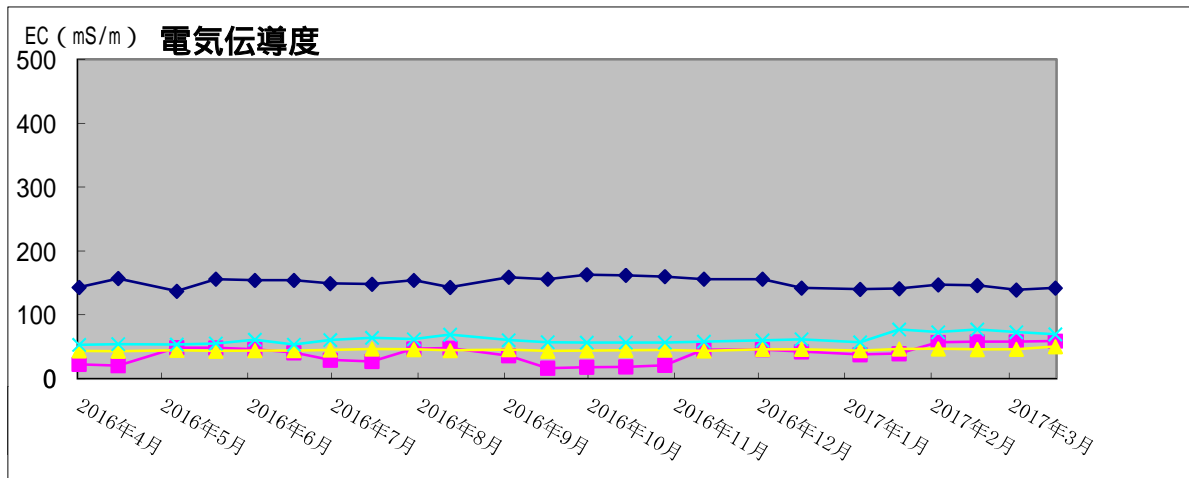
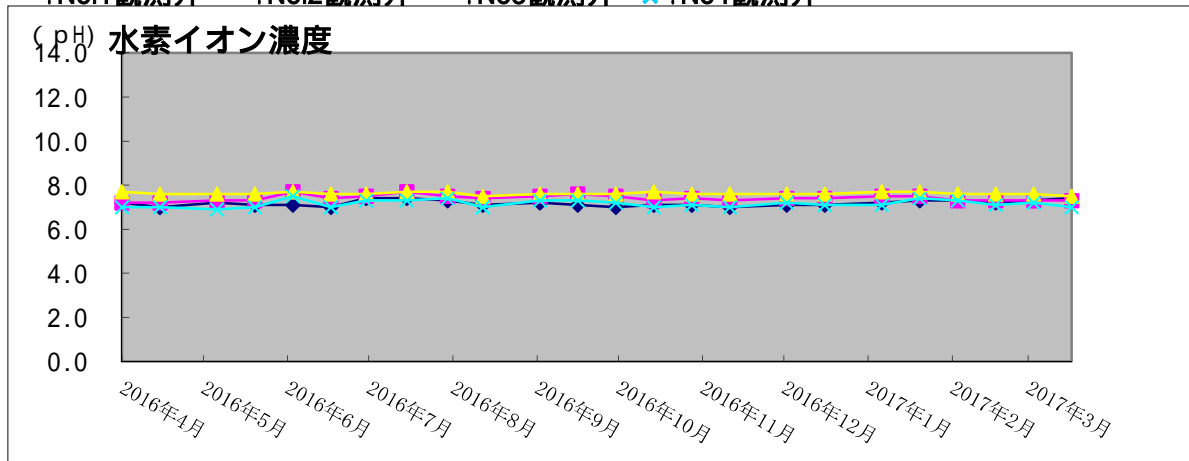


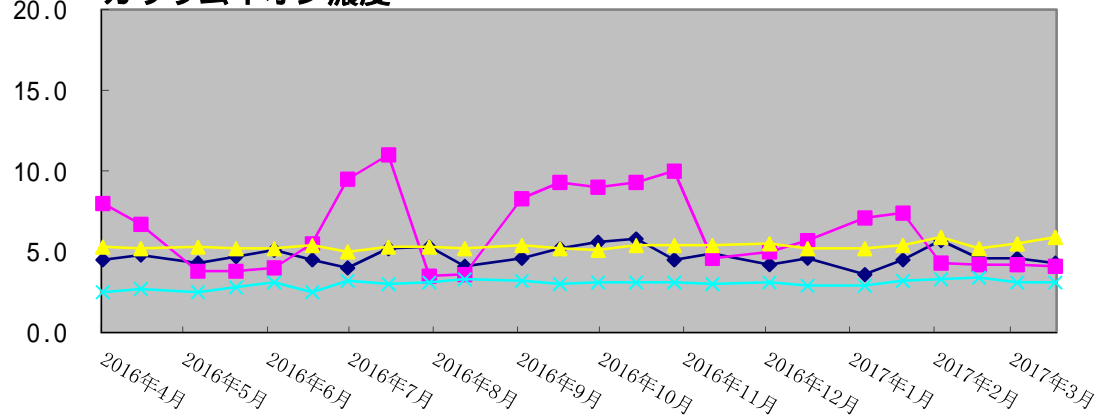
観測井の水質調査結果 (平成29年3月22日現在)

:No.1観測井 :No.2観測井 :No.3観測井 ×:No.4観測井

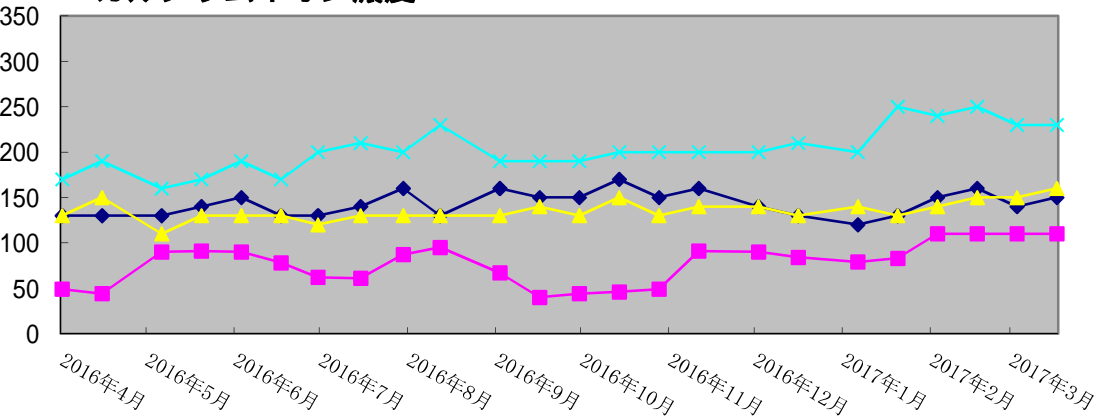


○:No.1観測井 △:No.2観測井 □:No.3観測井 ×:No.4観測井

(mg/l) カリウムイオン濃度



(mg/l) カルシウムイオン濃度



(mg/l) マグネシウムイオン濃度

