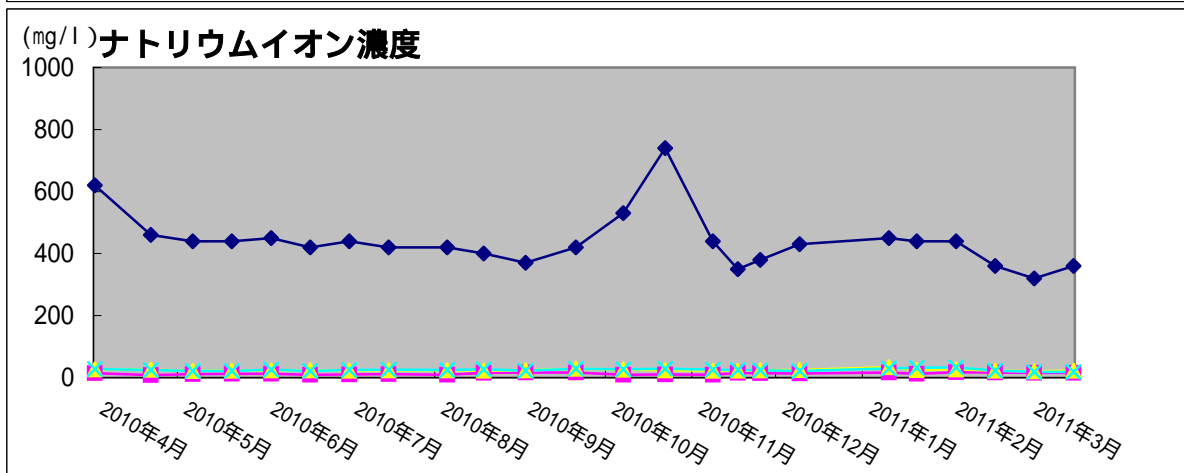
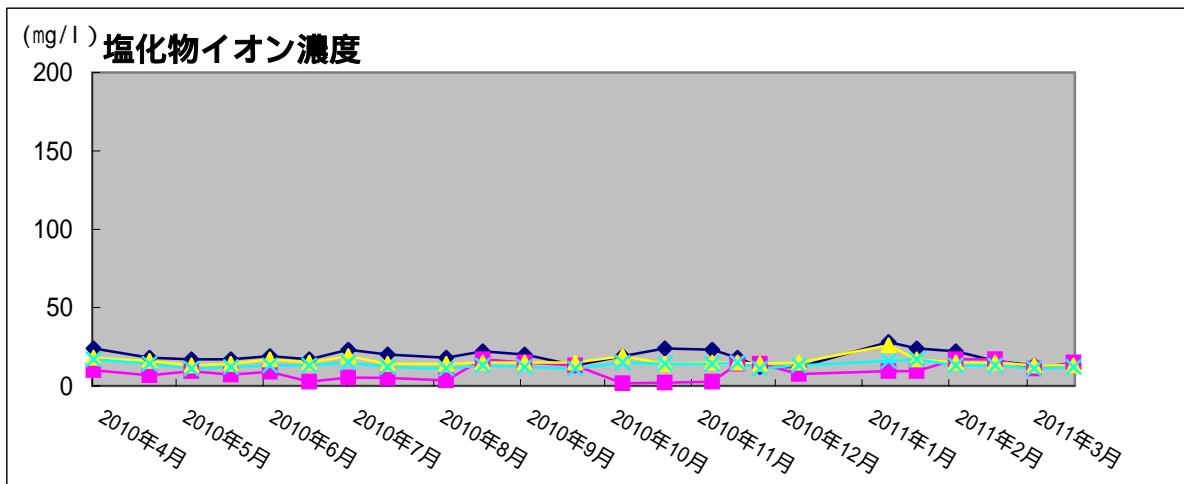
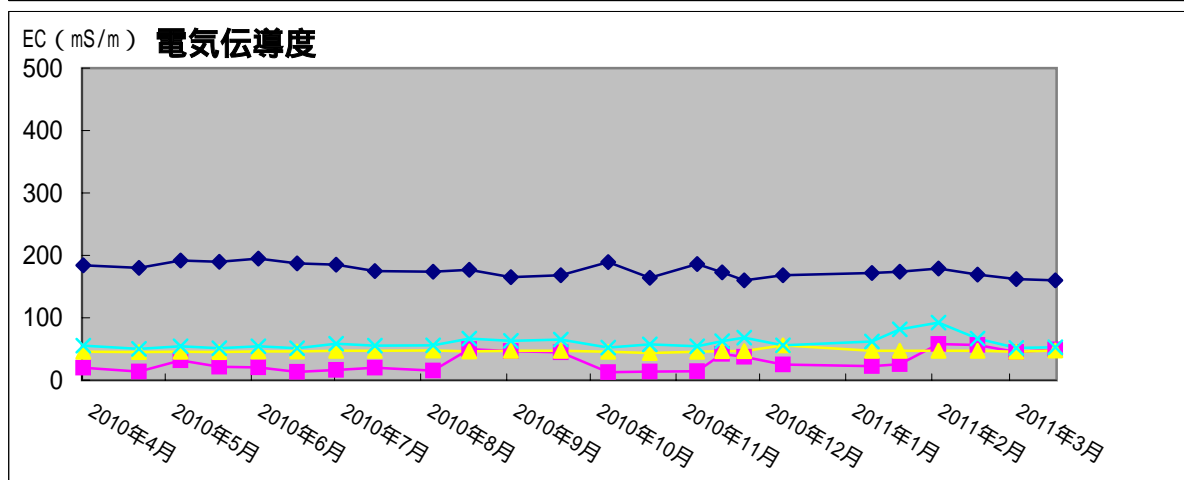
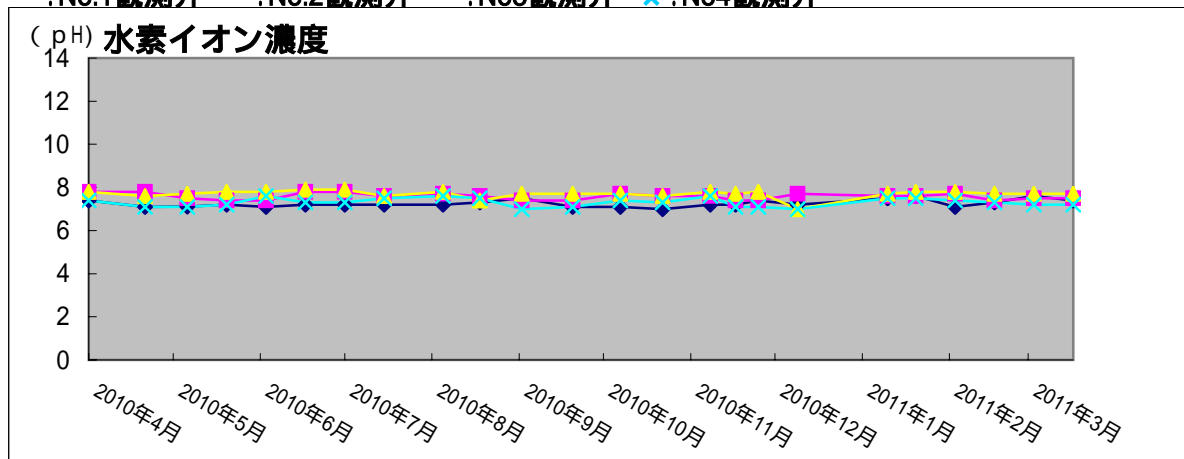


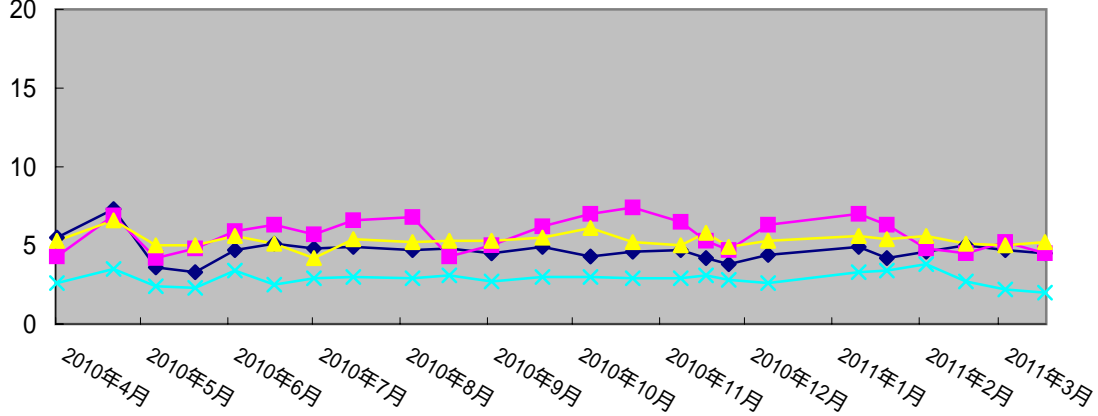
# 観測井の水質調査結果(平成23年3月24日現在)

:No.1観測井    :No.2観測井    :No.3観測井    x :No.4観測井

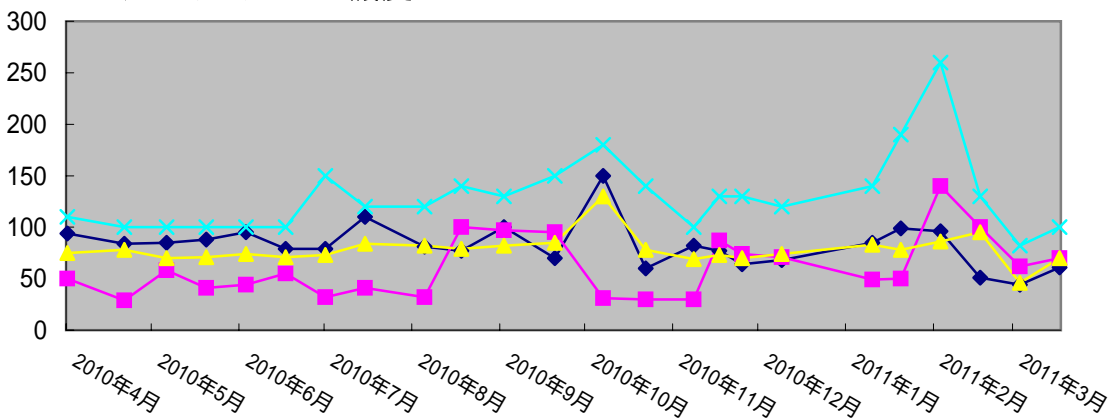


:No.1観測井    :No.2観測井    :No.3観測井    ×:No.4観測井

(mg/l) カリウムイオン濃度



(mg/l) カルシウムイオン濃度



(mg/l) マグネシウムイオン濃度

