



神奈川県

KANAGAWA

New Kanagawa Grand Design

Basic Concept / Implementation Plan

<Digest Version>



March 2024

Perspective of Review of the Basic Concept

The COVID-19 pandemic and destabilization of the international situation

▶ **Coping with the uncertainty surrounding living** >>> **Future Vision of Kanagawa (1)**

More seriously declining birthrate and aging population, and arrival of a seriously depopulating society

▶ **Coping with declining birthrate, aging population, and depopulation** >>> **Future Vision of Kanagawa (2)**

Accelerated digitalization and decarbonization trends

▶ **Coping with changes surrounding communities and industries** >>> **Future Vision of Kanagawa (3)**

To Citizens

The Kanagawa Prefectural Government (K.P.G.) has decided to formulate the comprehensive plan "New Kanagawa Grand Design," to cope with various changes and challenges, such as the super-aged society and full-fledged declining population, and the increasing uncertainty including the spread of infectious diseases, natural disasters, and the destabilizing international situation.

We will aim to realize the Future Visions in the Basic Concept by bringing together diverse bodies' strengths while sharing the principle and purpose of the Plan with prefectural residents. We will also aim to realize a society where people can live with a sense of security by utilizing digital power, which has been making remarkable progress, and by relieving concern with prefectural residents' point of view. I greatly appreciate for your kind understanding and continued cooperation.



Yuji Kuroiwa,
Governor of Kanagawa
Prefecture

March 2024

Basic Concept (Target year: 2040)

Chapter 1. Basic Objectives

Basic Principle: Realizing "Kanagawa - a magnet for vibrant inochi (lives)"

"Kanagawa - a magnet for vibrant inochi" means that citizens can realize the joy of life and feel happy to be born or to live a long life, and that Kanagawa has magnetic power to attract people and things and is full of charm that makes people want to live there, visit it many times, and be connected with it.

- Future Vision of Kanagawa**
- (1) **People-friendly Kanagawa, where everyone can live with a sense of security**
 - (2) **Kanagawa, where everyone can achieve one's potential and play an active role**
 - (3) **Kanagawa, which can cope with changes and develop sustainably**

Chapter 2. Basic Direction of Policies

1 Basic direction of policies toward the target year of 2040

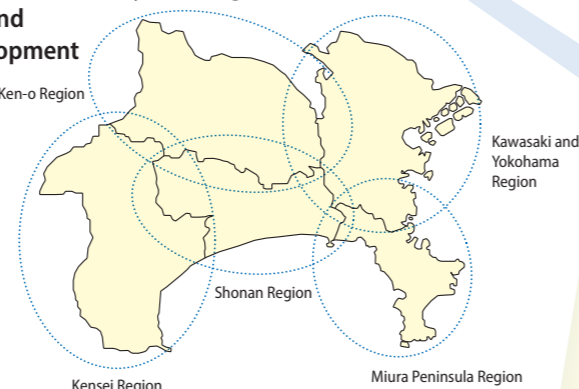
- (1) We will create a society where people can live with hope for the future.
- (2) We will develop cities that can be chosen from home and abroad and develop sustainably.
- (3) We will fulfill a role in global challenges.
- (4) We will create a society where everyone can live in their own way.
- (5) We will create a safe, secure, and sustainable society.
- (6) We will strengthen collaboration and partnerships with diverse bearers.
- (7) We will fulfill the responsibility and role of a broader-based local government in cooperation and coordination with municipalities.

2 Basic direction by policy field

- (1) Children, Youth, and Education
- (2) Health and Welfare
- (3) Industry and Labor
- (4) Environment and Energy
- (5) Society to Live in Harmony and Prefectural Residents' Living
- (6) Crisis Management and Security of Living
- (7) Prefectural Land and Community Development

3 Basic direction of community development

- Five community policy regions
- Kawasaki and Yokohama Region
 - Miura Peninsula Region
 - Ken-o Region
 - Shonan Region
 - Kensei Region



Implementation Plan (FY2024-27)

What to aim at in four years

"A people-oriented society through a digital government with prefectural residents' point of view"

● Projects (priority measures)

Theme I	Kanagawa, where people can live with hope
PJ 1	Children and youth
PJ 2	Education
PJ 3	ME-BYO and healthy longevity
PJ 4	Culture and sports
PJ 5	Tourism and community revitalization
Theme II	Kanagawa, which can develop sustainably
PJ 6	Economy and labor
PJ 7	Agriculture, forestry, and fisheries
PJ 8	Decarbonization and environment
Theme III	Kanagawa, where people can live in their own way
PJ 9	Neediness
PJ10	Society to live in harmony
Theme IV	Kanagawa, where people can live with a sense of security
PJ11	Security of living
PJ12	Crisis management
Theme V	Creating a basis to support Kanagawa
PJ13	Urban infrastructure

● Kanagawa's Strategies

- Efforts to implement the Projects further compositely
- 1 Promotion of Healthcare New Frontier Policy
 - 2 An era when people can live a vibrant life to 100
 - 3 Society coexisting with robots
 - 4 Promotion of Magnet Culture
 - 5 Promotion of global strategy

● Efforts to develop communities, related to the Projects

● New Kanagawa Grand Design and SDGs

● Key measures (Overview of the prefecture's policies)

Systematizing programs to be steadily implemented by the K.P.G., including those in the Projects, in line with the "basic direction by policy field" of the Basic Concept

● Promotion of the Plan

Projects

Theme I Kanagawa, where people can live with hope

Amid the progress in declining birthrate and aging population as well as the clearly declining population even in Kanagawa, we will work to provide parenting support to allow parents to have and raise children with peace of mind as well as child and youth support. We will also promote the development of human resources that can adapt to a rapidly changing society and the development of communities that attract people.

In addition, aiming at a society where people can live a mentally and physically healthy and rich life, we will promote efforts to extend health expectancy by improving ME-BYO and to familiarize everyone with culture and sports.



PJ 1 Children and youth	Kanagawa, where children and youth can imagine a bright future <ul style="list-style-type: none"> A Creating a society where people can raise children with hope B Creating a society where children and youth can live with hope
PJ 2 Education	Development of flexible and independent human resources that can adapt to a rapidly changing society <ul style="list-style-type: none"> A School education to foster the capacity for compassion, the strength to survive independently, and the ability to contribute to society B Development of education environment that makes it possible to learn with peace of mind and comfort
PJ 3 ME-BYO and healthy longevity	A society where people can live a vibrant life by improving ME-BYO and enhancing medical and nursing care <ul style="list-style-type: none"> A Extension of health expectancy by improving ME-BYO B Provision of sustainable and high-quality health and medical care even in a depopulating and super-aging society C Deepening the community-based integrated care system
PJ 4 Culture and sports	A vibrant community where people can live a mentally and physically healthy and rich life <ul style="list-style-type: none"> A Promotion of the effort to familiarize everyone with culture and art B Creating a society where everyone can get familiar with sports
PJ 5 Tourism and community revitalization	Development of attractive communities by utilizing Kanagawa's local resources <ul style="list-style-type: none"> A Promotion of tourism B Promotion of the effort to create a flow of people in communities C Promotion of immigration and settlement

Theme II Kanagawa, which can develop sustainably

With a great change in industrial structure expected due to acceleration of digitalization and other factors, we will promote efforts toward sustainable development of industries, agriculture, forestry, and fisheries in the prefecture, and aim to realize a decarbonized society in order to prevent global warming.



PJ 6 Economy and labor	Revitalizing industries in the prefecture and promoting the activity of diverse human resources <ul style="list-style-type: none"> A Strengthening industrial competitiveness B Improvement of the profitability of SMEs C Promoting the activity of diverse human resources
PJ 7 Agriculture, forestry, and fisheries	Realization of sustainable agriculture, forestry, and fisheries by promoting local production for local consumption <ul style="list-style-type: none"> A Construction of stable food production infrastructure B Expanding the usage of safe, secure, and appealing agricultural, forestry, and fishery products produced in the prefecture
PJ 8 Decarbonization and environment	Realization of a decarbonized society to protect lives and the environment for the future <ul style="list-style-type: none"> A Supporting efforts made by diverse bodies B Efforts led by the K.P.G.

Theme III Kanagawa, where people can live in their own way

Amid the growing uncertainty of the future, we will shed light on latent challenges in society, such as economic poverty and social isolation, in advance, and make preparations to minimize the effects on prefectural residents' living. We will also promote efforts to realize a community where everyone can live in their own way, regardless of disability status, nationality, or gender*.

*"Gender" is not limited to male or female but includes all gender identities.



PJ 9 Neediness	Developing communities where everyone can have their own dreams and hopes <ul style="list-style-type: none"> A Development of bases and systems to find difficulties faced by children and youth, and provide supportive assistance B Promotion of supportive assistance to single-parent families and women having difficult problems C Social connection support to persons suffering from disconnectedness or isolation
PJ 10 Society to live in harmony	Realization of a society where people can live in harmony regardless of disability, nationality, and gender <ul style="list-style-type: none"> A Realization of a society to live together with children and persons with disabilities B Promotion of multicultural coexistence C Realization of a gender-equal society

Theme IV

Kanagawa, where people can live with a sense of security

We will promote measures to ensure security of living and to prevent and mitigate disasters in response to various risks surrounding living, such as special fraud, more serious threats in cyberspace, severer and more frequent natural disasters, and an outbreak of emerging infectious disease.



PJ11

Protecting prefectural residents from threats surrounding living and economic activities

Security of living

- A Creating a community that makes it hard to commit crimes
- B Prevention of traffic accidents
- C Security of consumer life

PJ12

Disaster-resilient Kanagawa

Crisis management

- A Improving disaster management skills
- B Development of disaster-resilient communities
- C Establishment of a sustainable medical delivery system that can respond to emergencies

Theme V

Creating a basis to support Kanagawa

Amid the great changes in social environment surrounding Kanagawa, such as declining population as well as severer and more frequent natural disasters, we will promote sustainable community development as an effort to create a basis to underpin the priority measures in each theme.



PJ13

Formation of sustainable prefectural land

Urban infrastructure

- A Enhancement of transportation networks to support exchange and coordination
- B Promoting the development of vibrant, attractive, and resilient communities



Kanagawa's Strategies

In order to overcome so big challenges including coping with a super-aging society or a depopulating society, we have organized the efforts to further compositely implement the Projects, in which priority measures are dealt with in a cross-sectoral manner, as "Kanagawa's Strategies."



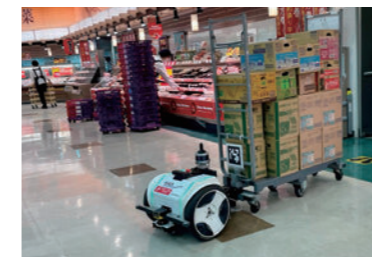
1. Promotion of Healthcare New Frontier Policy

- Improving ME-BYO
- Pursuing state-of-the-art medical treatments and technologies
- Creating a foundation for a future society



2. An era when people can live a vibrant life to 100

- Promoting health for a vibrant life
- Promoting diversified lifestyles for a fulfilling life
- Creating an environment where people can be active in their own way in the community or society



3. Society coexisting with robots

- Promoting the use of life support robots in various fields
- Support of companies for promotion of the robot industry
- Promoting common use of robots



4. Promotion of Magnet Culture

- Efforts to enhance and expand magnet culture
- Promotion of projects for a society of coexistence and co-creation
- Community revitalization through culture and art



5. Promotion of global strategy

- Creating a community of multicultural coexistence
- International expansion by utilizing Kanagawa's strengths
- Promoting the activity of global human resources

Efforts to develop communities, related to the Projects

Among programs positioned in the Projects, we will show those to be developed in communities, focusing on maintenance programs related to “urban infrastructure” and “crisis management,” according to the five community policy regions.

New Kanagawa Grand Design and SDGs

The Basic Principle of the Basic Concept, “Kanagawa - a magnet for vibrant inochi,” can be realized through promotion of comprehensive policies by connecting various fields. This concept is in line with the philosophy of the Sustainable Development Goals (SDGs), which are advocated by the United Nations and tackle a wide range of economic, social, and environmental challenges in an integrated manner.

Based on the philosophy of the SDGs, the K.P.G. will work to realize Kanagawa, where the life of each individual shines, by valuing partnerships with all stakeholders, including prefectural residents, companies, NPOs, universities, organizations, and municipalities.



The actions of each of us will lead to the future.

SDGs Future City, Kanagawa

Key measures

Key measures show a comprehensive picture of the prefecture’s policies by systematizing the measures and programs to be steadily implemented by the K.P.G., including those in the Projects.

I Children, Youth, and Education

II Health and Welfare

III Industry and Labor

IV Environment and Energy

V Society to Live in Harmony and Prefectural Residents’ Living

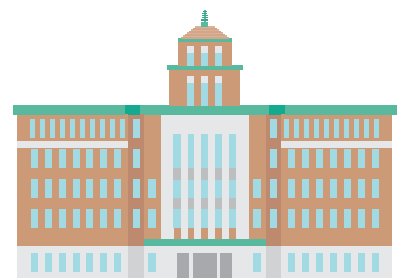
VI Crisis Management and Security of Living

VII Prefectural Land and Community Development

Promotion of the Plan

Administrative management to promote the Plan

- ① Effective and efficient promotion of measures by utilizing digital technologies
- ② Collaboration and partnerships with diverse bearers
- ③ Cooperation and coordination with municipalities in the prefecture and other prefectures
- ④ Cross-sectoral measure expansion
- ⑤ Strategic public relations



Progress management of the Plan

In order to steadily promote the Plan and manage the progress, we will conduct policy evaluation on the implementation status of the measures in the Implementation Plan, establish a “policy management cycle” to improve policy management based on the evaluation, and conduct effective and efficient policy management.